



DYNAMO



SAKA TRADING - SAL
YOUR RESOURCEFUL PARTNER

SECTOR 32 - STREET 49,
CHOUEIFAT - LEBANON

T : 05 400 008
M: 03 752 445 | 81 81 81 11

INFO@SAKA.COM.LB
WWW.SAKA.COM.LB

DYNAMO

PASSENGER & LIGHT
TRUCK TIRE CATALOG



205 / 55 R16 94V DOT

1 Tread Section Width (mm)

The first number in this series refers to the tire's section width, or the distance from sidewall edge to sidewall edge, measured in millimeters up and over the tire's tread. In this example, the tire is 205 mm wide. Generally speaking, the larger this number is the wider the tire will be.

2 Aspect Ratio (ratio of sidewall height to width)

The aspect ratio refers to the height of the sidewall which is labeled as a percentage of the section width. In this example, the sidewall height is 55% of the 205 section width. This number can be indicative of a tire's purpose. Lower numbers, like 55 or less, mean a short sidewall for improved steering response and better overall handling.

3 Internal Construction

In this example, the "R" designates this tire as a radial tire. Radial tires have layers of fabric whose cords run at right angles to the circumference of the tire and whose tread is strengthened by additional layers around the circumference making it the most common type of automotive tire.

Rim Diameter

4 The wheel (or rim) diameter specifies the size, in inches for which the tire was sized. In this example, the tire will fit a 16 inch wheel. Pay particular attention to this number if you plan on changing your wheel size.

Load Index

5 Load Index indicates the maximum load carrying capacity of the tire; the larger the number, the higher the load capacity. It is very important to only install tires with a load index that meets or exceeds your vehicle manufacturer's specification.

Speed Rating

6 The speed rating designates the maximum speed at which a properly installed and inflated tire can be driven on. In this example, the speed rating is V which means it has a speed rating of 240 km/h.

U.S. Department of Transportation (DOT) Markings

7 The DOT code is used by the Department of Transportation (DOT) to track the tire production for recall purposes. If a tire proves to be defective, this number helps keep track of where these tires ended up so buyers can be notified of the problem. This code represents the manufacturer and the plant it was manufactured at (KE) and the size (B0). At the end of the DOT code you will find a four-digit number which stands for the manufacturing date of the tire. The first two digits stand for the week; the other two for the year. For example, if your tire has "1616" listed, it was manufactured in the 16th week of 2016.

Tire Maintenance and Safety

Tire maintenance can help to improve the performance and extend the life of your tires. More importantly, taking just a few minutes a month to inspect your tires can help you to avoid tire failures. Some of the key aspects of preventative maintenance include:

1. Inflation Pressure - It's important to maintain the correct inflation pressure in your tires as under-inflation or over-inflation may lead to a tire failure. The correct inflation pressure of your tires is specified by the vehicle manufacturer and is typically shown on the vehicle door ledge or in the owner's manual.

Tires may lose air over time due to the permeability of rubber so it is important to check your tire pressure regularly, at least once a month including the spare. Ensure to check the pressure when the tires are cold (i.e. have not been driven on).

2. Loading - Do not overload your vehicle. Overloading creates excessive stress leading to heat generation and can eventually lead to a tire failure. Please check the tire placard or vehicle owner's manual for the maximum recommended load for your vehicle.

Speed Rating

The speed symbol indicates the maximum speed rating at which a tire can carry a load corresponding to its Load Index under specific service conditions.

For tires with speed symbols W and Y, "ZR" may or may not appear within the size designation. For tires with a maximum speed above 186 MPH, a "ZR" must appear in the size designation.

Examples of similar size markings, with and without service descriptions, and showing different maximum speeds are shown.

SPEED RATING AND MAX SPEED EQUIVALENT			
SPEED RATING	MAX SPEED (km/h)	SPEED RATING	MAX SPEED (km/h)
A1	5	K	110
A2	10	L	120
A3	15	M	130
A4	20	N	140
A5	25	P	150
A6	30	Q	160
A7	35	R	170
A8	40	S	180
B	50	T	190
C	60	U	200
D	65	H	210
E	70	V	240
F	80	W	270
G	90	Y	300
J	100	ZR	>240

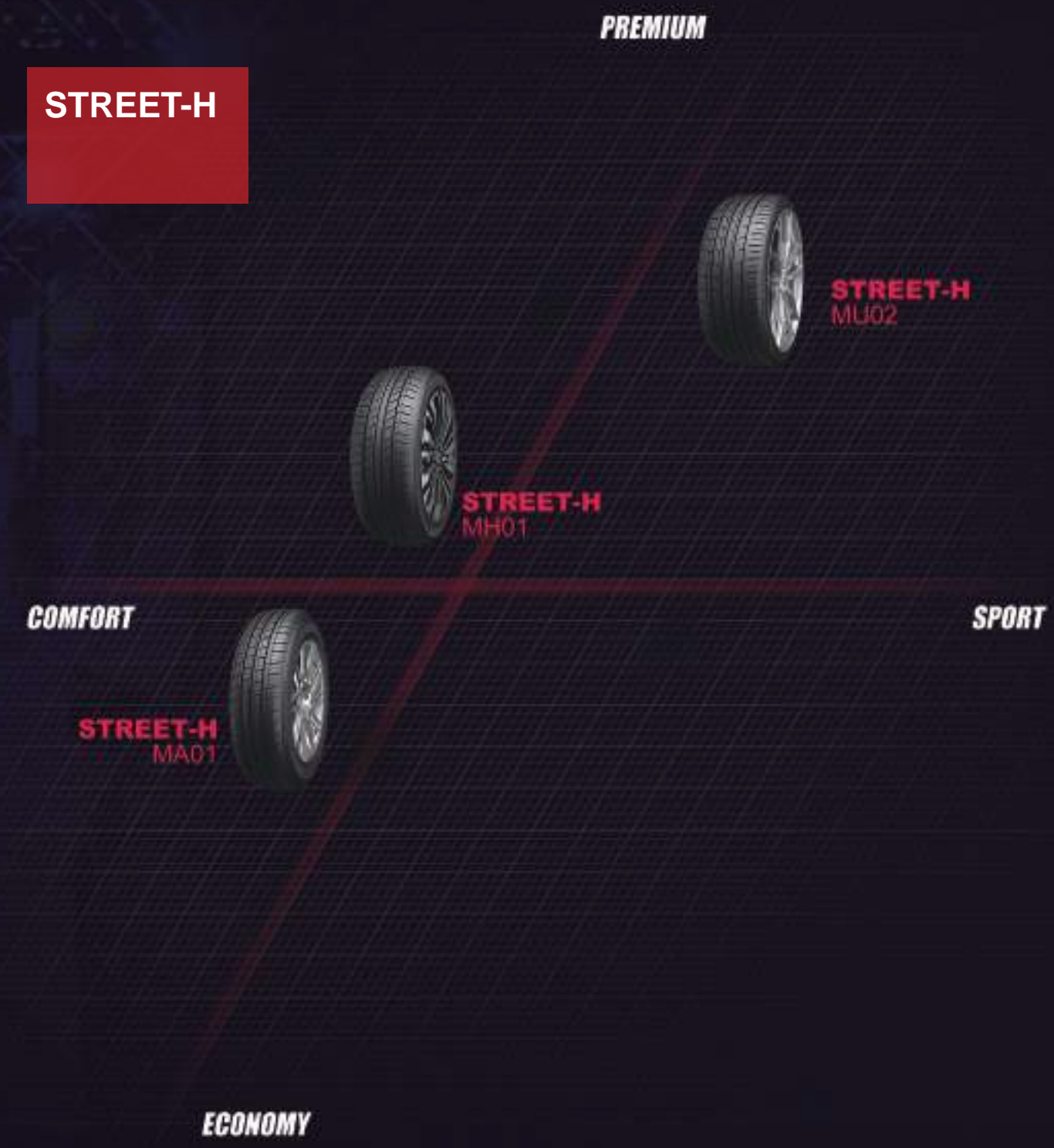


DYNAMO

11	STREET-H M4S01
13	STREET-H MH01
17	STREET-H MA01
19	STREET-H MU02
23	HISCEND-H MHT01
25	HISCEND-H MAT01
27	HISCEND-H MMT01
28	HISCEND-H MSU02
29	HISCEND-H MC01
31	HISCEND-H ML01
33	HISCEND-H MC02
35	HISCEND-H MST01
37	HISCEND-H MSU01
39	SNOW-H MWC01
41	SNOW-H MWH01
43	SNOW-H MWH02
45	SNOW-H MWH03
47	SNOW-H MWS01



STREET-H



HISCEND-H



SNOW-H

Winter tires



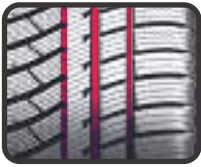
M4S01
STREET-H



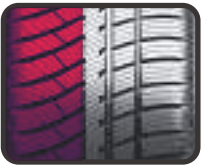
Specially designed all season Tire .



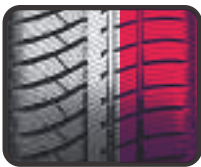
Noise Emissions
Tread pitch is designed to effectively reduce noise emissions for a quite driving experience.



All-Season Versatility
Tread and groove design ensures handling, grip, and stability for all seasons.



Inner Tread
Improved handling on wet and snowy roads while also improving grip and braking efficiency.



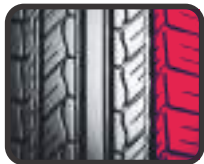
Outer Tread
Improved handling and stability on dry roads.

Rim	Size	PR	LI	SR	XL	SW	Tread Depth (mm)	Standard Rim (mm)	Section Width (mm)	Overall Diameter (mm)	UTQG	MAX LOAD (kg)	Pressure (kpa)
13	155/70R13	/	75	T	/	BSW	8.0	4.50B	157	548	300/A/A	387	300
	155/80R13	/	79	T	/	BSW	8.0	4.50B	157	578	300/A/A	437	300
14	155/65R14	/	75	T	/	BSW	8.0	4 1/2J	157	558	300/A/A	387	300
	165/60R14	/	79	H	XL	BSW	8.0	5J	170	554	300/A/A	437	340
	165/65R14	/	79	T	/	BSW	8.0	5J	170	570	300/A/A	437	300
	165/70R14	/	85	T	XL	BSW	8.0	5J	170	588	300/A/A	515	340
	175/65R14	/	82	T	/	BSW	8.5	5J	177	584	300/A/A	475	300
	175/70R14	/	84	T	/	BSW	8.5	5J	177	602	300/A/A	500	300
	175/70R14	/	88	T	XL	BSW	8.5	5J	177	602	300/A/A	560	340
	185/60R14	/	82	T	/	BSW	8.5	5 1/2J	189	578	300/A/A	475	300
	185/65R14	/	86	T	/	BSW	8.5	5 1/2J	189	596	300/A/A	530	300
	175/65R15	/	84	H	/	BSW	8.5	5J	177	609	300/A/A	500	300
15	185/55R15	/	82	H	/	BSW	8.5	6J	194	585	300/A/A	475	300
	185/60R15	/	88	H	XL	BSW	8.5	5 1/2J	189	603	300/A/A	560	340
	185/65R15	/	88	H	/	BSW	8.5	5 1/2J	189	621	300/A/A	560	300
	195/50R15	/	82	H	/	BSW	8.5	6J	201	577	300/A/A	475	300
	195/55R15	/	85	H	/	BSW	8.5	6J	201	595	300/A/A	515	300
	195/60R15	/	88	H	/	BSW	8.5	6J	201	615	300/A/A	560	300
	195/65R15	/	91	H	/	BSW	8.5	6J	201	635	300/A/A	615	300
	195/55R16	/	87	V	/	BSW	8.5	6J	201	620	300/A/A	545	300
16	205/45R16	/	87	V	XL	BSW	8.5	7J	206	590	300/A/A	545	340
	205/55R16	/	94	V	XL	BSW	8.5	6 1/2J	214	632	300/A/A	670	340
	205/60R16	/	96	V	XL	BSW	8.5	6J	209	652	300/A/A	710	340
	215/55R16	/	97	V	XL	BSW	8.5	7J	226	642	300/A/A	730	340
	215/60R16	/	99	V	XL	BSW	8.5	6 1/2J	221	664	300/A/A	775	340
	225/55R16	/	99	V	XL	BSW	8.5	7J	233	654	300/A/A	775	340
	205/50R17	/	93	V	XL	BSW	8.5	6 1/2J	214	638	300/A/A	650	340
17	225/45R17	/	94	V	XL	BSW	8.5	7 1/2J	225	634	300/A/A	670	340
	225/50R17	/	98	V	XL	BSW	8.5	7J	233	658	300/A/A	750	340

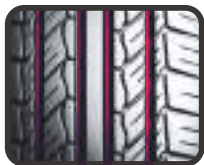
MH01
STREET-H



Excellent handling, superior comfort, high-speed stability and low running noise provide a great driving experience.



Noise Emission
The tread block pitch order and shoulder grooves effectively reduce running noise and ensure excellent performance.



Safety
The four main grooves and central rib are designed to provide excellent water drainage to improve driving performance for both wet and dry roads.



Special Tread
The tread is composed of a silicon compound formulation which lowers rolling resistance for better fuel economy. Tread pattern is designed for great handling for a safer and more comfortable driving experience.

Rim	Size	PR	LI	SR	XL	SW	Tread Depth (mm)	Standard Rim (mm)	Section Width (mm)	Overall Diameter (mm)	UTQG	MAX LOAD (kg)	Pressure (kpa)
13	165/65R13	/	77	T	/	BSW	7.6	5.00B	170	544	420/A/A	412	300
	165/70R13	/	83	T	XL	BSW	7.5	5.00B	170	562	420/A/A	487	340
	175/60R13	/	77	T	/	BSW	8.0	5.00B	177	540	420/A/A	412	300
	175/70R13	/	82	T	/	BSW	8.0	5.00B	177	576	420/A/A	475	300
	185/60R13	/	80	T	/	BSW	8.0	5.50B	189	552	420/A/A	450	300
	185/70R13	/	86	T	/	BSW	7.8	5.50B	189	590	420/A/B	530	300
14	165/60R14	/	75	H	/	BSW	8.0	5J	170	554	420/A/A	387	300
	165/70R14	/	85	T	XL	BSW	8.0	5J	170	588	420/A/A	515	340
	175/60R14	/	79	H	/	BSW	8.0	5J	177	566	420/A/A	437	300
	175/65R14	/	86	T	XL	BSW	8.0	5J	177	584	420/A/A	530	340
	175/65R14	/	82	T	/	BSW	8.0	5J	177	584	420/A/A	475	300
	175/65R14	/	86	H	XL	BSW	8.0	5J	177	584	420/A/A	530	340
	175/70R14	/	88	T	XL	BSW	8.0	5J	177	602	420/A/A	560	340
	175/70R14	/	84	T	/	BSW	8.0	5J	177	602	420/A/A	500	300
	185/60R14	/	82	H	/	BSW	8.0	5 1/2J	189	578	420/A/A	475	300
	185/65R14	/	86	H	/	BSW	8.0	5 1/2J	189	596	420/A/A	530	300
	185/70R14	/	88	H	/	BSW	8.0	5 1/2J	189	616	420/A/A	560	300
	195/60R14	/	86	H	/	BSW	8.0	6J	201	590	420/A/A	530	300
	195/65R14	/	89	H	/	BSW	8.0	6J	201	610	420/A/A	580	300
	195/70R14	/	91	T	/	BSW	8.0	6J	201	630	420/A/A	615	300
	205/60R14	/	88	T	/	BSW	8.0	6J	209	602	420/A/A	560	300
	205/70R14	/	98	T	XL	BSW	8.0	6J	209	644	420/A/A	750	340
15	175/65R15	/	84	H	/	BSW	8.0	5J	177	609	420/A/A	500	300
	185/55R15	/	82	V	/	BSW	8.0	6J	194	585	420/A/A	475	300
	185/60R15	/	88	H	XL	BSW	8.0	5 1/2J	189	603	420/A/A	560	340
	185/60R15	/	84	H	/	BSW	8.0	5 1/2J	189	603	420/A/A	500	300
	185/65R15	/	92	H	XL	BSW	8.0	5 1/2J	189	621	420/A/A	630	340
	185/65R15	/	88	H	/	BSW	8.0	5 1/2J	189	621	420/A/A	560	300
	195/50R15	/	82	V	/	BSW	8.0	6J	201	577	420/A/A	475	300
	195/55R15	/	85	V	/	BSW	8.0	6J	201	595	420/A/A	515	300
	195/60R15	/	88	V	/	BSW	8.0	6J	201	615	420/A/A	560	300
	195/65R15	/	91	H	/	BSW	8.0	6J	201	635	420/A/A	615	300

XL: Extra Load LI: Load Index SS: Speed Symbol UTQG: Uniform Tire Quality Grade BSW: Black Sidewall



MH01
STREET-H

Rim	Size	PR	LI	SR	XL	SW	Tread Depth (mm)	Standard Rim (mm)	Section Width (mm)	Overall Diameter (mm)	UTQG	MAX LOAD (kg)	Pressure (kpa)
15	195/65R15	/	91	V	/	BSW	8.0	6J	201	635	420/A/A	615	300
	195/65R15	/	95	T	XL	BSW	8.0	6J	201	635	420/A/A	690	340
	205/60R15	/	95	H	XL	BSW	8.0	6J	209	627	420/A/A	690	340
	205/60R15	/	91	H	/	BSW	8.0	6J	209	627	420/A/A	615	300
	205/65R15	/	94	V	/	BSW	8.0	6J	209	647	420/A/A	670	300
	205/70R15	/	96	T	/	BSW	8.0	6J	209	669	420/A/B	710	300
	215/60R15	/	94	H	/	BSW	8.0	6 1/2J	221	639	420/A/A	670	300
	215/65R15	/	96	V	/	BSW	8.8	6 1/2J	221	661	420/A/A	710	300
	215/70R15	/	98	H	/	BSW	8.8	6 1/2J	221	683	420/A/A	750	300
	225/60R15	/	96	V	/	BSW	8.0	6 1/2J	228	651	420/A/A	710	300
16	195/50R16	/	88	V	XL	BSW	8.0	6J	201	602	420/A/A	560	340
	195/60R16	/	89	V	/	BSW	8.4	6J	201	640	420/A/A	580	300
	205/50R16	/	87	V	/	BSW	8.0	6 1/2J	214	612	420/A/A	545	300
	205/55R16	/	94	V	XL	BSW	8.0	6 1/2J	214	632	420/A/A	670	340
	205/55R16	/	91	V	/	BSW	8.0	6 1/2J	214	632	420/A/A	615	300
	205/60R16	/	92	V	/	BSW	8.0	6J	209	652	420/A/A	630	300
	205/60R16	/	96	V	XL	BSW	8.0	6J	209	652	420/A/A	710	340
	205/65R16	/	95	H	/	BSW	8.0	6J	209	672	420/A/A	690	300
	215/55R16	/	97	H	XL	BSW	8.0	7J	226	642	420/A/A	730	340
	215/60R16	/	95	V	/	BSW	8.0	6 1/2J	221	664	420/A/A	690	300
	215/65R16	/	98	H	/	BSW	8.0	6 1/2J	221	686	420/A/A	750	300
	225/50R16	/	92	V	/	BSW	8.0	7J	233	632	420/A/A	630	300
	225/60R16	/	98	H	/	BSW	8.0	6 1/2J	228	676	420/A/A	750	300
	235/65R16	/	103	H	/	BSW	8.0	7J	240	712	420/A/B	875	300
17	205/50R17	/	89	V	/	BSW	8.0	6 1/2J	214	638	420/A/A	580	300
	215/45R17	/	91	W	XL	BSW	8.0	7J	213	626	420/A/A	615	340
	215/50R17	/	91	V	/	BSW	8.0	7J	226	648	420/A/A	615	300
	215/55R17	/	94	V	/	BSW	8.0	7J	226	668	420/A/A	670	300
	215/60R17	/	96	H	/	BSW	8.0	6 1/2J	221	690	420/A/A	710	300
	215/65R17	/	99	T	/	BSW	8.0	6 1/2J	221	712	420/A/B	775	300
	225/45R17	/	94	W	XL	BSW	8.0	7 1/2J	225	634	420/A/A	670	340

Rim	Size	PR	LI	SR	XL	SW	Tread Depth (mm)	Standard Rim (mm)	Section Width (mm)	Overall Diameter (mm)	UTQG	MAX LOAD (kg)	Pressure (kpa)
17	225/50R17	/	94	V	/	BSW	8.0	7J	233	658	420/A/A	670	300
	225/55R17	/	97	W	/	BSW	8.0	7J	233	680	420/A/A	730	300
	225/60R17	/	99	H	/	BSW	8.0	6 1/2J	228	702	420/A/A	775	300
	235/45R17	/	97	W	XL	BSW	8.0	8J	236	644	420/A/A	730	340
	235/60R17	/	102	T	/	BSW	8.0	7J	240	714	420/A/A	850	300
18	235/40R18	/	95	W	XL	BSW	8.0	8 1/2J	241	645	420/A/A	690	340
	235/40R18	/	91	W	/	BSW	8.0	8 1/2J	241	645	420/A/A	615	300
	235/55R18	/	100	V	/	BSW	8.0	7 1/2J	245	715	420/A/A	800	300
	235/60R18	/	103	H	/	BSW	8.0	7J	240	739	420/A/A	875	300
	235/60R18	/	107	V	XL	BSW	8.0	7J	240	739	420/A/A	975	340

MA01
STREET-H



Rim	Size	PR	LI	SR	XL	SW	Tread Depth (mm)	Standard Rim (mm)	Section Width (mm)	Overall Diameter (mm)	UTQG	MAX LOAD (kg)	Pressure (kpa)
12	165/70R12	/	77	T	/	RWL	9.0	5.00B	170	537	620/A/A	412	300
	165/70R13	/	79	H	/	BSW	7.5	5.00B	170	562	500/A/A	437	300
13	165/70R13LT	8PR	94/92	S	/	BSW	7.5	5.00B	170	562	500/A/A	670/630	450
	185/60R14	/	82	H	/	BSW	9.0	5 1/2J	189	578	500/A/A	475	300
	185/65R14	/	86	H	/	BSW	9.0	5 1/2J	189	596	500/A/A	530	300
	195/60R14	/	86	H	/	BSW	9.0	6J	201	590	500/A/A	530	300
14	185/65R15	/	88	H	/	BSW	9.0	5 1/2J	189	621	500/A/A	560	300
	195/50R15	/	82	V	/	BSW	9.0	6J	201	577	500/A/A	475	300
	195/55R15	/	85	V	/	BSW	9.0	6J	201	595	500/A/A	515	300
	195/60R15	/	88	V	/	BSW	9.0	6J	201	615	500/A/A	560	300
	195/65R15	/	95	H	XL	BSW	9.0	6J	201	635	500/A/A	690	340
	205/60R15	/	91	V	/	BSW	8.5	6J	209	627	500/A/A	615	300
15	205/55R16	/	94	V	XL	BSW	9.0	6 1/2J	214	632	500/A/A	670	340



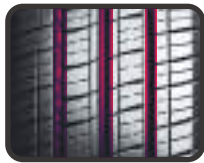
With a long service life and low rolling resistance MA01 is the perfect product for taxis and urban households.



Fuel Economy
The silicon tread formulation and reinforced shoulder design effectively reduce rolling resistance for improved fuel economy.



Long Tread Life
A wide tread surface, deepened grooves, and scratch resistant shoulder improve abrasion resistant for a longer tread life.



Water Drainage
The wide main grooves effectively drain water for a safe ride on wet roads.

MU02
STREET-H



MU02's tread formulation is specially designed to ensure excellent rolling resistance as well as a stronger apex to prevent damage to the bead.



Wet Performance
The tread's four main grooves efficiently drain water for improved safety in wet weather conditions.



All-Season Performance
The inner tread elements provide stronger grip on both wet and dry roads.



Shoulder Design
The external shoulder blocks provide ideal rigidity and excellent handling.

Rim	Size	PR	LI	SR	XL	SW	Tread Depth (mm)	Standard Rim (mm)	Section Width (mm)	Overall Diameter (mm)	UTQG	MAX LOAD (kg)	Pressure (kpa)
16	195/55R16	/	91	V	XL	BSW	8.0	6J	201	620	300/AA/A	615	340
	205/45ZR16	/	87	W	XL	BSW	8.2	7J	206	590	300/AA/A	545	340
	205/50ZR16	/	87	W	/	BSW	8.2	6 1/2J	214	612	300/AA/A	545	300
	205/55ZR16	/	94	W	XL	BSW	8.2	6 1/2J	214	632	300/AA/A	670	340
	205/60R16	/	92	V	/	BSW	8.2	6J	209	652	300/AA/A	630	300
	205/65R16	/	95	V	/	BSW	8.2	6J	209	672	300/AA/A	690	300
	215/55ZR16	/	97	W	XL	BSW	8.2	7J	226	642	300/AA/A	730	340
	225/55ZR16	/	99	W	XL	BSW	8.2	7J	233	654	300/AA/A	775	340
	225/60R16	/	98	V	/	BSW	8.2	6 1/2J	228	676	300/AA/A	750	300
	235/60R16	/	100	V	/	BSW	8.2	7J	240	688	300/AA/A	800	300
17	205/40ZR17	/	84	W	XL	BSW	8.2	7 1/2J	212	596	300/AA/A	500	340
	205/45ZR17	/	88	W	XL	BSW	8.0	7J	206	616	300/AA/A	560	340
	205/50ZR17	/	93	W	XL	BSW	8.0	6 1/2J	214	638	400/AA/A	650	340
	215/40ZR17	/	87	W	XL	BSW	8.2	7 1/2J	218	604	300/AA/A	545	340
	215/45ZR17	/	91	W	XL	BSW	8.2	7J	213	626	300/AA/A	615	340
	215/50ZR17	/	95	W	XL	BSW	8.2	7J	226	648	300/AA/A	690	340
	215/55ZR17	/	94	W	/	BSW	8.2	7J	226	668	300/AA/A	670	300
	225/45ZR17	/	94	W	XL	BSW	8.2	7 1/2J	225	634	300/AA/A	670	340
	225/50ZR17	/	98	W	XL	BSW	8.2	7J	233	658	300/AA/A	750	340
	225/55ZR17	/	101	W	XL	BSW	8.2	7J	233	680	300/AA/A	825	340
	235/45ZR17	/	97	W	XL	BSW	8.2	8J	236	644	300/AA/A	730	340
	235/50ZR17	/	100	W	XL	BSW	8.0	7 1/2J	245	668	300/AA/A	800	340
	235/55ZR17	/	103	W	XL	BSW	8.0	7 1/2J	245	690	300/AA/A	875	340
	245/40ZR17	/	95	W	XL	BSW	8.2	8 1/2J	248	628	300/AA/A	690	340
	245/45ZR17	/	99	W	XL	BSW	8.0	8J	243	652	300/AA/A	775	340
18	205/40ZR18	/	82	W	/	BSW	8.2	7 1/2J	212	621	300/AA/A	475	300
	215/35ZR18	/	84	Y	XL	BSW	8.0	7 1/2J	218	607	300/AA/A	500	340
	225/40ZR18	/	92	W	XL	BSW	8.2	8J	230	637	300/AA/A	630	340
	225/45ZR18	/	95	Y	XL	BSW	8.0	7 1/2J	225	659	300/AA/A	690	340
	235/40ZR18	/	95	W	XL	BSW	8.2	8 1/2J	241	645	300/AA/A	690	340

MU02
STREET-H

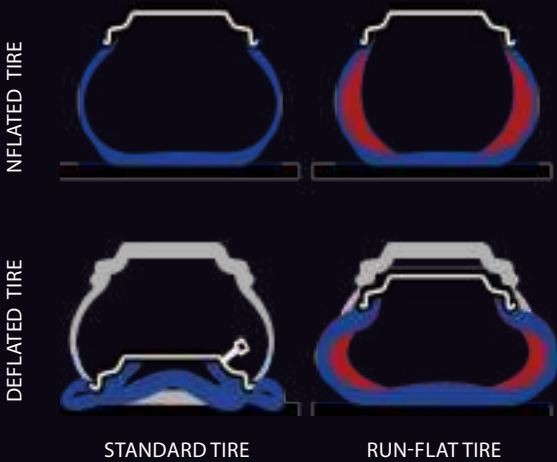


Rim	Size	PR	LI	SR	XL	SW	Tread Depth (mm)	Standard Rim (mm)	Section Width (mm)	Overall Diameter (mm)	UTQG	MAX LOAD (kg)	Pressure (kpa)
18	235/45ZR18	/	98	Y	XL	BSW	8.0	8J	236	669	300/AA/A	750	340
	235/50ZR18	/	101	W	XL	BSW	8.0	7 1/2J	245	693	300/AA/A	825	340
	245/40ZR18	/	97	Y	XL	BSW	8.2	8 1/2J	248	653	300/AA/A	730	340
	245/45ZR18	/	100	W	XL	BSW	8.2	8J	243	677	300/AA/A	800	340
	255/35ZR18	/	94	Y	XL	BSW	8.0	9J	260	635	300/AA/A	670	340
19	225/35ZR19	/	88	Y	XL	BSW	8.0	8J	230	641	300/AA/A	560	340
	225/40ZR19	/	93	Y	XL	BSW	8.0	8J	230	663	300/AA/A	650	340
	235/35ZR19	/	91	Y	XL	BSW	8.0	8 1/2J	241	647	300/AA/A	615	340
	235/45ZR19	/	99	W	XL	BSW	8.0	8J	236	695	300/AA/A	775	340
	245/35ZR19	/	93	Y	XL	BSW	8.0	8 1/2J	248	655	300/AA/A	650	340
	245/40ZR19	/	98	Y	XL	BSW	8.0	8 1/2J	248	679	300/AA/A	750	340
	245/45ZR19	/	102	Y	XL	BSW	8.0	8J	243	703	300/AA/A	850	340
	255/35ZR19	/	96	Y	XL	BSW	8.0	9J	260	661	300/AA/A	710	340
	255/50ZR19	/	107	Y	XL	BSW	8.0	8J	265	739	300/AA/A	975	340
	265/30ZR19	/	93	Y	XL	BSW	8.0	9 1/2J	271	643	300/AA/A	650	340
	275/30ZR19	/	96	Y	XL	BSW	8.0	9 1/2J	278	649	300/AA/A	710	340
	275/35ZR19	/	100	Y	XL	BSW	8.0	9 1/2J	278	675	300/AA/A	800	340
	275/45ZR19	/	108	Y	XL	BSW	8.0	9J	273	731	300/AA/A	1000	340
	285/45ZR19	/	111	Y	XL	BSW	8.0	9 1/2J	285	739	300/AA/A	1090	340
20	225/35ZR20	/	90	Y	XL	BSW	8.0	8J	230	666	300/AA/A	600	340
	245/30ZR20	/	90	Y	XL	BSW	8.0	8 1/2J	248	656	300/AA/A	600	340
	245/35ZR20	/	95	Y	XL	BSW	8.0	8 1/2J	248	680	300/AA/A	690	340
	245/45ZR20	/	103	Y	XL	BSW	8.0	8J	243	728	300/AA/A	875	340
	255/45ZR20	/	105	Y	XL	BSW	8.0	8 1/2J	255	738	300/AA/A	925	340
	275/30ZR20	/	97	Y	XL	BSW	8.0	9 1/2J	278	674	300/AA/A	730	340
	275/40ZR20	/	106	Y	XL	BSW	8.0	9 1/2J	278	728	300/AA/A	950	340
	275/45ZR20	/	110	Y	XL	BSW	8.0	9J	273	756	300/AA/A	1060	340
21	285/35ZR21	/	105	Y	XL	BSW	8.0	10J	290	733	300/AA/A	925	340
	295/35ZR21	/	107	Y	XL	BSW	8.0	10 1/2J	301	739	300/AA/A	975	340
	325/30ZR21	/	108	Y	XL	BSW	8.0	11 1/2J	331	729	300/AA/A	1000	340

MU02 RUN-FLAT

RFT Product Features:

- 1. Greater safety and the driver will not be delayed or stranded on remote highways because of a flat tire.
- 2. Avoid accidents caused by the loss of control from punctures or air leaks: when the tire is flat, even if all the air pressure has leaked from the tire, the vehicle will continue to drive at normal speeds without having to be replaced immediately.
- 3. Even when your tire begins leaking air you can drive to your local tire dealer to have it repaired. RFT technology also means there is no need to carry a spare which helps increase storage space within the vehicle.

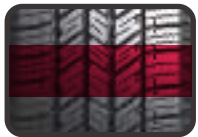


Rim	Size	PR	LI	SR	XL	SW	Tread Depth (mm)	Standard Rim (mm)	Section Width (mm)	Overall Diameter (mm)	UTQG	MAX LOAD (kg)	Pressure (kpa)
16	195/55RF16	/	91	V	XL	BSW	8.0	6J	201	620	300/A/A	615	340
	205/55ZRF16	/	94	W	XL	BSW	8.2	6 1/2J	214	632	300/AA/A	670	340
	225/55ZRF16	/	99	W	XL	BSW	8.2	7J	233	654	300/A/A	775	340
17	205/50ZRF17	/	93	W	XL	BSW	8.0	6 1/2J	214	638	400/A/A	650	340
	225/45ZRF17	/	94	W	XL	BSW	8.2	7 1/2J	225	634	300/AA/A	670	340
	225/50ZRF17	/	98	W	XL	BSW	8.2	7J	233	658	300/A/A	750	340
	225/55ZRF17	/	101	W	XL	BSW	8.2	7J	233	680	300/AA/A	825	340
18	225/40ZRF18	/	92	W	XL	BSW	8.2	8J	230	637	300/A/A	630	340
	225/45ZRF18	/	95	W	XL	BSW	8.0	7 1/2J	225	659	300/A/A	690	340
	245/40ZRF18	/	97	W	XL	BSW	8.2	8 1/2J	248	653	300/A/A	730	340
	245/45ZRF18	/	100	W	XL	BSW	8.2	8J	243	677	300/A/A	800	340
	245/50ZRF18	/	100	Y	/	BSW	8.2	7 1/2J	253	703	300/A/A	800	300
19	235/45ZRF19	/	99	W	XL	BSW	7.5	8J	236	695	300/A/A	775	340
	245/45ZRF19	/	102	W	XL	BSW	8.0	8J	243	703	300/A/A	850	340
	255/50RF19	/	103	V	/	BSW	8.0	8J	265	739	300/A/A	875	300

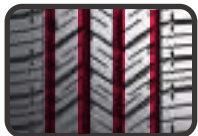
MHT01
HISCEND-H



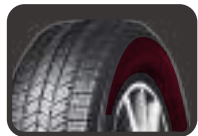
High performance SUV and light truck tire with excellent durability and handling efficiency.



Tread Formula
Special tread formula improves abrasion resistance and grip for better handling.



Safety
Wide tread grooves and small cut block grooves ensure a safe ride by effectively draining water for better traction.



Sidewall Design
The sidewall structure and ladder-like grooves on the shoulder allow the tire to conquer any challenge on both paved and non-paved roads.

Rim	Size	PR	LI	SR	XL	SW	Tread Depth (mm)	Standard Rim (mm)	Section Width (mm)	Overall Diameter (mm)	UTQG	MAX LOAD (kg)	Pressure (kpa)
15	205/70R15	/	96	S	/	BSW	9.8	6J	209	669	700/A/B	710	300
	215/75R15	/	100	T	/	BSW	8.8	6J	216	703	700/A/B	800	300
	225/70R15	/	100	S	/	BSW	9.0	6 1/2J	228	697	700/A/B	800	300
	235/75R15	/	105	S	/	BSW	9.8	6 1/2J	235	733	700/A/B	925	300
16	215/65R16	/	98	T	/	BSW	9.8	6 1/2J	221	686	700/A/B	750	300
	215/70R16	/	100	H	/	BSW	9.0	6 1/2J	221	708	700/A/B	800	300
	225/70R16	/	103	S	/	BSW	9.8	6 1/2J	228	722	700/A/B	875	300
	225/75R16	/	104	S	/	BSW	8.8	6J	223	744	700/A/B	900	300
	235/70R16	/	106	H	/	BSW	8.8	7J	240	736	700/A/B	950	300
	245/70R16	/	107	S	/	BSW	9.8	7J	248	750	700/A/B	975	300
	245/75R16	/	111	T	/	BSW	8.8	7J	248	774	700/A/B	1090	300
	255/70R16	/	111	T	/	BSW	8.8	7 1/2J	260	764	700/A/B	1090	300
	265/70R16	/	112	T	/	BSW	8.8	8J	272	778	700/A/B	1120	300
	265/75R16	/	116	T	/	BSW	8.8	7 1/2J	267	804	700/A/B	1250	300
	LT225/75R16	10PR	115/112	S	/	BSW	10.5	6J	223	744	/	1215/1120	550
	LT235/85R16	10PR	120/116	S	/	BSW	10.5	6 1/2J	235	806	/	1400/1250	550
	LT245/75R16	10PR	120/116	Q	/	BSW	10.5	7J	248	774	/	1400/1250	550
	LT265/75R16	10PR	123/120	Q	/	BSW	10.5	7 1/2J	267	804	/	1550/1400	550
17	225/60R17	/	99	H	/	BSW	9.0	6 1/2J	228	702	700/A/A	775	300
	225/65R17	/	102	T	/	BSW	9.8	6 1/2J	228	724	700/A/B	850	300
	235/65R17	/	104	T	/	BSW	9.8	7J	240	738	700/A/B	900	300
	235/75R17	/	109	S	/	BSW	8.8	6 1/2J	235	784	700/A/B	1030	300
	245/65R17	/	107	H	/	BSW	8.8	7J	248	750	700/A/B	975	300
	245/70R17	/	110	T	/	BSW	8.8	7J	248	776	700/A/B	1060	300
	265/65R17	/	112	T	/	BSW	8.8	8J	272	776	700/A/B	1120	300
	265/70R17	/	115	T	/	BSW	8.8	8J	272	804	700/A/B	1215	300
	LT235/80R17	10PR	120/117	R	/	BSW	10.5	6 1/2J	235	808	/	1400/1285	550
	LT245/70R17	10PR	119/116	R	/	BSW	10.5	7J	248	776	/	1360/1250	550
18	235/55R18	/	100	V	/	BSW	8.0	7 1/2J	245	715	700/A/A	800	300
	245/60R18	/	105	H	/	BSW	8.8	7J	248	751	700/A/B	925	300
	255/70R18	/	113	T	/	BSW	8.8	7 1/2J	260	815	700/A/B	1150	300
	265/60R18	/	110	H	/	BSW	8.8	8J	272	775	700/A/B	1060	300
	275/65R18	/	116	T	/	BSW	8.8	8J	279	815	700/A/B	1250	300
20	275/45R20	/	110	H	XL	BSW	8.0	9J	273	756	700/A/A	1060	340
	275/55R20	/	113	H	/	BSW	8.0	8 1/2J	284	810	700/A/A	1150	300
	275/60R20	/	115	T	/	BSW	8.8	8J	279	838	700/A/B	1215	300

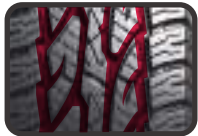
MAT01
HISCEND-H



An all-terrain off-road tire that suitable for various tyes of pickup trucks and SUVs, boasting strong off-road performance while also offering great on-road handling and driving comfort.



Tread Formula
The tread compound is specially designed to improve grip and handling on wet and dry surfaces, while also improving tread life.



Noise Emission
Unique pattern design enhances driving stability and effectively reduces noise for a greater driving experience.



Sidewall Design
The sidewall is designed to withstand scratches and bumps common in off-road applications.



Rim	Size	PR	LI	SR	XL	SW	Tread Depth (mm)	Standard Rim (mm)	Section Width (mm)	Overall Diameter (mm)	UTQG	MAX LOAD (kg)	Pressure (kpa)
15	235/75R15	/	109	S	XL	OWL	8.8	6 1/2J	235	733	700/A/B	1030	340
	31×10.50R15LT	6PR	109	S	/	OWL	13.0	8 1/2J	268	775	/	1030	350
	LT215/75R15	6PR	100/97	S	/	OWL	12.0	6J	216	703	/	800/730	350
	LT225/75R15	6PR	102/99	S	/	OWL	12.0	6J	223	719	/	850/775	350
16	LT235/75R15	6PR	104/101	S	/	OWL	12.0	6 1/2J	235	733	/	900/825	350
	215/70R16	/	100	S	/	OWL	8.8	6 1/2J	221	708	700/A/B	800	300
	235/70R16	/	106	T	/	OWL	8.8	7J	240	736	700/A/B	950	300
	245/70R16	/	107	S	/	OWL	8.8	7J	248	750	700/A/B	975	300
	255/70R16	/	111	S	/	OWL	8.8	7 1/2J	260	764	700/A/B	1090	300
	265/70R16	/	112	T	/	OWL	8.8	8J	272	778	700/A/B	1120	300
	LT225/75R16	10PR	115/112	S	/	OWL	13.0	6J	223	744	/	1215/1120	550
	LT235/70R16	6PR	104/101	T	/	OWL	12.0	7J	240	736	/	900/825	350
	LT235/85R16	10PR	120/116	S	/	OWL	13.0	6 1/2J	235	806	/	1400/1250	550
	LT245/70R16	6PR	106/103	T	/	OWL	12.0	7J	248	750	/	950/875	350
	LT245/75R16	10PR	120/116	Q	/	OWL	13.0	7J	248	774	/	1400/1250	550
	LT265/70R16	8PR	117/114	S	/	OWL	13.0	8J	272	778	/	1285/1180	450
17	LT265/75R16	10PR	123/120	Q	/	OWL	13.0	7 1/2J	267	804	/	1550/1400	550
	LT285/75R16	10PR	126/123	R	/	OWL	10.5	8J	286	834	/	1700/1550	550
	225/65R17	/	102	T	/	OWL	8.8	6 1/2J	228	724	700/A/B	850	300
	235/65R17	/	104	T	/	OWL	8.8	7J	240	738	700/A/B	900	300
	245/65R17	/	107	T	/	OWL	8.8	7J	248	750	700/A/B	975	300
	245/70R17	/	110	H	/	OWL	8.8	7J	248	776	700/A/B	1060	300
	265/70R17	/	115	T	/	OWL	10.5	8J	272	804	700/A/B	1215	300
	285/65R17	/	116	H	/	OWL	8.8	8 1/2J	292	802	700/A/B	1250	300
	LT235/80R17	10PR	120/117	R	/	OWL	10.5	6 1/2J	235	808	/	1400/1285	550
	LT245/70R17	10PR	119/116	R	/	OWL	10.5	7J	248	776	/	1360/1250	550
18	LT245/75R17	10PR	121/118	S	/	OWL	10.5	7J	248	800	/	1450/1320	550
	LT265/65R17	10PR	120/117	R	/	OWL	10.5	8J	272	776	/	1400/1285	550
	LT265/70R17	10PR	121/118	Q	/	OWL	10.5	8J	272	804	/	1450/1320	550
	LT285/70R17	10PR	121/118	S	/	OWL	10.5	8 1/2J	292	832	/	1450/1320	550
	245/60R18	/	105	T	/	OWL	8.8	7J	248	751	700/A/B	925	300
20	255/65R18	/	111	S	/	OWL	8.8	7 1/2J	260	789	700/A/B	1090	300
	265/60R18	/	110	T	/	OWL	8.8	8J	272	775	700/A/B	1060	300
	275/65R18	/	116	T	/	OWL	8.8	8J	279	815	700/A/B	1250	300
	LT275/65R18	10PR	123/120	S	/	OWL	10.5	8J	279	815	/	1550/1400	550
	265/50R20	/	111	T	XL	OWL	8.8	8 1/2J	277	774	700/A/A	1090	340
	275/55R20	/	117	H	XL	OWL	8.0	8 1/2J	284	810	700/A/A	1285	340
	LT275/65R20	10PR	126/123	S	/	OWL	10.5	8J	279	866	/	1700/1550	550

MMT01
HISCEND-H



The HM01 is specially designed for cross-country enthusiasts.



Strengthened Carcass
The three ply carcass makes this tire extremely strong and capable of handling strong impacts.



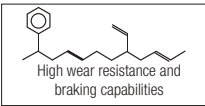
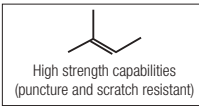
Shoulder Grooves
Open shoulder design with enlarged and deepened grooves allow for easier expulsion of mud whether traveling at low or high speeds. These changes effectively improve the tire's self-cleaning performance and grip capabilities when traveling on rugged and rocky roads.



Sidewall Design
The shield-like design extending up from the sidewall improves traction and further protects the sidewall from damage.



Shoulder Blocks
Shoulder grooves have been widened and deepened to effectively increase the tire's self-cleaning capabilities and offer improved grip on rugged and rocky.



Uses a specialized rubber compound to create a more balanced tire with strong grip.

Rim	Size	PR	LI	SR	XL	SW	Tread Depth (mm)	Standard Rim (mm)	Section Width (mm)	Overall Diameter (mm)	UTQG	MAX LOAD (kg)	Pressure (kpa)
15	30×9.50R15LT	6PR	104	Q	/	OWL	15.3	7 1/2J	240	756	/	900	350
	31×10.50R15LT	6PR	109	Q	/	OWL	15.3	8 1/2J	268	781	/	1030	350
	33×12.50R15LT	6PR	108	Q	/	OWL	15.3	10J	318	832	/	1000	250
	35×12.50R15LT	6PR	113	Q	/	OWL	15.3	10J	318	883	/	1150	250
	LT235/75R15	6PR	104/101	Q	/	OWL	15.3	6 1/2J	235	739	/	900/825	350
16	LT235/85R16	10PR	120/116	Q	/	OWL	15.3	6 1/2J	235	812	/	1380/1260	550
	LT245/75R16	10PR	120/116	Q	/	OWL	15.3	7J	248	780	/	1380/1260	550
	LT265/75R16	10PR	123/120	Q	/	OWL	15.3	7 1/2J	267	810	/	1550/1400	550
17	33×12.50R17LT	8PR	114	Q	/	OWL	16.3	10J	318	832	/	1180	350
	35×12.50R17LT	10PR	121	Q	/	OWL	16.3	10J	318	883	/	1450	450
	LT265/70R17	10PR	121/118	Q	/	OWL	15.5	8J	272	810	/	1450/1320	550
18	LT285/70R17	10PR	121/118	Q	/	OWL	15.5	8 1/2J	292	838	/	1450/1320	550
	33×12.50R18LT	10PR	118	Q	/	BSW	16.3	10J	318	832	/	1320	450
	35×12.50R18LT	10PR	123	K	/	BSW	16.7	10J	318	883	/	1550	450
20	33×12.50R20LT	10PR	114	Q	/	BSW	16.3	10J	318	832	/	1180	450
	35×12.50R20LT	10PR	121	Q	/	BSW	16.3	10J	318	883	/	1450	450
	LT305/55R20	10PR	121/118	Q	/	BSW	16.3	9 1/2J	316	850	/	1450/1320	450

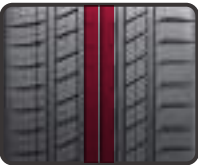


MSU02 HISCEND-H

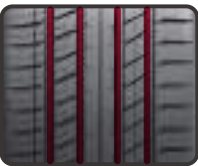
Rim	Size	PR	LI	SR	XL	SW	Tread Depth (mm)	Standard Rim (mm)	Section Width (mm)	Overall Diameter (mm)	UTQG	MAX LOAD (kg)	Pressure (kpa)
17	255/60R17	/	106	H	/	BSW	8.5	7 1/2J	260	738	500/A/A	950	300
	225/60R18	/	100	V	/	BSW	8.5	6 1/2J	228	727	500/A/A	800	300
18	235/50R18	/	97	V	/	BSW	8.0	7 1/2J	245	693	280/AA/A	730	300
	235/50R19	/	103	W	XL	BSW	8.5	7 1/2J	245	719	500/A/A	875	340
19	235/55R19	/	101	W	/	BSW	8.5	7 1/2J	245	741	500/A/A	825	300
	245/55R19	/	103	V	/	BSW	8.0	7 1/2J	253	753	280/AA/A	875	300
22	305/40R22	/	114	W	XL	BSW	8.0	11J	313	803	280/AA/A	1180	340



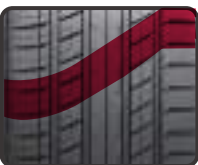
A UHP sports SUV product with an offset lateral arrangement of pattern blocks and fine groove design that effectively reduce noise and improve driving comfort.



Safety
The wide center rib design offers great traction when accelerating and braking for a safe driving experience.



Wet Performance
Grooves and sipes improve grip and handling on wet surfaces while also reducing rolling resistance for improved fuel economy.



Driving Comfort
An optimized pitch and sipe pattern arrangement effectively reduces noise for a more comfortable ride.

MSU02 RUN-FLAT

RFT Product Features:

1. Greater safety and the driver will not be delayed or stranded on remote highways because of a flat tire.
2. Avoid accidents caused by the loss of control from punctures or air leaks: when the tire is flat, even if all the air pressure has leaked from the tire, the vehicle will continue to drive at normal speeds without having to be replaced immediately.
3. Even when your tire begins leaking air you can drive to your local tire dealer to have it repaired. RFT technology also means there is no need to carry a spare which helps increase storage space within the vehicle.



Rim	Size	PR	LI	SR	XL	SW	Tread Depth (mm)	Standard Rim (mm)	Section Width (mm)	Overall Diameter (mm)	UTQG	MAX LOAD (kg)	Pressure (kpa)
18	235/50RF18	/	97	V	/	BSW	8.0	7 1/2J	245	693	280/A/A	730	300
	255/55RF18	/	105	H	/	BSW	8.0	8J	265	737	280/A/A	925	300



MC01 HISCEND-H

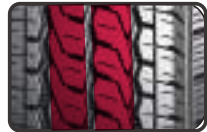


WEAR RESISTANCEHANDINGPUNCTURE RESISTANTRESILIENT

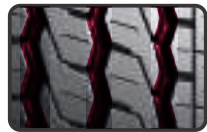
The MC01 is specially designed to provide excellent performance on wet roads and offers increased load bearing capabilities for light truck vehicles.



Commerical Utilization
The applied tread compounds and optimized pattern design provide great load bearing capabilities.



Tread Life
The unique tread compounds increase the Tire's wear resistance and deep grooves provide a longer service life.



Wet Performance
Wide, zigzagged main grooves effectively siphon water for excellent driving performance on wet roads.

Rim	Size	PR	LI	SR	XL	SW	Tread Depth (mm)	Standard Rim (mm)	Section Width (mm)	Overall Diameter (mm)	UTQG	MAX LOAD (kg)	Pressure (kpa)
14	175/70R14C	6PR	95/93	R		BSW	8.0	5J	177	602	/	690/650	375
	185R14C	8PR	102/100	Q		BSW	10.5	5 1/2J	188	650	/	850/800	450
	195R14C	8PR	106/104	Q		BSW	9.0	5 1/2J	198	666	/	950/900	450
15	185R15C	8PR	103/102	R		BSW	10.5	5 1/2J	188	674	/	875/850	450
	195R15C	8PR	106/104	R		BSW	10.5	5 1/2J	198	690	/	950/900	450



ML01 HISCEND-H

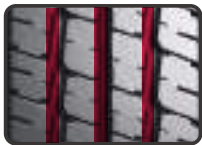


HANDINGPUNCTURE RESISTANTRESILIENTWEAR RESISTANCE

Long-running tire with flexible handling designed specifically for light trucks.



Carrying Capacity
This tire is designed with a reinforced carcass to improve its load bearing capability.



Wet Performance
Three main grooves effectively siphon water to improve grip on wet roads.



Tread Life
The tread composition and pattern design is optimized to improve wear resistance for a longer service life.

Rim	Size	PR	LI	SR	XL	SW	Tread Depth (mm)	Standard Rim (mm)	Section Width (mm)	Overall Diameter (mm)	UTQG	MAX LOAD (kg)	Pressure (kpa)
15	6.50R15LT	10PR	106/101	N		BSW	10.0	5.50F	185	730	/	950/825	560
16	6.50R16LT	10PR	107/102	N		BSW	10.5	5.50F	185	750	/	975/850	560
	7.00R16LT	12PR	115/110	N		BSW	10.5	5.50F	200	775	/	1215/1060	670

MC02
HISCEND-H



Specially designed pattern for commercial light trucks, minivans, and minibuses that offers outstanding handling on wet surfaces as well as excellent high speed durability.



Driving Comfort
The tread has a varied pitch design created to reduce noise and allow for a better driving experience.



Tread Pattern
Original pattern design ensures excellent performance and greater driving comfort on wet and dry roads.



Tread Design
Wider and deeper grooves increase wear resistance, efficiently drain water, and provide greater handling and stability.

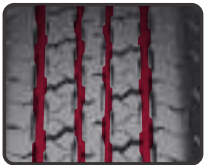


Rim	Size	PR	LI	SR	XL	SW	Tread Depth (mm)	Standard Rim (mm)	Section Width (mm)	Overall Diameter (mm)	UTQG	MAX LOAD (kg)	Pressure (kpa)
12	145R12C	8PR	86/84	P	/	BSW	8.0	4.00B	145	537	/	530/500	450
	155R12C	8PR	88/86	P	/	BSW	8.0	4.50B	157	550	/	560/530	450
13	155R13C	6PR	85/83	Q	/	BSW	8.0	4.50B	157	578	/	515/487	350
	165/70R13C	6PR	88/86	Q	/	BSW	8.0	5.00B	170	562	/	560/530	375
	165R13C	8PR	94/93	S	/	BSW	7.6	4.50B	167	596	/	670/650	450
	175R13C	8PR	97/95	S	/	BSW	8.0	5.00B	177	610	/	730/690	450
	175/65R14C	6PR	90/88	T	/	BSW	8.0	5J	177	584	/	600/560	375
14	175/70R14C	6PR	95/93	Q	/	BSW	8.0	5J	177	602	/	690/650	375
	175R14C	8PR	99/98	Q	/	BSW	9.0	5J	178	634	/	775/750	450
	185R14C	8PR	102/100	Q	/	BSW	9.0	5 1/2J	188	650	/	850/800	450
	195R14C	8PR	106/104	Q	/	BSW	9.0	5 1/2J	198	666	/	950/900	450
	205/75R14C	8PR	109/107	Q	/	WR	9.0	5 1/2J	203	664	/	1030/975	475
	205R14C	8PR	109/107	R	/	BSW	9.0	6J	208	686	/	1030/975	450
	185R15C	8PR	103/102	R	/	BSW	9.4	5 1/2J	188	674	/	875/850	450
15	195/70R15C	8PR	104/102	R	/	BSW	10.0	6J	201	655	/	900/850	450
	195R15C	8PR	106/104	R	/	BSW	9.0	5 1/2J	198	690	/	950/900	450
	205/65R15C	6PR	102/100	R	/	BSW	9.0	6J	209	647	/	850/800	375
	205/70R15C	8PR	106/104	R	/	BSW	9.0	6J	209	669	/	950/900	450
	215/70R15C	8PR	109/107	S	/	BSW	10.0	6 1/2J	221	683	/	1030/975	450
	215R15C	8PR	109/107	R	/	WR	10.0	6J	218	725	/	1030/975	450
	225/70R15C	8PR	112/110	R	/	BSW	9.0	6 1/2J	228	697	/	1120/1060	450
	175R16C	8PR	101/99	R	/	BSW	9.0	5J	178	684	/	825/775	450
16	185/75R16C	8PR	104/102	R	/	BSW	9.0	5J	184	684	/	900/850	475
	195/60R16C	6PR	99/97	T	/	BSW	9.0	6J	201	640	/	775/730	375
	195/65R16C	8PR	104/102	R	/	BSW	9.4	6J	201	660	/	900/850	475
	195/75R16C	8PR	107/105	R	/	BSW	10.0	5 1/2J	196	698	/	975/925	475
	205/65R16C	8PR	107/105	R	/	BSW	9.0	6J	209	672	/	975/925	475
	205/75R16C	8PR	110/108	R	/	BSW	9.0	5 1/2J	203	714	/	1060/1000	475
	205R16C	8PR	110/108	R	/	BSW	9.0	6J	208	736	/	1060/1000	450
	215/60R16C	8PR	108/106	T	/	BSW	9.0	6 1/2J	221	664	/	1000/950	475
	215/65R16C	8PR	109/107	R	/	BSW	9.0	6 1/2J	221	686	/	1030/975	475
	215/70R16C	6PR	108/106	Q	/	BSW	9.0	6 1/2J	221	708	/	1000/950	375
	215/75R16C	10PR	116/114	R	/	BSW	10.5	6J	216	728	/	1250/1180	525
	225/65R16C	8PR	112/110	R	/	BSW	9.0	6 1/2J	228	698	/	1120/1060	475
	225/75R16C	10PR	121/120	R	/	BSW	9.0	6J	223	744	/	1450/1400	575
	235/65R16C	8PR	115/113	R	/	BSW	9.0	7J	240	712	/	1215/1150	475
17	225/70R17C	6PR	112/110	R	/	BSW	9.0	6 1/2J	228	748	/	1120/1060	375



MST01 HISCEND-H

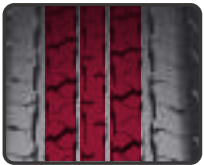
Special trailer-hauling design with great performance.



Stone Retention
The zigzag design of the tread grooves reduces stone retention and improves overall driving adaptability on all road conditions.



Tread Life
The groove and sipe design improves tire traction and resistance to heat buildup to effectively extend tire tread life.



Rib Design
Overall tread rigidity is improved to reduce tire deformation and reduce heat build-up.

Rim	Size	PR	LI	SR	XL	SW	Tread Depth (mm)	Standard Rim (mm)	Section Width (mm)	Overall Diameter (mm)	UTQG	MAX LOAD (kg)	Pressure (kpa)
13	ST175/80R13	6PR	91/87	L	/	BSW	7.6	5J	177	610	/	615/545	350
	ST205/75R14	6PR	100/96	L	/	BSW	7.8	5 1/2J	203	664	/	800/710	350
14	ST215/75R14	6PR	102/98	L	/	BSW	7.8	6J	216	678	/	850/750	350
	ST205/75R15	8PR	107/102	L	/	BSW	7.8	5 1/2J	203	689	/	975/850	450
15	ST225/75R15	10PR	117/112	L	/	BSW	7.8	6J	223	719	/	1285/1120	550
	ST235/80R16	10PR	124/120	L	/	BSW	8.0	6 1/2J	235	782	/	1600/1400	550
16	ST235/85R16	10PR	125/121	L	/	BSW	8.0	6 1/2J	235	806	/	1650/1450	550
	ST235/85R16	12PR	128/124	L	/	BSW	8.0	6 1/2J	235	806	/	1800/1600	660

MSU01

Rim	Size	PR	LI	SR	XL	SW	Tread Depth (mm)	Standard Rim (mm)	Section Width (mm)	Overall Diameter (mm)	UTQG	MAX LOAD (kg)	Pressure (kpa)
17	235/55R17	/	103	W	XL	BSW	8.0	7 1/2J	245	690	280/AA/A	875	340
	225/55R18	/	102	W	XL	BSW	8.0	7J	233	705	280/AA/A	850	340
	225/60R18	/	100	V	/	BSW	8.0	6 1/2J	228	727	280/AA/A	800	300
	235/50R18	/	97	V	/	BSW	8.0	7 1/2J	245	693	280/AA/A	730	300
18	235/55R18	/	104	W	XL	BSW	8.0	7 1/2J	245	715	280/AA/A	900	340
	235/60R18	/	107	W	XL	BSW	8.0	7J	240	739	280/AA/A	975	340
	245/60R18	/	105	V	/	BSW	8.0	7J	248	751	280/AA/B	925	300
	255/55R18	/	109	Y	XL	BSW	8.0	8J	265	737	280/AA/A	1030	340
	255/60R18	/	112	V	XL	BSW	8.0	7 1/2J	260	763	280/AA/B	1120	340
	265/60R18	/	110	V	/	BSW	8.0	8J	272	775	280/AA/B	1060	300
	275/40R18	/	103	W	XL	BSW	8.0	9 1/2J	278	677	280/AA/A	875	340
19	225/45R19	/	96	W	XL	BSW	8.0	7 1/2J	225	685	280/AA/A	710	340
	235/55R19	/	101	W	/	BSW	8.0	7 1/2J	245	741	280/AA/A	825	300
	245/55R19	/	103	V	/	BSW	8.0	7 1/2J	253	753	280/AA/A	875	300
	255/55R19	/	111	Y	XL	BSW	8.0	8J	265	763	280/AA/A	1090	340
	265/50R19	/	110	Y	XL	BSW	8.0	8 1/2J	277	749	280/AA/A	1060	340
20	255/40R20	/	101	Y	XL	BSW	8.0	9J	260	712	280/AA/A	825	340
	255/45R20	/	105	Y	XL	BSW	8.0	8 1/2J	255	738	280/AA/A	925	340
	255/50R20	/	109	Y	XL	BSW	8.0	8J	265	764	280/AA/A	1030	340
	255/55R20	/	110	Y	XL	BSW	8.0	8J	265	788	280/AA/A	1060	340
	265/50R20	/	111	Y	XL	BSW	8.0	8 1/2J	277	774	280/AA/A	1090	340
	275/35R20	/	102	W	XL	BSW	8.0	9 1/2J	278	700	280/AA/A	850	340
	275/55R20	/	117	W	XL	BSW	8.0	8 1/2J	284	810	280/AA/A	1285	340
	275/60R20	/	119	V	XL	BSW	8.0	8J	279	838	280/AA/B	1360	340
	285/40R20	/	104	Y	/	BSW	8.0	10J	290	736	280/AA/A	900	300
	285/50R20	/	116	W	XL	BSW	8.0	9J	297	794	280/AA/A	1250	340
	295/35R20	/	105	Y	XL	BSW	8.0	10 1/2J	301	714	280/AA/A	925	340
21	275/45R21	/	110	Y	XL	BSW	8.0	9J	273	781	280/AA/A	1060	340
22	285/45R22	/	114	W	XL	BSW	8.0	9 1/2J	285	815	280/AA/A	1180	340
	305/40R22	/	114	W	XL	BSW	8.0	11J	313	803	280/AA/A	1180	340
	305/45R22	/	118	W	XL	BSW	8.0	10J	303	833	280/AA/A	1320	340



HANDLING



DRAINAGE



SILENCE



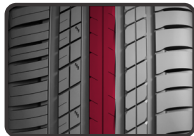
BRAKING



HIGH DURABILITY



Specially designed UHP SUV tire.



Safety

The center rib design provides greater traction for safer acceleration and braking.



Wear Resistance

The silicon compound tread makes the tire more wear resistance.



Comfortable Ride

The tread block pitch and built-in sipes reduce tire vibration and noise for a more comfortable ride.

MWC01
SHOW-H



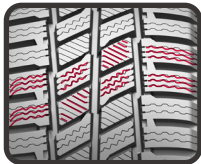
A winter tire specifically designed for commercial light trucks.



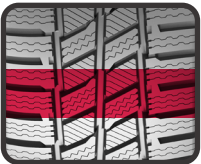
Handling
The wide and jagged groove design efficiently drains snow and water out of the tire to improve handling in winter weather.



Tread Design
The intersecting blocks, grooves, and sipes allow for more effective braking on ice and snow.



Grip
The precision cut sipes enhance grip on ice and snow to allow for a safer driving experience.



Comfortable Drive
The tread width and block patterns ensure a secure contact with the road surface to improve driving comfort.

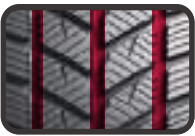
Rim	Size	PR	LI	SR	XL	SW	Tread Depth (mm)	Standard Rim (mm)	Section Width (mm)	Overall Diameter (mm)	UTQG	MAX LOAD (kg)	Pressure (kpa)
14	185R14C	8PR	102/100	R	/	BSW	9.6	5 1/2J	188	650	/	850/800	450
	195R14C	8PR	106/104	R	/	BSW	10.0	5 1/2J	198	666	/	950/900	450
15	195/70R15C	8PR	104/102	S	/	BSW	10.0	6J	201	655	/	900/850	450
	195R15C	8PR	106/104	R	/	BSW	10.0	5 1/2J	198	690	/	950/900	450
	205/70R15C	8PR	106/104	S	/	BSW	10.0	6J	209	669	/	950/900	450
	215/70R15C	10PR	113/111	S	/	BSW	10.0	6 1/2J	221	683	/	1150/1090	525
	225/70R15C	8PR	112/110	S	/	BSW	10.0	6 1/2J	228	697	/	1120/1060	450
16	185/75R16C	8PR	104/102	R	/	BSW	9.6	5J	184	684	/	900/850	475
	195/60R16C	6PR	99/97	T	/	BSW	10.2	6J	201	640	/	775/730	375
	195/65R16C	8PR	104/102	T	/	BSW	10.0	6J	201	660	/	900/850	475
	195/75R16C	8PR	107/105	R	/	BSW	10.0	5 1/2J	196	698	/	975/925	475
	205/65R16C	8PR	107/105	T	/	BSW	10.0	6J	209	672	/	975/925	475
	205/75R16C	10PR	113/111	R	/	BSW	10.0	5 1/2J	203	714	/	1150/1090	525
	215/60R16C	8PR	108/106	T	/	BSW	10.0	6 1/2J	221	664	/	1000/950	475
	215/65R16C	8PR	109/107	T	/	BSW	10.0	6 1/2J	221	686	/	1030/975	475
	215/75R16C	10PR	116/114	R	/	BSW	10.0	6J	216	728	/	1250/1180	525
	225/65R16C	8PR	112/110	T	/	BSW	10.0	6 1/2J	228	698	/	1120/1060	475
	225/75R16C	10PR	121/120	R	/	BSW	10.0	6J	223	744	/	1450/1400	575
	235/65R16C	8PR	115/113	R	/	BSW	10.2	7J	240	712	/	1215/1150	475

DYNAMO

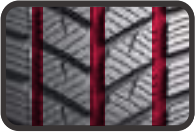
MWH01
SHOW-H



The special tread compound improves traction performance on snow and ice.



Handling
Wide tread and grooves improve handling on both ice and snow.



Groove Design
The sawtooth design on the edge of the grooves provides greater traction on snow and ice.



Winter Safety
V-shaped tread effectively expels water while the tread's winter compound maintains flexibility and improves wear resistance.

Rim	Size	PR	LI	SR	XL	SW	Tread Depth (mm)	Standard Rim (mm)	Section Width (mm)	Overall Diameter (mm)	UTQG	MAX LOAD (kg)	Pressure (kpa)
13	155/65R13	/	73	T	/	BSW	8.7	4.50B	157	532	/	365	300
	155/70R13	/	75	T	/	BSW	8.7	4.50B	157	548	/	387	300
	155/80R13	/	79	T	/	BSW	8.0	4.50B	157	578	/	437	300
	165/70R13	/	83	T	XL	BSW	8.7	5.00B	170	562	/	487	340
	175/70R13	/	86	T	XL	BSW	8.7	5.00B	177	576	/	530	340
14	165/65R14	/	79	T	/	BSW	8.7	5J	170	570	/	437	300
	165/70R14	/	85	T	XL	BSW	8.7	5J	170	588	/	515	340
	175/65R14	/	86	T	XL	BSW	8.7	5J	177	584	/	530	340
	175/70R14	/	88	T	XL	BSW	8.7	5J	177	602	/	560	340
	185/60R14	/	82	T	/	BSW	8.7	5 1/2J	189	578	/	475	300
	185/65R14	/	86	T	/	BSW	8.7	5 1/2J	189	596	/	530	300
	185/70R14	/	92	T	XL	BSW	8.7	5 1/2J	189	616	/	630	340
	195/60R14	/	86	T	/	BSW	8.7	6J	201	590	/	530	300
15	205/70R14	/	98	T	XL	BSW	8.7	6J	209	644	/	750	340
	175/65R15	/	88	H	XL	BSW	8.7	5J	177	609	/	560	340
	185/55R15	/	86	H	XL	BSW	8.7	6J	194	585	/	530	340
	185/60R15	/	88	H	XL	BSW	9.2	5 1/2J	189	603	/	560	340
	185/65R15	/	88	T	/	BSW	9.2	5 1/2J	189	621	/	560	300
	195/55R15	/	89	H	XL	BSW	9.2	6J	201	595	/	580	340
	195/60R15	/	88	T	/	BSW	9.2	6J	201	615	/	560	300
	195/65R15	/	95	T	XL	BSW	9.2	6J	201	635	/	690	340
	205/60R15	/	91	H	/	BSW	9.2	6J	209	627	/	615	300
	205/65R15	/	94	H	/	BSW	9.2	6J	209	647	/	670	300
16	205/70R15	/	96	T	/	BSW	9.2	6J	209	669	/	710	300
	195/45R16	/	84	H	XL	BSW	9.2	6 1/2J	195	582	/	500	340
	195/55R16	/	87	H	/	BSW	9.2	6J	201	620	/	545	300
	205/55R16	/	94	H	XL	BSW	9.2	6 1/2J	214	632	/	670	340
	205/60R16	/	92	H	/	BSW	9.2	6J	209	652	/	630	300
	215/55R16	/	97	H	XL	BSW	9.2	7J	226	642	/	730	340
	215/60R16	/	99	H	XL	BSW	9.2	6 1/2J	221	664	/	775	340
	215/65R16	/	98	H	/	BSW	9.2	6 1/2J	221	686	/	750	300
	225/55R16	/	99	H	XL	BSW	9.2	7J	233	654	/	775	340
	225/60R16	/	98	H	/	BSW	9.2	6 1/2J	228	676	/	750	300
17	205/45R17	/	88	H	XL	BSW	9.2	7J	206	616	/	560	340
	205/50R17	/	93	V	XL	BSW	8.5	6 1/2J	214	638	/	650	340
	215/45R17	/	87	H	/	BSW	9.2	7J	213	626	/	545	300
	215/55R17	/	94	H	/	BSW	9.2	7J	226	668	/	670	300
	225/45R17	/	94	H	XL	BSW	9.2	7 1/2J	225	634	/	670	340
	225/50R17	/	94	H	/	BSW	9.2	7J	233	658	/	670	300
	225/60R17	/	103	H	XL	BSW	8.6	6 1/2J	228	702	/	875	340
	225/65R17	/	102	S	/	BSW	9.2	6 1/2J	228	724	/	850	300
	235/45R17	/	94	H	/	BSW	9.2	8J	236	644	/	670	300
18	245/45R17	/	99	V	XL	BSW	8.6	8J	243	652	/	775	340
	225/40R18	/	92	H	XL	BSW	9.2	8J	230	637	/	630	340
	225/45R18	/	95	V	XL	BSW	8.6	7 1/2J	225	659	/	690	340
18	235/50R18	/	101	V	XL	BSW	8.6	7 1/2J	245	693	/	825	340



MWH02
SHOW-H

Rim	Size	PR	LI	SR	XL	SW	Tread Depth (mm)	Standard Rim (mm)	Section Width (mm)	Overall Diameter (mm)	UTQG	MAX LOAD (kg)	Pressure (kpa)
13	175/70R13	/	82	T	/	BSW	9.7	5.00B	177	576	/	475	300
	175/65R14	/	82	H	/	BSW	9.7	5J	177	584	/	475	300
14	175/70R14	/	88	T	XL	BSW	9.7	5J	177	602	/	560	340
	185/65R14	/	86	T	/	BSW	9.7	5 1/2J	189	596	/	530	300
	185/70R14	/	92	T	XL	BSW	9.7	5 1/2J	189	616	/	630	340
	185/65R15	/	88	T	/	BSW	9.7	5 1/2J	189	621	/	560	300
15	195/60R15	/	88	T	/	BSW	9.7	6J	201	615	/	560	300
	195/65R15	/	91	T	/	BSW	9.7	6J	201	635	/	615	300
	205/65R15	/	94	H	/	BSW	9.7	6J	209	647	/	670	300
	205/70R15	/	96	T	/	BSW	9.7	6J	209	669	/	710	300
	205/55R16	/	91	H	/	BSW	9.7	6 1/2J	214	632	/	615	300
16	205/60R16	/	96	H	XL	BSW	9.7	6J	209	652	/	710	340
	215/60R16	/	99	H	XL	BSW	9.7	6 1/2J	221	664	/	775	340
	215/65R16	/	98	H	/	BSW	9.7	6 1/2J	221	686	/	750	300
	215/70R16	/	100	S	/	BSW	9.7	6 1/2J	221	708	/	800	300
	215/50R17	/	91	T	/	BSW	9.7	7J	226	648	/	615	300
17	215/60R17	/	96	S	/	BSW	9.7	6 1/2J	221	690	/	710	300
	225/65R17	/	102	S	/	BSW	9.7	6 1/2J	228	724	/	850	300
	235/65R17	/	104	S	/	BSW	9.7	7J	240	738	/	900	300
	265/65R17	/	112	S	/	BSW	9.7	8J	272	776	/	1120	300



Winter Tread
The tread utilizes a winter specific compound that provides consistent performance for winter weather driving.



Ice Grip
The tread studs are designed in a pattern to provide better performance on ice and reduce tire vibration.



Winter Design
This directional pattern is equipped with dense sipes to deliver excellent performance in all winter conditions.

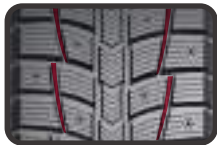
MWH03
SHOW-H



All new cold, soft tread formula and improve grip on ice and wet roads; optimized traction performance to achieve a safe driving experience.



Stud Arrangement
The 12 row stud arrangement increases grip distribution and traction to reduce skidding for an overall safer drive in winter weather conditions.



Winter Handling
The triangular serrated edges on the sides of the groove and large contact area effectively improve grip on ice and snow.



Tread Design
The unique sipe design offers excellent grip on ice while the tread compound maintains softness in extreme cold for greater driving capabilities on ice and snow.

Rim	Size	PR	LI	SR	XL	SW	Tread Depth (mm)	Standard Rim (mm)	Section Width (mm)	Overall Diameter (mm)	UTQG	MAX LOAD (kg)	Pressure (kpa)
15	175/65R15	/	84	T	/	BSW	10.0	5J	177	609	/	500	300
	185/55R15	/	82	T	/	BSW	10.0	6J	194	585	/	475	300
	185/60R15	/	84	T	/	BSW	10.0	5 1/2J	189	603	/	500	300
	195/55R15	/	85	H	/	BSW	10.0	6J	201	595	/	515	300
	215/70R15	/	98	T	/	BSW	10.0	6 1/2J	221	683	/	750	300
16	205/65R16	/	95	T	/	BSW	10.0	6J	209	672	/	690	300
	215/55R16	/	97	H	XL	BSW	10.0	7J	226	642	/	730	340
	225/60R16	/	98	T	/	BSW	10.0	6 1/2J	228	676	/	750	300
	225/65R16	/	100	T	/	BSW	10.0	6 1/2J	228	698	/	800	300
	235/65R16	/	103	T	/	BSW	10.0	7J	240	712	/	875	300
17	205/50R17	/	93	H	XL	BSW	10.0	6 1/2J	214	638	/	650	340
	215/45R17	/	91	T	XL	BSW	10.0	7J	213	626	/	615	340
	215/55R17	/	94	T	/	BSW	10.0	7J	226	668	/	670	300
	215/65R17	/	99	T	/	BSW	10.0	6 1/2J	221	712	/	775	300
	225/45R17	/	94	H	XL	BSW	10.0	7 1/2J	225	634	/	670	340
	225/50R17	/	98	H	XL	BSW	10.0	7J	233	658	/	750	340
	225/55R17	/	97	T	/	BSW	10.0	7J	233	680	/	730	300
	225/60R17	/	99	T	/	BSW	10.0	6 1/2J	228	702	/	775	300
	235/45R17	/	97	T	XL	BSW	10.0	8J	236	644	/	730	340
	235/55R17	/	99	H	/	BSW	10.0	7 1/2J	245	690	/	775	300
	235/60R17	/	102	T	/	BSW	10.0	7J	240	714	/	850	300
18	215/45R18	/	93	H	XL	BSW	10.0	7J	213	651	/	650	340
	215/55R18	/	95	T	/	BSW	10.0	7J	226	693	/	690	300
	225/40R18	/	92	H	XL	BSW	10.0	8J	230	637	/	630	340
	225/45R18	/	95	T	XL	BSW	10.0	7 1/2J	225	659	/	690	340
	225/55R18	/	98	T	/	BSW	10.0	7J	233	705	/	750	300
	225/60R18	/	100	T	/	BSW	10.0	6 1/2J	228	727	/	800	300
	235/50R18	/	101	H	XL	BSW	10.0	7 1/2J	245	693	/	825	340



MWS01
SHOW-H



The z-shaped main groove and sipe pattern improve traction on ice and snow. The quantity and position of the studs strengthen tire grip for improved safety in winter.



Stud Arrangement
The number and location of studs are designed to maximize tire grip and improve skid resistance.



Sipe Design
Interlocking sipes ensure driving safety by improving block rigidity and handling.



Groove Design
Jagged groove edges bite into ice and snow for improved grip and traction performance.



Winter Performance
The Z-shaped main grooves improve traction, prevent skidding, and reduce noise while driving on ice and snow.

Rim	Size	PR	LI	SR	XL	SW	Tread Depth (mm)	Standard Rim (mm)	Section Width (mm)	Overall Diameter (mm)	UTQG	MAX LOAD (kg)	Pressure (kpa)
15	235/75R15	/	105	S	/	BSW	11.0	6 1/2J	235	733	/	925	300
	225/70R16	/	103	S	/	BSW	11.0	6 1/2J	228	722	/	875	300
	235/70R16	/	106	S	/	BSW	11.0	7J	240	736	/	950	300
16	245/70R16	/	107	S	/	BSW	11.0	7J	248	750	/	975	300
	245/75R16	/	111	S	/	BSW	11.0	7J	248	774	/	1090	300
	LT225/75R16	10PR	115/112	Q	/	BSW	13.0	6J	223	744	/	1215/1120	550
	LT245/75R16	10PR	120/116	Q	/	BSW	13.0	7J	248	774	/	1380/1260	550
	245/65R17	/	107	S	/	BSW	11.0	7J	248	750	/	975	300
	245/70R17	/	110	S	/	BSW	11.0	7J	248	776	/	1060	300
17	265/70R17	/	115	S	/	BSW	11.0	8J	272	804	/	1215	300
	LT245/70R17	10PR	119/116	Q	/	BSW	13.0	7J	248	776	/	1360/1250	550
	LT245/75R17	10PR	121/118	R	/	BSW	13.0	7J	248	800	/	1450/1320	550
	LT265/70R17	10PR	121/118	Q	/	BSW	13.0	8J	272	804	/	1450/1320	550
	235/55R18	/	100	T	/	BSW	11.0	7 1/2J	245	715	/	800	300
	235/60R18	/	107	T	XL	BSW	11.0	7J	240	739	/	975	340
18	235/65R18	/	106	T	/	BSW	11.0	7J	240	763	/	950	300
	245/60R18	/	105	T	/	BSW	11.0	7J	248	751	/	925	300
	255/55R18	/	105	T	/	BSW	11.0	8J	265	737	/	925	300
	255/70R18	/	113	S	/	BSW	11.0	7 1/2J	260	815	/	1150	300
	265/60R18	/	110	T	/	BSW	11.0	8J	272	775	/	1060	300
	275/65R18	/	116	S	/	BSW	11.0	8J	279	815	/	1250	300
	LT275/65R18	10PR	123/120	R	/	BSW	13.0	8J	279	815	/	1550/1400	550
	LT275/70R18	10PR	125/122	R	/	BSW	13.0	8J	279	843	/	1650/1500	550
	225/55R19	/	99	H	/	BSW	11.0	7J	233	731	/	775	300
19	235/45R19	/	95	H	/	BSW	11.0	8J	236	695	/	690	300
	235/55R19	/	101	H	/	BSW	11.0	7 1/2J	245	741	/	825	300
	245/55R19	/	103	T	/	BSW	11.0	7 1/2J	253	753	/	875	300
20	245/50R20	/	102	H	/	BSW	11.0	7 1/2J	253	754	/	850	300
	275/55R20	/	117	S	XL	BSW	11.0	8 1/2J	284	810	/	1285	340
	275/60R20	/	119	S	XL	BSW	11.0	8J	279	838	/	1360	340



Important Tips for Optimal Tire Performance :

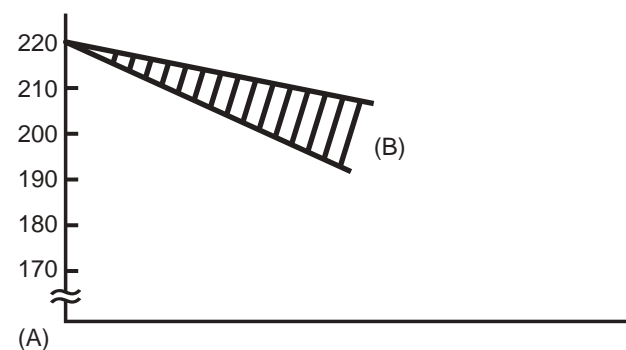
- ① Maintain optimum air pressure
- ② Inspect tread grooves to ensure tires are safe and legal
- ③ Visually check for tire damage

Ensure you check your tires once a month and before long trips to maintain performance and ensure safety.

Why is it important I have the correct tire pressure?

A tire at optimum air pressure should will ensure more safety, provide greater driving performance, improve tire life and reduce fuel consumption.

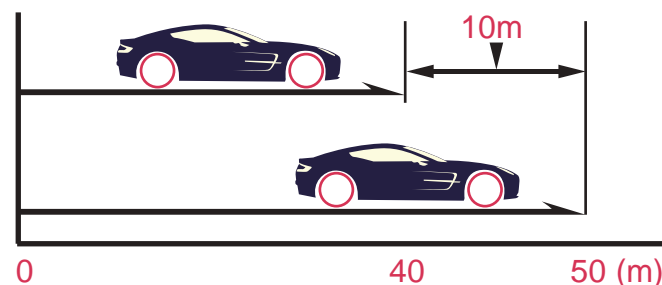
Tire air pressure decreases naturally (little by little). It is generally accepted that air pressure in tires on a passenger car decreases by 5–10% (10–20kPa) every month.



Tire size: 195/65R 15
 Starting pressure: 220kPa (100kPa=1.0kgf/cm²)
 (A) Air pressure (kPa)
 (B) Decreases by 10-20kPa a month

Dangers of Using Worn Tire

Worn tires need a longer stopping distance on wet roads.



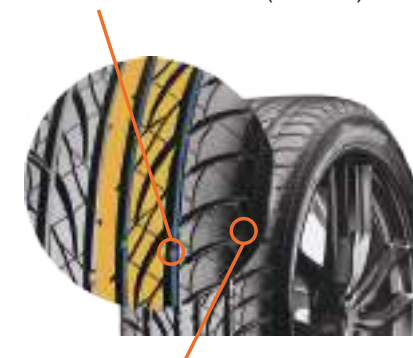
At the same speed (80km/h) and from the same braking point, there is a difference of 10 meters!

(A) New tire
 (B) Worn tire (worn out to 1.6mm)

Why is it Important I Check for Tire Wear?

The deeper the groove, which is on the surface of the tire, the more grip a tire will have. As your tread pattern wears over time, the grip will begin to decrease. Never use a tire where even just one tread wear indicator is exposed.

TWI:Tread Wear Indicator(1.6mm)



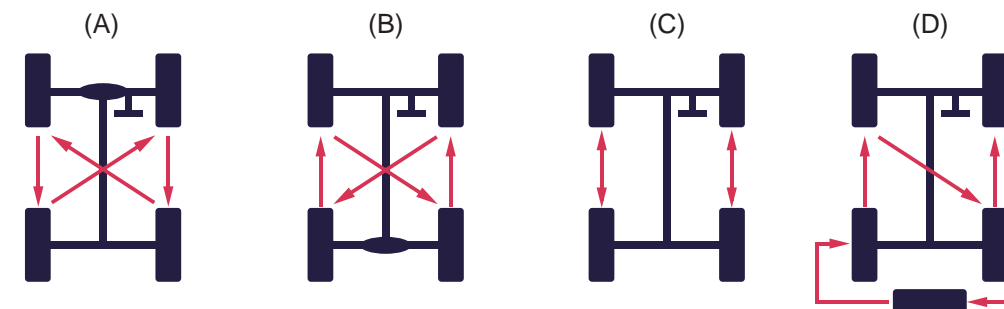
Indicator Mark:Triangle Symbol "△"

<Tire Tread Wear Indicator >

What are the advantages of tire rotation?

- ① Help Prevent Uneven Tread Wear
- ② Extension of Tire Service Life (money in your wallet)
- ③ Averaging of Tire Fatigue

Note: The front-wheel tires of an FF vehicle wear two or three times faster than the rear-wheel tires because the front-wheel tires function for both driving and steering.



Examples of Tire Rotation

(A) FF Vehicle (B) FR Vehicle (C) Tires with Directional Patterns (D) Spare Tire Included