

# CATALOG



Tires | Lubricants | Batteries | Tools and supplies | Car care products  
Equipment | Brake pads | Filters | Car accessories | Wiper blades

**EVOLUXX**

Since 1960

81 88 81 81

05 40 00 08

CUSTOMER SERVICE:

81 81 81 11

SECTOR 32 - STREET 49  
CHOUEIFAT - LEBANON

INFO@SAKA.COM.LB

WWW.SAKA.COM.LB



**EVOLVE  
WITHOUT  
LIMITS**

# TABLE OF CONTENTS

04 COMPANY PROFILE

---

06 BRAND LEVEL

---

12 LONG HAUL

---

24 REGIONAL

---

36 ON/OFF ROAD

---

46 LIGHT TRUCK

---

# COMPANY PROFILE

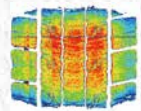
Shandong Linglong Tyre Co., Ltd. is a technical tire manufacturer integrating tire design, development, manufacturing and sales. Founded in 1975, the company, with over 40-year forging ahead, has seven R&D centers, seven manufacturing bases across the world currently and over 19,000 employees, with its products widely used on passenger vehicles, commercial vehicles, and engineering machinery vehicles. It has built diversified brand system for different markets. Linglong Tire had successful access to the A share market on July 6, 2016. It has been included in the three international indexes, the MSCI Index, the FTSE Russell Index and the S&P Emerging Market Indexes, winning the unanimous favor of the international capital market.

Linglong Group Co., Ltd. invested nearly 1.3 billion yuan, in cooperation with Spain IDIADA, to build Sino-Asia Tire Proving Ground, the first in China and among the top-ranking in the world, by referring to the highest international standards, which greatly improves the Company's R&D strength and R&D efficiency, helps the synchronous R&D with automakers in a more in-depth, professional and scientific way, and considerably shortens the development cycle.



## LINGLONG TBR CORE MOTIVATION AND TECHNOLOGIES

### SOCT TECHNOLOGY FOUNDATION

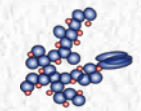


#### 01 BELTS PACKAGES

Ultra-high tensile belt packages are designed to provide great stiffness in longitudinal direction and flexibility in lateral direction to ensure superior load carrying capabilities.

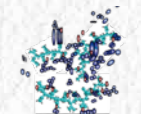


Tire contour is designed to have optimal footprint for even wear.



#### 02 BASE COMPOUND

New smart filler material concept enhance tire base, reducing heat build up for better tire durability, less rolling resistance.



#### LOW ABRASION AND HYSTERESIS SIDEWALL COMPOUND

For better sidewall resistance and low fuel consumption.



#### SPECIALIZED CAP COMPOUND

Application oriented new compound balances performance with special service demand.



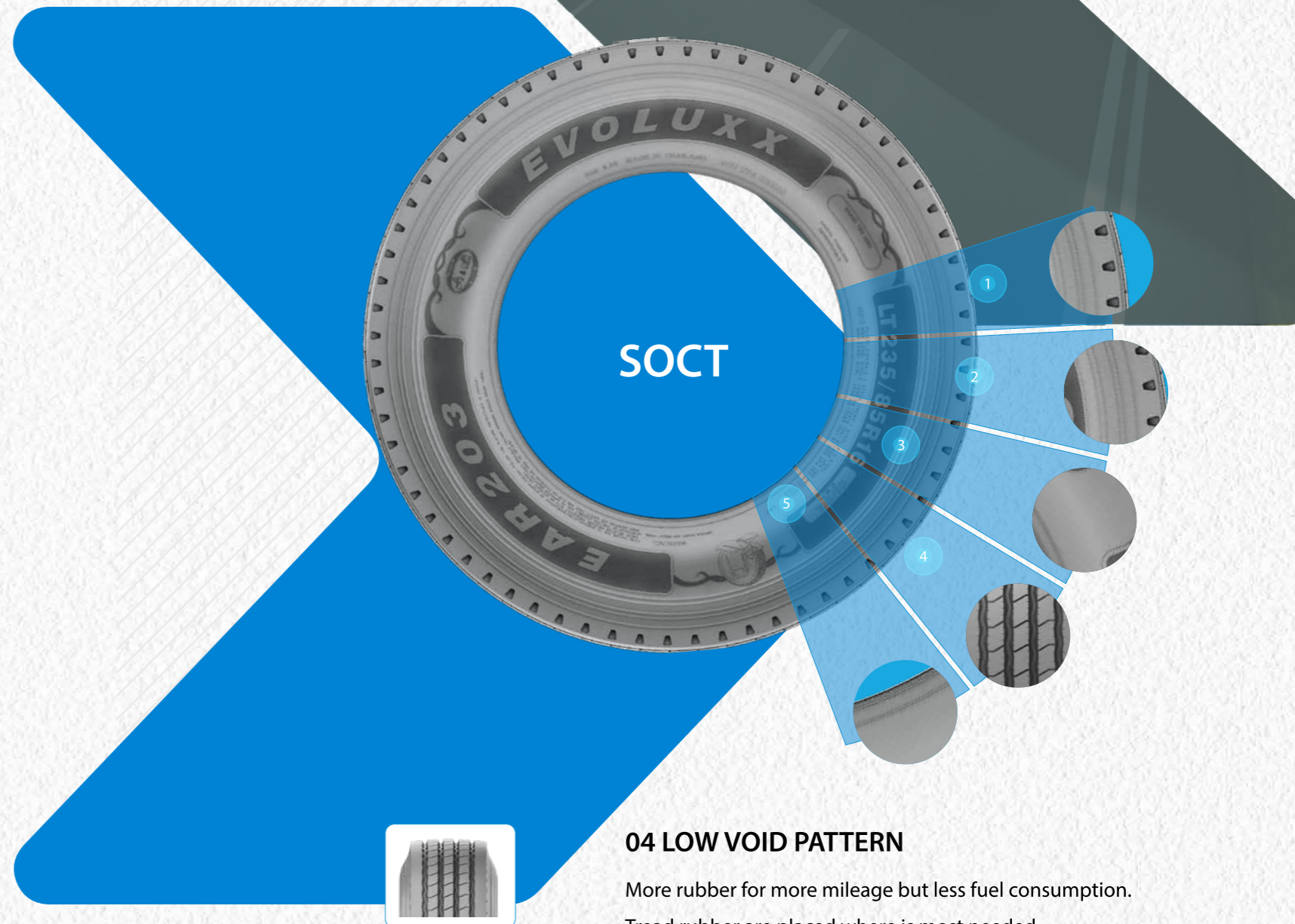
#### 03 BODY PLY (CASING)

Specially twisted cables, embedded in an extremely tear-proof mixture, isolate individual tears for better casing endurance and retreadability.



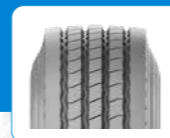
Higher density of ultra-high tensile ply wire improves impact resistance.

**Stress Optimization Control Technology** – SOCT is the technology foundation in the new Linglong TBR tire generation.



#### 04 LOW VOID PATTERN

More rubber for more mileage but less fuel consumption. Tread rubber are placed where is most needed.



#### 05 BEAD DESIGN

Steel cord reinforcement wrap around the steel ply and bead core. Reducing the stress at the bead area.



# BRAND LEVEL

Simple yet clear three-section sidewall design, featuring a performance indicator for easy identification of product application.

- 1 BRAND
- 2 DOT
- 3 RIM WIDTH
- 4 SIZE
- 5 PATTERN NAME
- 6 PERFORMANCE INDICATOR
- 7 WARNING
- 8 PLY RATING AND LOAD
- 9 PLACE OF ORIGIN
- 10 LOAD INDEX & SPEED RATING



# BRAND LEVEL

EVOLUXX new brand, new pattern and new sidewall design. Compared with the H brand, improve the TBR level and market share. Including four series: LONG HAUL/ REGIONAL/ON/OFF ROAD/LIGHT TRUCK.

## LONG HAUL



ESH100 EDH100 ETH100 EDH102 ETH102

## ON/OFF ROAD



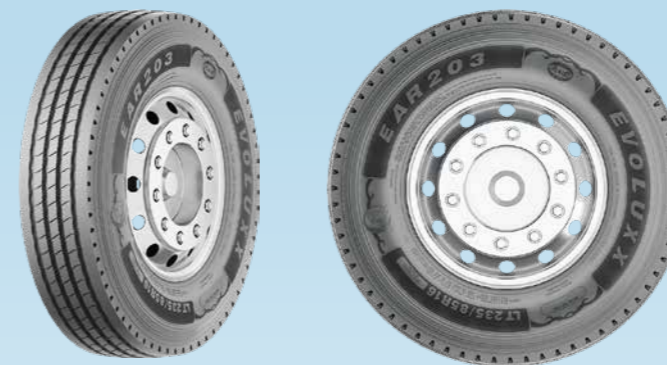
EAM300 EDM300 EAM301 EDM303

## REGIONAL



EAR200 EDR200 ETR200 EAR202 EDR202

## LIGHT TRUCK



EAR203 New sidewall design

# EVOLUXX PRODUCT MAP

**LONG HAUL**

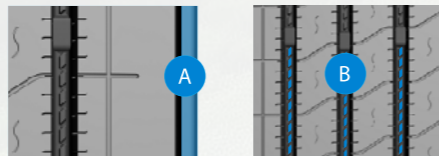


**LONG HAUL**



# ESH100

• STEER POSITION



- > A. Coupling groove design to prevent uneven wear
- > B. Stone ejector design to prevent stone retention and protect the groove bottom
- > C. Optimized footprint for even wear and increased mileage
- > D. Low rolling resistance
- > E. Robust casing material for improved durability and retreadability

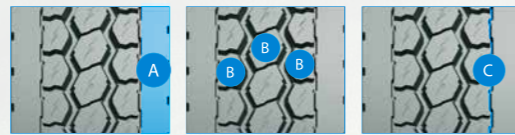


Puresize	Load index & Speed symbols	PR	Load Range	Rim	Max load and Max Air ( lbs&psi )				Overall Diameter in inches	Section Width in inches	Revolutions per mile	Tread Depth (in 32nds)
					Dual		Single					
					lbs	psi	lbs	psi				
295/75R22.5	144/141L	14	G	9.00	5675	110	6175	110	39.92	11.73	520	18
295/75R22.5	146/143L	16	H	9.00	6005	120	6610	120	39.92	11.73	520	18
11R22.5	144/142L	14	G	8.25	5840	105	6175	105	41.50	10.98	501	18
11R22.5	146/143L	16	H	8.25	6005	120	6610	120	41.50	10.98	501	18
285/75R24.5	144/141L	14	G	8.25	5675	110	6175	110	41.34	11.14	503	18
285/75R24.5	147/144L	16	H	8.25	6175	120	6780	120	41.34	11.14	503	18
11R24.5	146/143L	14	G	8.25	6005	105	6610	105	43.46	10.98	478	18
11R24.5	149/146L	16	H	8.25	6610	120	7160	120	43.46	10.98	478	18

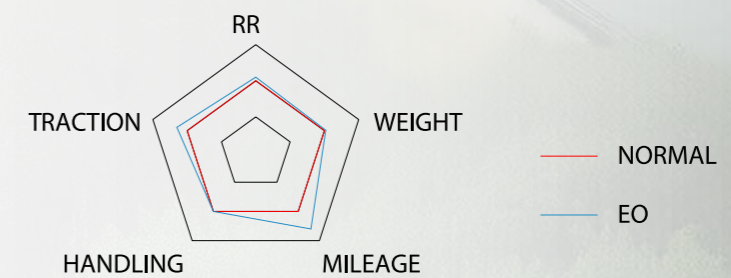


## EDH100

• DRIVE POSITION



- > A. Closed shoulder design, ensuring even wear throughout the tire life
- > B. Aggressive center ribs for improved wet & dry traction and prolonged tread life
- > C. Zigzag grooves designed to prevent cracking
- > D. Optimized footprint for even wear and increased mileage
- > E. Low rolling resistance
- > F. Robust casing material for improved durability and retreadability

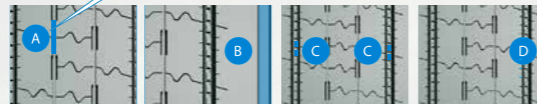
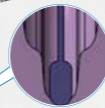


Puresize	Load index & Speed symbols	PR	Load Range	Rim	Max load and Max Air ( lbs&psi )				Overall Diameter in inches	Section Width in inches	Revolutions per mile	Tread Depth (in 32nds)
					Dual		Single					
					lbs	psi	lbs	psi				
295/75R22.5	144/141L	14	G	9.00	5675	110	6175	110	40.39	11.73	514	28
295/75R22.5	146/143L	16	H	9.00	6005	120	6610	120	40.39	11.73	514	28
	144/142L	14	G	8.25	5840	105	6175	105	41.93	10.98	495	28
	146/143L	16	H	8.25	6005	120	6610	120	41.93	10.98	495	28
285/75R24.5	144/141L	14	G	8.25	5675	110	6175	110	41.81	11.14	497	28
285/75R24.5	147/144L	16	H	8.25	6175	120	6780	120	41.81	11.14	497	28
	146/143L	14	G	8.25	6005	105	6610	105	43.94	10.98	473	28
	149/146L	16	H	8.25	6610	120	7160	120	43.94	10.98	473	28

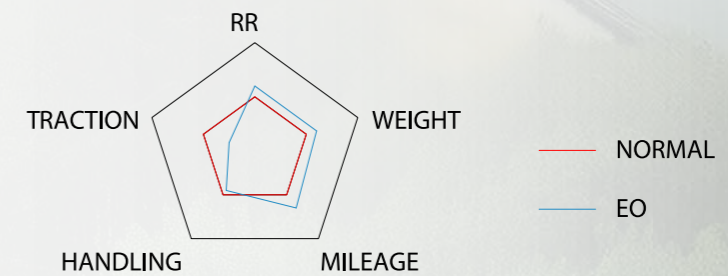


# ETH100

• TRAILER POSITION



- > A. Concealed groove design for improved fuel efficiency
- > B. Coupling groove design to prevent uneven wear
- > C. Stone ejector designed at the groove bottom to prevent stone retention and avoid damage to the groove bottom
- > D. Sipe-embedded groove wall design to prevent uneven wear
- > E. Optimized footprint for even wear and increased mileage
- > F. Robust casing material for improved durability and retreadability



Puresize	Load index & Speed symbols	PR	Load Range	Rim	Max load and Max Air ( lbs&psi )				Overall Diameter in inches	Section Width in inches	Revolutions per mile	Tread Depth (in 32nds)
					Dual		Single					
					lbs	psi	lbs	psi				
295/75R22.5	144/141L	14	G	9.00	5675	110	6175	110	39.92	11.73	520	12
295/75R22.5	146/143L	16	H	9.00	6005	120	6610	120	39.92	11.73	520	12
11R22.5	144/142L	14	G	8.25	5840	105	6175	105	41.34	10.98	503	12
11R22.5	146/143L	16	H	8.25	6005	120	6610	120	41.34	10.98	503	12
285/75R24.5	144/141L	14	G	8.25	5675	110	6175	110	41.34	11.14	503	12
285/75R24.5	147/144L	16	H	8.25	6175	120	6780	120	41.34	11.14	503	12
11R24.5	146/143L	14	G	8.25	6005	105	6610	105	43.46	10.98	478	12
11R24.5	149/146L	16	H	8.25	6610	120	7160	120	43.46	10.98	478	12

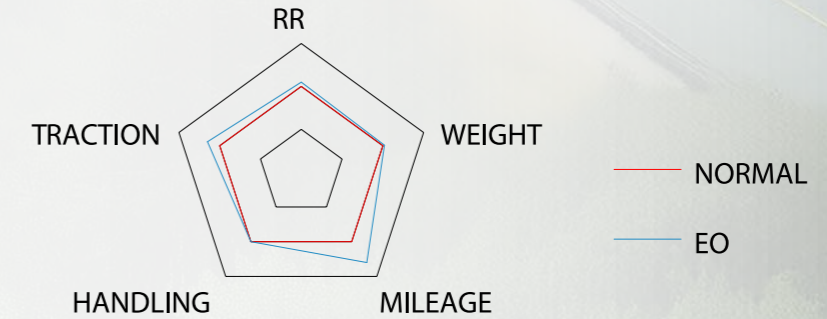


## EDH102

• DRIVE POSITION



- > A. Closed shoulder design to ensure even weight and torque distribution, prevent irregular wear, and achieve prolonged tread life and uniform wear
- > B. Six-groove tread pattern with high stiffness for longer mileage, even wear and low rolling resistance
- > C. 3D interlocking sipe design for higher tread stiffness
- > D. Robust casing material for improved durability and retreadability

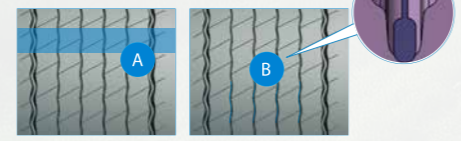


Puresize	Load index & Speed symbols	PR	Load Range	Rim	Max load and Max Air ( lbs&psi )				Overall Diameter in inches	Section Width in inches	Revolutions per mile	Tread Depth (in 32nds)
					Dual		Single					
					lbs	psi	lbs	psi				
445/50R22.5	161L	20	L	14.00	—	—	10200	120	40.09	17.52	522	23

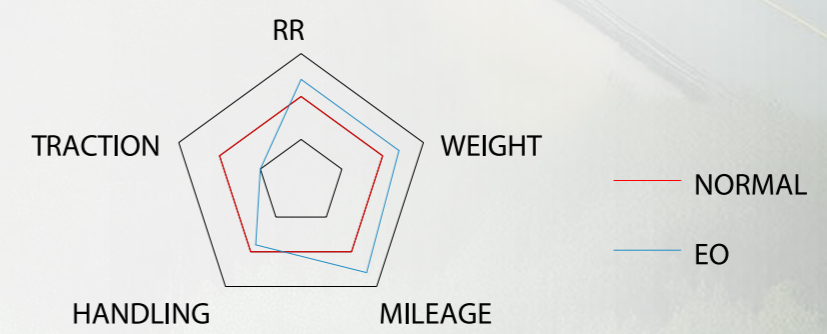


# ETH102

• TRAILER POSITION



- > A. Unique tread pattern with high stiffness, enabling controlled movement of ribs and lugs during rotation, ensuring increased mileage, even wear and reduced rolling resistance
- > B. Concealed groove design for improved fuel efficiency
- > C. Robust casing material for improved durability and retreadability



Puresize	Load index & Speed symbols	PR	Load Range	Rim	Max load and Max Air ( lbs&psi )				Overall Diameter in inches	Section Width in inches	Tread Depth in 32nds	Revolutions per mile
					Dual		Single					
					lbs	psi	lbs	psi				
445/50R22.5	161L	20	L	14.00	—	—	10200	120	40.09	17.52	522	13

**REGIONAL**

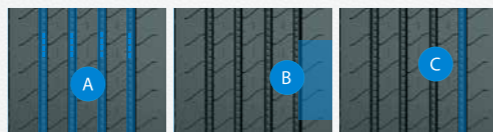


**REGIONAL**



# EAR200

• ALL POSITION



- > A. Stone ejector design with four straight grooves, ensuring even wear, smooth driving, reliable temperature control and excellent wet grip
- > B. Wide shoulder block design to prevent even wear
- > C. Offering a variety of sizes with different groove depths to meet diverse needs
- > D. Optimized footprint for even wear and increased mileage
- > E. Robust casing material for improved durability and retreadability



Puresize	Load index& Speed symbols	PR	Load Range	Rim	Max load and Max Air ( lbs&psi )				Overall Diameter in inches	Section Width in inches	Revolutions per mile	Tread Depth (in 32nds)
					Dual		Single					
					lbs	psi	lbs	psi				
295/75R22.5	144/141L	14	G	9.00	5675	110	6175	110	40	11.6	519	22
295/75R22.5	146/143L	16	H	9.00	6005	120	6610	120	40	11.6	519	22
11R22.5	144/142L	14	G	8.25	5840	105	6175	105	41.5	11.2	501	22
11R22.5	146/143L	16	H	8.25	6005	120	6610	120	41.5	11.2	501	22
285/75R24.5	144/141L	14	G	8.25	5675	110	6175	110	41.5	11.1	501	22
285/75R24.5	147/144L	16	H	8.25	6175	120	6780	120	41.5	11.1	501	22
11R24.5	146/143L	14	G	8.25	6005	105	6610	105	43.5	11.2	478	22
11R24.5	149/146L	16	H	8.25	6610	120	7160	120	43.5	11.2	478	22

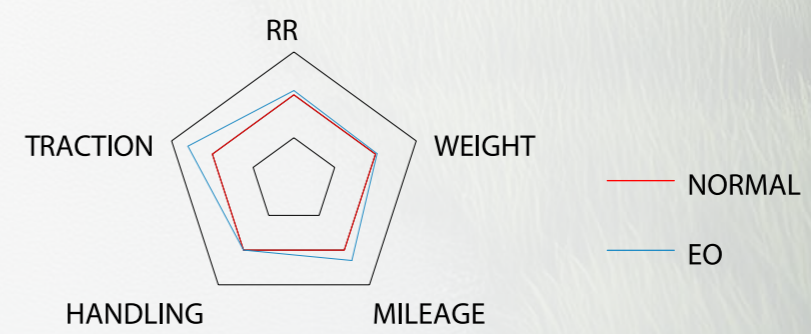


# EDR200

• DRIVE POSITION



- > A. Aggressive center ribs for improved wet & dry traction and prolonged tread life
- > B. Robust tread compound combined with center groove stone ejector designed to prolong the lifespan
- > C. Increased sipes depth for improved traction
- > D. Robust casing material for improved durability and retreadability

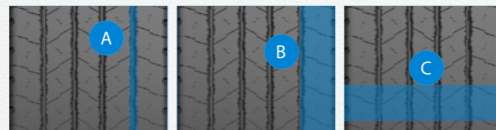


Puresize	Load index & Speed symbols	PR	Load Range	Rim	Max load and Max Air (lbs&psi)				Overall Diameter in inches	Section Width in inches	Revolutions per mile	Tread Depth (in 32nds)
					Dual		Single					
					lbs	psi	lbs	psi				
295/75R22.5	144/141L	14	G	9.00	5675	110	6175	110	40.16	11.73	517	28
295/75R22.5	146/143L	16	H	9.00	6005	120	6610	120	40.16	11.73	517	28
11R22.5	144/142L	14	G	8.25	5840	105	6175	105	41.69	10.98	498	28
11R22.5	146/143L	16	H	8.25	6005	120	6610	120	41.69	10.98	498	28
285/75R24.5	144/141L	14	G	8.25	5675	110	6175	110	41.57	11.14	500	28
285/75R24.5	147/144L	16	H	8.25	6175	120	6780	120	41.57	11.14	500	28
11R24.5	146/143L	14	G	8.25	6005	105	6610	105	43.70	10.98	475	28
11R24.5	149/146L	16	H	8.25	6610	120	7160	120	43.70	10.98	475	28

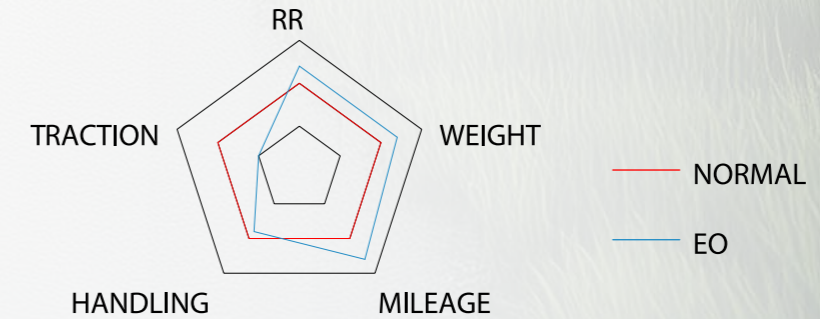


## ETR200

### • TRAILER POSITION



- > A. Deep groove tread pattern suitable for trailer applications
- > B. Wide closed shoulder design to resist lateral forces during trailer turns and prevent tearing
- > C. Durable tread compound for improved wear resistance and increased mileage
- > D. Robust casing material for improved durability and retreadability

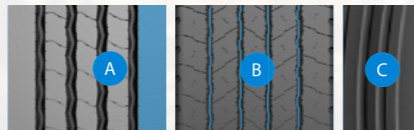
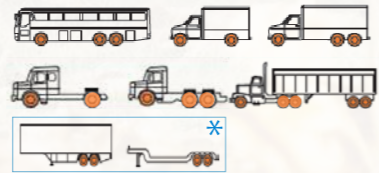


Puresize	Load index & Speed symbols	PR	Load Range	Rim	Max load and Max Air (lbs&psi)				Overall Diameter in inches	Section Width in inches	Revolutions per mile	Tread Depth (in 32nds)
					Dual		Single					
					lbs	psi	lbs	psi				
295/75R22.5	144/141L	14	G	9.00	5675	110	6175	110	39.92	11.73	520	16
295/75R22.5	146/143L	16	H	9.00	6005	120	6610	120	39.92	11.73	520	16
11R22.5	144/142L	14	G	8.25	5840	105	6175	105	41.34	10.98	503	16
11R22.5	146/143L	16	H	8.25	6005	120	6610	120	41.34	10.98	503	16
285/75R24.5	144/141L	14	G	8.25	5675	110	6175	110	41.34	11.14	503	16
285/75R24.5	147/144L	16	H	8.25	6175	120	6780	120	41.34	11.14	503	16
11R24.5	146/143L	14	G	8.25	6005	105	6610	105	43.46	10.98	478	16
11R24.5	149/146L	16	H	8.25	6610	120	7160	120	43.46	10.98	478	16

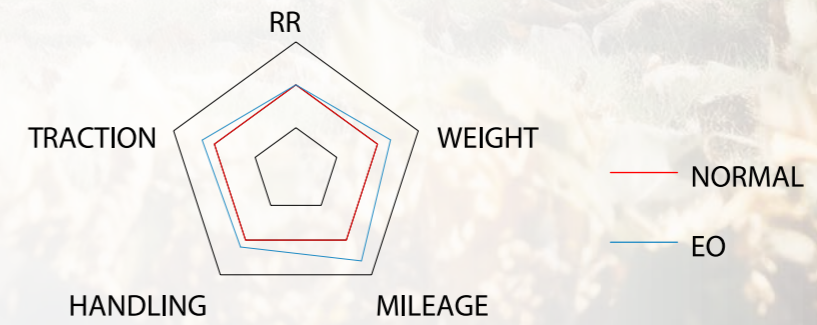


# EAR202

• ALL POSITION/TRAILER POSITION\*



- > A. Durable tread compound and robust shoulder designed for excellent wear resistance
- > B. 4-groove pattern combined with zigzag and straight grooves, offering outstanding traction and water drainage
- > C. Sidewall anti-scratch line to prevent sidewall wear and scratches
- > D. Robust casing material for improved durability and retreadability



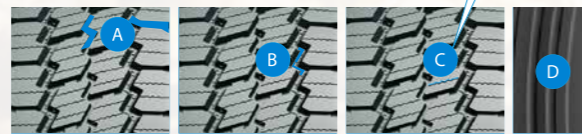
Pattern	Puresize	Load index & Speed symbols	PR	Load Range	Rim	Max load and Max Air (lbs&psi)				Overall Diameter in inches	Section Width in inches	Revolutions per mile	Tread Depth (in 32nds)
						Dual		Single					
						lbs	psi	lbs	psi				
ETL202*	215/75R17.5	135/133J	16	H	6.00	4540	123	4805	123	30.20	8.35	688	16
ETL202*	235/75R17.5	143/141J	18	J	6.75	5675	127	6005	127	31.38	9.17	662	16
ETL202*	245/70R17.5	143/141J	18	J	7.50	5675	127	6005	127	31.06	9.76	668	15
EAR202	225/70R19.5	125/123M	12	F	6.75	3415	95	3640	95	31.93	8.90	651	16
EAR202	225/70R19.5	128/126M	14	G	6.75	3750	110	3970	110	31.93	8.90	651	16
EAR202	245/70R19.5	133/131M	14	G	7.50	4300	110	4540	110	33.03	9.76	629	17
EAR202	245/70R19.5	135/133M	16	H	7.50	4540	120	4805	120	33.03	9.76	629	17
EAR202	265/70R19.5	140/138M	16	H	7.50	5205	112	5510	112	34.13	10.31	609	17
EAR202	255/70R22.5	140/137M	16	H	7.50	5070	120	5510	120	36.61	10.04	567	17
EAR202	275/70R22.5	148/145M	16	H	8.25	6395	130	6945	130	37.72	10.87	551	19
EAR202	10R22.5	141/139M	14	G	7.50	5355	115	5675	115	40.10	10.00	518	18

\* —Use for low platform trailer

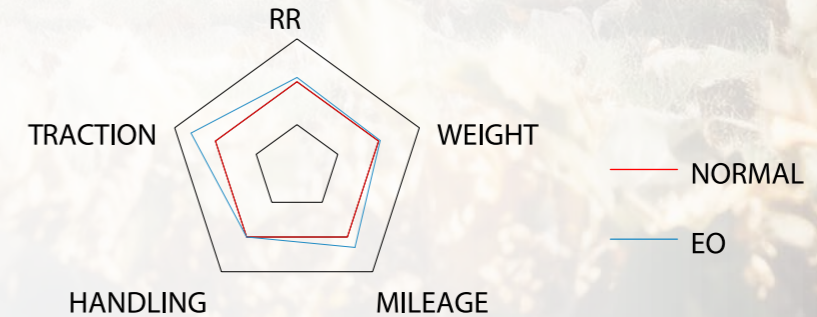


# EDR202

• DRIVE POSITION



- > A. Aggressive zigzag grooves and open shoulder design, ensuring excellent traction in snow and mud conditions
- > B. Stone ejector designed at the groove bottom to prevent stone retention and avoid damage to the groove bottom
- > C. 3D interlocking sipe design for higher tread stiffness
- > D. Sidewall anti-scratch line to prevent sidewall wear and scratches
- > E. Robust casing material for improved durability and retreadability



Puresize	Load index & Speed symbols	PR	Load Range	Rim	Max load and Max Air ( lbs&psi )				Overall Diameter in inches	Section Width in inches	Revolutions per mile	Tread Depth (in 32nds)
					Dual		Single					
					lbs	psi	lbs	psi				
215/75R17.5	135/133L	16	H	6.00	4540	123	4805	123	30.2	8.35	688	19
225/70R19.5	125/123M	12	F	6.75	3415	95	3640	95	31.93	8.90	651	19
225/70R19.5	128/126M	14	G	6.75	3750	110	3970	110	31.93	8.90	651	19
245/70R19.5	133/131M	14	G	7.50	4300	110	4540	110	33.03	9.76	629	20
245/70R19.5	135/133M	16	H	7.50	4540	120	4805	120	33.03	9.76	629	20
265/70R19.5	137/134L	14	G	7.50	4675	110	5070	110	34.17	10.31	605	20

**ON/OFF ROAD**

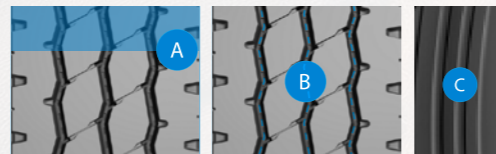


**ON/OFF ROAD**

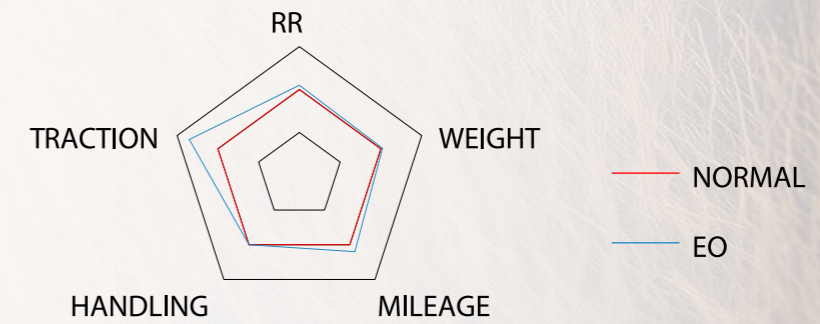


## EAM300

• ALL POSITION



- > A. New tread compound with increased wear volume, ensuring improved wear and cut resistance
- > B. Stone ejector designed at the groove bottom to prevent stone retention and avoid damage to the groove bottom
- > C. Sidewall anti-scratch line to prevent sidewall wear and scratches
- > D. Robust casing material for improved durability and retreadability



Puresize	Load index & Speed symbols	PR	Load Range	Rim	Max load and Max Air (lbs&psi)				Overall Diameter in inches	Section Width in inches	Revolutions per mile	Tread Depth (in 32nds)
					Dual		Single					
					lbs	psi	lbs	psi				
11R22.5	146/143K	16	H	8.25	6005	120	6610	120	41.50	10.98	501	23
11R24.5	149/146K	16	H	8.25	6610	120	7160	120	43.46	10.98	478	23
315/80R22.5	157/154K	20	L	9.00	8270	130	9090	130	42.13	12.28	493	24

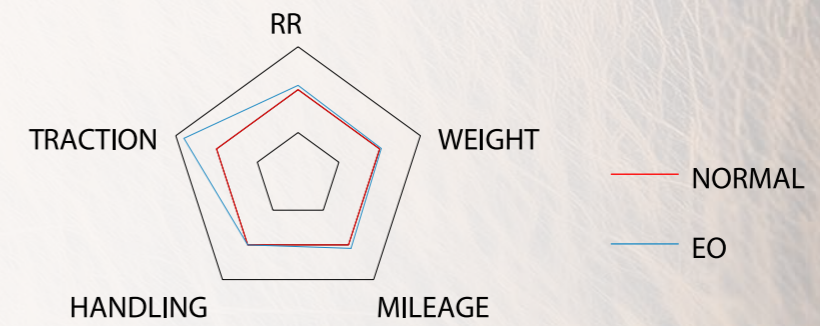


## EDM300

• DRIVE POSITION



- > A. Aggressive center lugs for improved wet & dry traction and prolonged tread life
- > B. Stabilizer rib design between lugs for improved tread stiffness
- > C. Sidewall anti-scratch line to prevent sidewall wear and scratches
- > D. Robust casing material for improved durability and retreadability

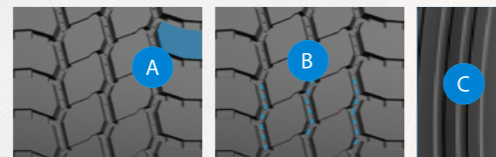


Puresize	Load index& Speed symbols	PR	Load Range	Rim	Max load and Max Air (lbs&psi)				Overall Diameter in inches	Section Width in inches	Revolutions per mile	Tread Depth (in 32nds)
					Dual		Single					
					lbs	psi	lbs	psi				
11R22.5	146/143L	16	H	8.25	6005	120	6610	120	41.93	10.98	495	26
11R24.5	149/146L	16	H	8.25	6610	120	7160	120	43.94	10.98	473	28

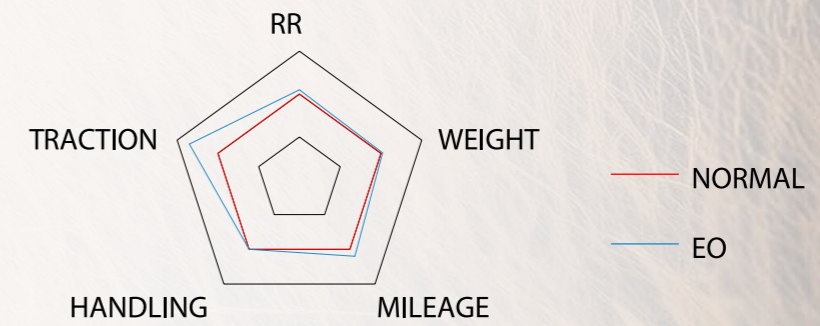


## EAM301

• ALL POSITION



- > A. Square shoulder lugs for optimized ground pressure and excellent wear resistance; tread pattern design
- > B. Stone ejector designed at the groove bottom to prevent stone retention and avoid damage to the groove bottom
- > C. Sidewall anti-scratch line to prevent sidewall wear and scratches
- > D. Robust casing material for improved durability and retreadability



Puresize	Load index & Speed symbols	PR	Load Range	Rim	Max load and Max Air (lbs&psi)				Overall Diameter in inches	Section Width in inches	Revolutions per mile	Tread Depth (in 32nds)
					Dual		Single					
					lbs	psi	lbs	psi				
385/65R22.5	160K	20	L	11.75	—	—	9920	130	42.20	15.31	492	23
425/65R22.5	165K	20	L	12.25	—	—	11400	120	44.25	16.61	469	23
445/65R22.5	168K	20	L	13.00	—	—	12300	120	45.28	17.48	462	23

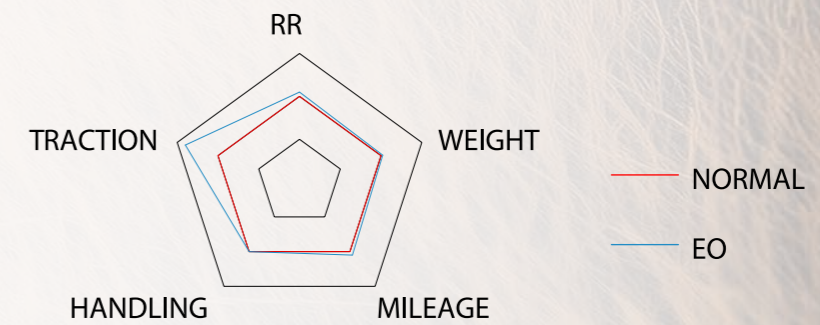


## EDM303

• DRIVE POSITION



- > A. Open shoulder design for excellent traction, combined with large tread lugs and proprietary cap compound to resist cuts and punctures
- > B. Stablizer rib design between lugs for improved tread stiffness
- > C. Sidewall anti-scratch line to prevent sidewall wear and scratches
- > D. Robust casing material for improved durability and retreadability



Puresize	Load index & Speed symbols	PR	Load Range	Rim	Max load and Max Air (lbs&psi)				Overall Diameter in inches	Section Width in inches	Revolutions per mile	Tread Depth (in 32nds)
					Dual		Single					
					lbs	psi	lbs	psi				
11R22.5	146/143F	16	H	8.25	6005	120	6610	120	41.93	10.98	495	30
11R24.5	149/146F	16	H	8.25	6610	120	7160	120	43.94	10.98	473	30
12R22.5	150/147F	16	J	9.00	6780	120	7390	120	43.16	11.80	481	30

**LIGHT TRUCK**

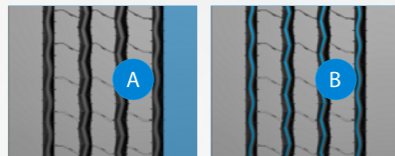


**LIGHT TRUCK**

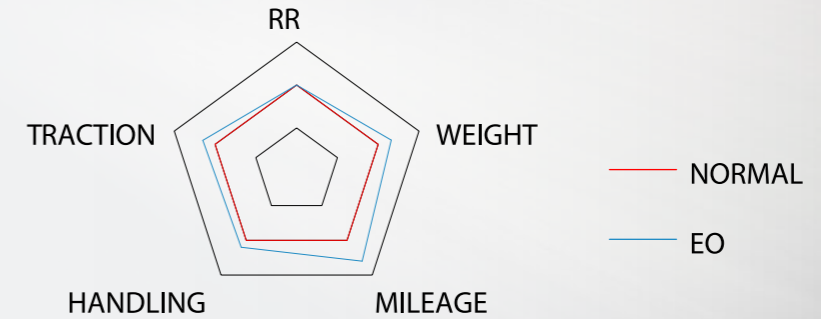


## EAR203

• ALL POSITION



- > A. Durable tread compound and robust shoulder designed for excellent wear resistance
- > B. 4-groove pattern combined with zigzag and straight grooves, offering outstanding traction and water drainage
- > C. All-steel structure product
- > D. Robust casing material for improved durability and retreadability



Puresize	Load index & Speed symbols	PR	Load Range	Rim	Max load and Max Air ( lbs&psi )				Overall Diameter in inches	Section Width in inches	Revolutions per mile	Tread Depth (in 32nds)
					Dual		Single					
					lbs	psi	lbs	psi				
LT215/85R16	119/116L	12	F	6.00	2755	95	3000	95	30.39	8.50	683	14
LT225/75R16	119/116L	12	F	6.00	2755	95	3000	95	29.29	8.78	709	14
LT235/85R16	123/120L	12	F	6.50	3085	95	3415	95	31.50	9.25	659	14
LT245/75R16	123/120L	12	F	7.00	3085	95	3415	95	29.49	9.76	704	14

**Warranty Eligibility**

This limited warranty applies to all the qualified replacement market Truck and Bus Tires produced by Shandong Linglong Tyre Co., Ltd. and all its subsidiaries. This Limited Warranty only applies to the original purchaser, and the tire has a complete brand identification, DOT or barcode . and it is valid if all of the following apply:

- The tires are manufactured after January 1, 2025, and are shipped to North America for sale and use.
- The tire fails due to the workmanship or materials.
- The tire shall not exceed the warranty period, and the remaining pattern shall not be less than TWI.

**What is warranted and for how long**

- The warranty period is 6 years from the date of tire production, and the remaining pattern depth is not less than TWI .
- If the tire fails due to manufacturing reasons and meets the warranty scope and conditions, the remaining pattern exceeds TWI, the new tire of the same specification will be covered free of charge.

**What is not warranted**

- 1.Road hazard injuries or damages caused by obstacles or debris, such as cuts, punctures (whether repairable or not), snags, bruises, tears, abrasions or impact breaks.
- 2.Improper repairs or repairs that have failed.
- 3.Improper inflation or other maintenance abuses.
- 4.Improper mounting/dismounting.
- 5.Mechanical irregularities such as bent wheel assemblies, misalignment worn or faulty components.
- 6.Accident, corrosion, tire alteration, vandalism, fire, theft or damages cause by nature.
- 7.Damage from overinflation or under-inflation, overloading, defective vehicle mechanical conditions.
- 8.Non-racing or off-road tires that are misused or abused for racing or off-road purposes.
- 9.Ozone or weather cracking or other abuse, misuse, tire alteration, run flat.
- 10.Tire which D.O.T identification number and/or brand name removed intentionally.
- 11.Tires that have been modified after leaving the factory , such as fillers, sealants, balancing substances and external tire treatments or materials of any kind. If the added material is the cause of a failure, a tire will not be accepted for warranty claim.
- 12.Abnormal tread wear resulting from improper installation, wheel misalignment, tire/wheel assembly imbalance, etc.
- 13.Vehicles or tires operated in excess of the rated Work Capacity Factor.
- 14.Additional monetary loss, such as damage of the vehicle or time, etc.

**CASING WARRANTY**

We offer retreading guarantees for Truck and Bus Tires. if the tires cannot be retreaded due to the manufacturer's own reasons, a subsidy will be provided. This renovation rule applies only to the United States and Canada.

ATLAS brand offer a 6-year warranty with 2 retreads; Some specified patterns offer a 7-year warranty with 3 retreads; Some specified patterns offer a 8-year warranty with 4 retreads; The specific details of the specified patterns are as follows.

Brand	Warranty	Specified tire patterns
EVOLUXX	Warranty period for retreading is 6 years,and can be retreaded 2 times. For the specified tire patterns,retreading warranty period is 7 years,and can be retreaded 3 times.	ESH100
		EDH100
		ETH100
		EAR200
		EDR200
		ETR200

**To make a claim under this limited warranty**

- 1.Present your tires and the original purchase receipt to point of purchase or any the Company’ s dealer.
- 2.Complete and sign the Claim Adjustment form provided, keep a copy for your records and leave the tire with the dealer to process the warranty claim.

**Owner’ s obligation**

- 1.At the time of purchase, tires must be properly installed with recommended inflation and balanced. Observe rotation and alignment regularly according to recommendations.
- 2.Refer to any authorized the Company’ s dealer or point of purchase for adjustment claim.
- 3.Owner is responsible for service charges and applicable taxes.
- 4.Submit a copy of the original purchase receipt to support the adjustment claim.

**Exclusions, Limitations, and Legal Rights**

No representative or dealer is authorized to make any representation, promise, or agreement on behalf of Linglong, except as expressly stated in this document. Any tire, regardless of construction quality, may fail in service or otherwise become unserviceable due to conditions beyond the manufacturer's control. This warranty does not constitute a representation that tire failure will not occur under any circumstances.

**DISCLAIMER:** This warranty is provided in lieu of all other warranties and representations, express or implied. Linglong expressly disclaims any and all implied warranties, including but not limited to the implied warranties of merchantability and fitness for a particular purpose. No other warranty or representation of any kind shall be deemed to exist or arise by operation of law.

**LIMITATION OF DAMAGES:** Under no circumstances shall Linglong be liable for any indirect, special, incidental, consequential, or punitive damages, including but not limited to loss of profits, business interruption, loss of reputation or goodwill, or costs related to replacement transportation or other associated expenses. Certain states or provinces do not allow the exclusion or limitation of incidental or consequential damages; therefore, some portions of this limitation may not be enforceable in specific jurisdictions.

This warranty sets forth specific legal obligations, and additional rights may apply depending on the governing state or provincial law.



CAPRICORN UHP



CAPRICORN HP



CAPRICORN 4X4 HP



ROTATOR H/T



ROTATOR A/T



SAGITTA X/T



ROTATOR R/T



ROTATOR M/T

## CONTENTS

08	CAPRICORN UHP
10	CAPRICORN HP
14	CAPRICORN 4×4 HP
16	ROTATOR H/T
18	ROTATOR A/T
20	SAGITTA X/T
22	ROTATOR R/T
26	ROTATOR M/T

# VOLVO COMPANY PROFILE

A red sports car is shown in motion on a road, kicking up dust. The image is overlaid with a large, semi-transparent blue geometric shape that resembles a stylized 'V' or a series of overlapping triangles. The background is a dark, cloudy sky.

Shandong Linglong Tyre Co., Ltd. is a technical tire manufacturer integrating tire design, development, manufacturing and sales. Founded in 1975, the company, with over 40-year forging ahead, has seven R&D centers, seven manufacturing bases across the world currently and over 19,000 employees, with its products widely used on passenger vehicles, commercial vehicles, and engineering machinery vehicles. It has built diversified brand system for different markets. Linglong Tire had successful access to the A share market on July 6, 2016. It has been included in the three international indexes, the MSCI Index, the FTSE Russell Index and the S&P Emerging Market Indexes, winning the unanimous favor of the international capital market.

Linglong Group Co., Ltd. invested nearly 1.3 billion yuan, in cooperation with Spain IDIADA, to build Sino-Asia Tire Proving Ground, the first in China and among the top-ranking in the world, by referring to the highest international standards, which greatly improves the Company's R&D strength and R&D efficiency, helps the synchronous R&D with auto-makers in a more in-depth, professional and scientific way, and considerably shortens the development cycle.

# EVOLUX



**ROTATOR M/T**  
MUD-TERRAIN



**ROTATOR R/T**  
RUGGED-TERRAIN

2025  
NEW



**SAGITTA X/T**  
EXTREME ALL-TERRAIN

Sport



**CAPRICORN UHP**  
PCR ULTRA HIGH PERFORMANCE



**CAPRICORN 4x4 HP**  
SUV ULTRA HIGH PERFORMANCE

Off Road

On Road



**ROTATOR A/T**  
ALL-TERRAIN

Comfort



**ROTATOR H/T**  
HIGHWAY-TERRAIN



**CAPRICORN HP**  
PCR HIGH PERFORMANCE

## ALL SEASON ALL WEATHER

**EVOLU>X**



# PASSENGER CAR TIRE



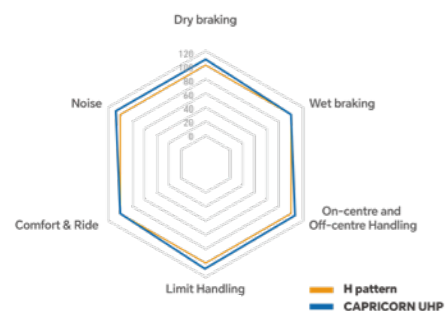
**CAPRICORN UHP**



**CAPRICORN HP**

# CAPRICORN UHP

PCR Ultra High Performance



## Superb handling performance

- › Outside large shoulder blocks improve tire rigidity and handling
- › 3D sipes balance the tread block stiffness and improve handling performance

## Excellent dry and wet braking

- › Four longitudinal grooves improve braking performance and traction performance on wet roads
- › New generation tread compound can be used all season ,and improve wet and dry braking performance



RIM	Size	Ply Rating	Load index	Speed Symbols	Standard Rim	Standard Load		Max Pressure	
						kg	lbs	kPa	psi
16	195/45R16 XL		84	V	61/2J	500	1102	340	50
	205/50R16 XL		91	W	61/2J	615	1356	340	50
	205/55R16 XL		94	W	61/2J	670	1477	340	50
	215/55R16 XL		97	W	7J	730	1609	340	50
	225/50R16 XL		96	V	7J	710	1565	340	50
17	205/40R17 XL		84	W	71/2J	500	1102	340	50
	205/45R17 XL		88	W	7J	560	1235	340	50
	205/50R17 XL		93	W	61/2J	650	1433	340	50
	215/40R17 XL		87	W	71/2J	545	1201	340	50
	215/45R17 XL		91	W	7J	615	1356	340	50
	215/50R17 XL		95	W	7J	690	1521	340	50
	215/55R17 XL		98	W	7J	750	1653	340	50
	225/45R17 XL		94	W	71/2J	670	1477	340	50
	225/50R17 XL		98	W	7J	750	1653	340	50
	235/45R17 XL		97	W	8J	730	1609	340	50
	245/40R17 XL		95	W	81/2J	690	1521	340	50
	245/45R17 XL		99	W	8J	775	1709	340	50
18	215/35R18 XL		84	W	71/2J	500	1102	340	50
	215/40R18 XL		89	Y	71/2J	580	1279	340	50
	225/40R18 XL		92	Y	8J	630	1389	340	50
	225/45R18 XL		95	W	71/2J	690	1521	340	50
	225/50R18		95	V	7J	690	1521	300	44
	235/40R18 XL		95	W	81/2J	690	1521	340	50
	235/45R18 XL		98	Y	8J	750	1653	340	50
	235/50R18 XL		101	W	71/2J	825	1819	340	50
	245/40R18 XL		97	W	81/2J	730	1609	340	50
	245/45R18 XL		100	W	8J	800	1764	340	50
	255/45R18 XL		103	W	81/2J	875	1929	340	50
	275/25R28 XL		99	W	10J	775	1709	340	50
	275/40R18 XL		103	Y	91/2J	875	1929	340	50
	19	225/35R19 XL		88	W	8J	560	1235	340
235/35R19 XL			91	W	81/2J	615	1356	340	50
235/40R19 XL			96	Y	81/2J	710	1565	340	50
235/55R19 XL			105	Y	71/2J	925	2039	340	50
245/40R19 XL			98	Y	81/2J	750	1653	340	50
245/45R19 XL			102	W	8J	850	1874	340	50
275/30R19 XL			96	W	91/2J	710	1565	340	50
275/35R19 XL			100	Y	91/2J	800	1764	340	50
275/40R19 XL		105	Y	91/2J	925	2039	340	50	
20	225/35R20 XL		90	W	8J	600	1323	340	50
	235/45R20 XL		100	W	8J	800	1764	340	50
	245/35R20 XL		95	W	81/2J	690	1521	340	50
	245/40R20 XL		99	Y	81/2J	775	1709	340	50
	245/45R20 XL		103	Y	8J	875	1929	340	50
	245/50R20		102	V	71/2J	850	1874	300	44
	255/35R20 XL		97	W	9J	730	1609	340	50
	255/45R20 XL		105	Y	81/2J	925	2039	340	50
	275/30R20 XL		97	Y	91/2J	730	1609	340	50
	275/35R20 XL		102	Y	91/2J	850	1874	340	50
	275/40R20 XL		106	Y	91/2J	950	2094	340	50
	275/45R20 XL		110	V	9J	1060	2337	340	50
275/55R20 XL		117	W	81/2J	1285	2833	340	50	
22	235/30R22 XL		90	W	81/2J	600	1323	340	50
	245/30R22 XL		92	W	81/2J	630	1389	340	50
	255/30R22 XL		95	W	9J	690	1521	340	50
	265/35R22 XL		102	W	91/2J	850	1874	340	50
	265/40R22 XL		106	V	91/2J	950	2094	340	50
	285/35R22 XL		106	W	10J	950	2094	340	50
	285/40R22 XL		110	V	10J	1060	2337	340	50
	285/45R22 XL		114	W	91/2J	1180	2601	340	50
	295/25R22 XL		97	W	101/2J	730	1609	340	50
	305/40R22 XL		114	V	11J	1180	2601	340	50
24	305/45R22 XL		118	V	10J	1320	2910	340	50
	255/30R24 XL		97	W	9J	730	1609	340	50
	275/25R24 XL		96	W	10J	710	1565	340	50
	295/35R24 XL		110	V	101/2J	1060	2337	340	50
	305/35R24 XL		112	V	11J	1120	2469	340	50
26	275/25R26 XL		98	W	10J	750	1653	340	50
	295/30R26 XL		107	W	101/2J	975	2149	340	50
	305/30R26 XL		109	W	11J	1030	2271	340	50
28	275/25R28 XL		99	W	10J	775	1709	340	50
	295/25R28 XL		103	V	101/2J	875	1929	340	50
30	275/25R30 XL		101	W	10J	825	1819	340	50

# CAPRICORN HP

PCR High Performance



### Impressive Driving Comfort

› Tread blocks with high density sipes provide driving comfort and all season performance

### Outstanding handling performance

› Five rib design is engineered to increase contact area for improved steering response and handling

› With its multi-notch design, water is swiftly channeled into four broad circumferential grooves, guaranteeing excellent traction and braking performance in wet conditions.



RIM	Size	Ply Rating	Load index	Speed Symbols	Standard Rim	Standard Load		Max Pressure	
						kg	lbs	kPa	psi
14	185/60R14		82	H	51/2J	475	1047	300	44
	185/65R14		86	H	51/2J	530	1168	300	44
	195/70R14		91	H	6J	615	1356	300	44
15	185/60R15		84	H	51/2J	500	1102	300	44
	185/65R15		88	H	51/2J	560	1235	300	44
	195/50R15 XL		86	V	6J	530	1168	340	50
	195/55R15		85	V	6J	515	1135	300	44
	195/60R15		88	H	6J	560	1235	300	44
	195/65R15		91	H	6J	615	1356	300	44
	205/65R15		94	H	6J	670	1477	300	44
	215/60R15		94	H	61/2J	670	1477	300	44
	215/65R15 XL		100	H	61/2J	800	1764	340	50
255/70R15		108	S	71/2J	1000	2205	300	44	
16	205/55R16		91	H	61/2J	615	1356	300	44
	205/60R16		92	H	6J	630	1389	300	44
	205/65R16		95	H	6J	690	1521	300	44
	215/60R16		95	H	61/2J	690	1521	300	44
	215/65R16		98	H	61/2J	750	1653	300	44
	225/55R16		95	V	7J	690	1521	300	44
	225/60R16		98	H	61/2J	750	1653	300	44
	225/65R16		100	H	61/2J	800	1764	300	44
	225/70R16 XL		107	H	61/2J	975	2149	340	50
	235/60R16		100	H	7J	800	1764	300	44
	235/65R16		103	H	7J	875	1929	300	44
	17	215/55R17		94	V	7J	670	1477	300
215/60R17			96	H	61/2J	710	1565	300	44
215/65R17			99	H	61/2J	775	1709	300	44
225/55R17			97	H	7J	730	1609	300	44
225/60R17			99	H	61/2J	775	1709	300	44
225/65R17			102	H	61/2J	850	1874	300	44
235/55R17			99	H	71/2J	775	1709	300	44
235/60R17			102	H	7J	850	1874	300	44
235/65R17			104	H	7J	900	1984	300	44
18	225/55R18		98	H	7J	750	1653	300	44
	235/65R18		106	H	7J	950	2094	300	44

**EVOLUX**

# LIGHT TRUCK & SUV TIRE



**CAPRICORN 4X4 HP**

**ROTATOR H/T**

**ROTATOR A/T**



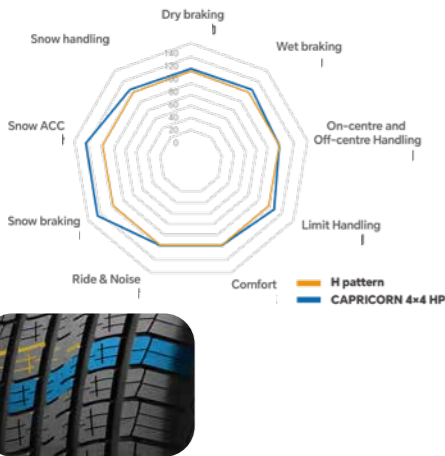
**SAGITTA X/T**

**ROTATOR R/T**

**ROTATOR M/T**

**CAPRICORN 4X4 HP**

SUV Ultra High Performance



**Excellent All Season traction & braking performance**

- › Siping design along with large amount of biting edges generates snow traction
- › The open shoulder and step shaped edges help evacuate water and slush to enhance all weather traction and steering response
- › Five rib design enhances rubber to ground contact area for better dry braking performance

**Outstanding handling performance**

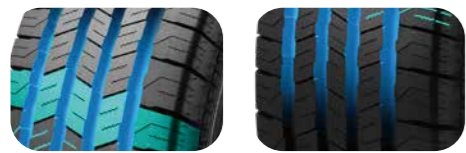
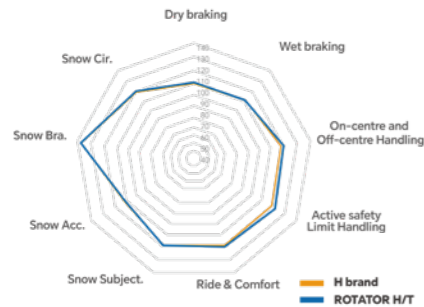
- › High hardness apex compound and apex height provide excellent steering and handling performance
- › Large shoulder blocks and continuous central rib to promote driving experience and stability

RIM	Size	Ply Rating	Load index	Speed Symbols	Standard Rim	Standard Load		Max Pressure	
						kg	lbs	kPa	psi
15	205/70R15		96	H	6J	710	1565	300	44
	235/70R15		103	H	7J	875	1929	300	44
16	205/70R16		97	V	6J	730	1609	300	44
	215/65R16 XL		102	H	61/2J	850	1874	340	50
	215/70R16		100	H	61/2J	800	1764	300	44
	225/60R16		98	H	61/2J	750	1653	300	44
	225/75R16		104	H	6J	900	1984	300	44
	235/70R16		106	H	7J	950	2094	300	44
	245/70R16 XL		111	H	7J	1090	2403	340	50
	265/70R16		112	H	8J	1120	2469	300	44
17	215/60R17		96	H	61/2J	710	1565	300	44
	225/55R17 XL		101	V	7J	825	1819	340	50
	225/60R17		99	H	61/2J	775	1709	300	44
	225/65R17		102	H	61/2J	850	1874	300	44
	235/55R17 XL		103	V	71/2J	875	1929	340	50
	235/60R17 XL		106	V	7J	950	2094	340	50
	235/65R17 XL		108	V	7J	1000	2205	340	50
	235/70R17 XL		109	T	7J	1030	2271	340	50
	245/65R17 XL		111	H	7J	1090	2403	340	50
	255/60R17		106	H	71/2J	950	2094	300	44
	255/65R17		110	H	71/2J	1060	2337	300	44
	255/70R17		112	T	71/2J	1120	2469	300	44
18	265/65R17		112	H	8J	1120	2469	300	44
	275/55R17		109	V	81/2J	1030	2271	300	44
	225/60R18		100	H	61/2J	800	1764	300	44
	235/55R18 XL		104	V	71/2J	900	1984	340	50
	235/60R18 XL		107	V	7J	975	2149	340	50
	235/65R18		106	H	7J	950	2094	300	44
	245/60R18		105	V	7J	925	2039	300	44
	255/55R18 XL		109	V	8J	1030	2271	340	50
	255/60R18 XL		112	V	71/2J	1120	2469	340	50
	255/65R18		111	H	71/2J	1090	2403	300	44
	255/70R18		113	T	71/2J	1150	2535	300	44
	265/60R18		110	H	8J	1060	2337	300	44
	265/65R18		114	H	8J	1180	2601	300	44
	265/70R18		116	T	8J	1250	2756	300	44
19	275/60R18		113	H	8J	1150	2535	300	44
	275/65R18		116	H	8J	1250	2756	300	44
	245/55R19		103	V	71/2J	875	1929	300	44
	255/50R19 XL		107	W	8J	975	2149	340	50
20	255/55R19 XL		111	V	8J	1090	2403	340	50
	255/60R19		109	H	71/2J	1030	2271	300	44
	255/50R20 XL		109	V	8J	1030	2271	340	50
275/60R20		115	T	8J	1215	2679	300	44	



# ROTATOR H/T

Highway-Terrain



### Blanced dry, wet and snow performance

- › Wide circumferential groove design and optimal void-to-fill ratio balance wet and wear performance
- › High density linear and zigzag siping design improves handling and irregular wear
- › The new generation of modified SSBR tread formula significantly improves the fuel economy and wet grip of the tire, and greatly improves the driving safety in rainy days

### Quiet and comfortable ride

- › Multiple variable pitch design optimizes pitch ratio and alignment to achieve low noise level



# ROTATOR H/T

RIM	Size	Ply Rating	Load index	Speed Symbols	Standard Rim	Standard Load		Max Pressure	
						kg	lbs	kPa	psi
15	235/75R15 XL		109	T	61/2J	1030	2271	340	50
	31X10.50R15LT	6PR	109	R	81/2J	1030	2270	350	50
16	225/70R16		103	T	61/2J	875	1929	300	44
	245/75R16		111	T	7J	1090	2403	300	44
	255/70R16		111	T	71/2J	1090	2403	300	44
	265/75R16		116	T	71/2J	1250	2756	300	44
	LT215/85R16	10PR	115/112	S	6J	D 1120 S 1215	D 2470 S 2680	550	80
	LT225/75R16	10PR	115/112	S	6J	D 1120 S 1215	D 2470 S 2680	550	80
	LT235/85R16	10PR	120/116	R	61/2J	D 1260 S 1380	D 2778 S 3042	550	80
	LT245/75R16	10PR	120/116	R	7J	D 1260 S 1380	D 2778 S 3042	550	80
17	LT265/75R16	10PR	123/120	R	71/2J	D 1400 S 1550	D 3085 S 3415	550	80
	235/65R17		104	T	7J	900	1984	300	44
	245/70R17		110	T	7J	1060	2337	300	44
	265/65R17		112	T	8J	1120	2469	300	44
	265/70R17		115	T	8J	1215	2679	300	44
	275/65R17		115	S	8J	1215	2679	300	44
	285/65R17		116	S	81/2J	1250	2756	300	44
	LT235/80R17	10PR	120/117	R	61/2J	D 1285 S 1400	D 2835 S 3085	550	80
18	LT245/75R17	10PR	121/118	R	7J	D 1320 S 1450	D 2910 S 3195	550	80
	LT265/70R17	10PR	121/118	R	8J	D 1320 S 1450	D 2910 S 3195	550	80
	LT265/70R18	10PR	124/121	R	8J	D 1450 S 1600	D 3195 S 3525	550	80
20	LT275/65R18	10PR	123/120	S	8J	D 1285 S 1550	D 2835 S 3415	550	80
	LT275/70R18	10PR	125/122	S	8J	D 1400 S 1650	D 3085 S 3640	550	80
20	265/50R20 XL		111	H	81/2J	1090	2403	340	50
	275/55R20 XL		117	T	81/2J	1285	2833	340	50

# ROTATOR A/T

All-Terrain



### Extra sidewall protection against cuts, impacts, and punctures

- › Lugs featured with chamfered edges constrain the deformation when touching the ground, thus enhances the abnormal wear and tear resistance
- › Buttress design from extended shoulder improves traction capability especially on soft ground
- › By incorporating self-crystallizing raw rubber and low-molecular plasticizers for self-reinforcement, along with high-strength reinforcing particles, the tear resistance of the tread block compound is greatly enhanced

### Perfect grip on snow surfaces

- › High-density sipes offer excellent handling and snow/wet traction
- › Advanced polymers ensure the rubber compound remains flexible and elastic at low temperatures, while small-molecule plasticizers work synergistically to maintain superior viscoelasticity in cold environments. Nano-filler particles further enhance performance by breaking through the microscopic water film on icy and snowy surfaces, delivering exceptional traction in winter conditions



RIM	Size	Ply Rating	Load index	Speed Symbols	Standard Rim	Standard Load		Max Pressure	
						kg	lbs	kPa	psi
15	235/75R15 XL OWL		109	T	61/2J	1030	2271	340	50
	265/70R15 OWL		112	T	8J	1120	2469	300	44
	LT235/75R15 OWL	6PR	104/101	R	61/2J	D 825 S 900	D 1820 S 1985	350	50
	30X9.50R15LT OWL	6PR	104	S	71/2J	900	1985	350	50
	31X10.50R15LT OWL	6PR	109	R	81/2J	1030	2270	350	50
16	235/70R16 OWL		106	T	7J	950	2094	300	44
	245/70R16 XL OWL		111	T	7J	1090	2403	340	50
	245/75R16 OWL		111	T	7J	1090	2403	300	44
	255/70R16 OWL		111	S	71/2J	1090	2403	300	44
	265/70R16 OWL		112	T	8J	1120	2469	300	44
	265/75R16 OWL		116	T	71/2J	1250	2756	300	44
	LT215/85R16	10PR	115/112	Q	6J	D 1120 S 1215	D 2470 S 2680	550	80
	LT225/75R16 OWL	10PR	115/112	Q	6J	D 1120 S 1215	D 2470 S 2680	550	80
	LT235/85R16 OWL	10PR	120/116	S	61/2J	D 1260 S 1380	D 2778 S 3042	550	80
	LT245/75R16 OWL	10PR	120/116	Q	7J	D 1260 S 1380	D 2778 S 3042	550	80
	LT265/75R16 OWL	10PR	123/120	R	71/2J	D 1400 S 1550	D 3085 S 3415	550	80
17	LT285/75R16 OWL	10PR	126/123	R	8J	D 1550 S 1700	D 3415 S 3750	550	80
	LT305/70R16 OWL	10PR	124/121	R	9J	D 1450 S 1600	D 3195 S 3525	450	65
	245/65R17 XL OWL		111	T	7J	1090	2403	340	50
	245/70R17 OWL		110	S	7J	1060	2337	300	44
	265/65R17		112	T	8J	1120	2469	300	44
	265/70R17 OWL		115	T	8J	1215	2679	300	44
	285/70R17 OWL		116	T	81/2J	1250	2756	300	44
	LT235/80R17 OWL	10PR	120/117	R	61/2J	D 1285 S 1400	D 2835 S 3085	550	80
	LT245/75R17 OWL	10PR	121/118	R	7J	D 1320 S 1450	D 2910 S 3195	550	80
	LT265/70R17 OWL	10PR	121/118	R	8J	D 1320 S 1450	D 2910 S 3195	550	80
	LT285/70R17 OWL	8PR	121/118	S	81/2J	D 1320 S 1450	D 2910 S 3195	450	65
18	LT285/70R17 OWL	10PR	121/118	S	81/2J	D 1320 S 1450	D 2910 S 3195	450	65
	LT305/70R17 OWL	8PR	119/116	R	9J	D 1250 S 1360	D 2755 S 3000	350	50
	255/70R18 OWL		113	S	71/2J	1150	2535	300	44
	265/70R18 OWL		116	T	8J	1250	2756	300	44
	275/65R18 OWL		116	T	8J	1250	2756	300	44
	LT265/65R18 OWL	10PR	122/119	Q	8J	D 1360 S 1500	D 3000 S 3305	550	80
	LT265/70R18 OWL	10PR	124/121	S	8J	D 1450 S 1600	D 3195 S 3525	550	80
	LT275/65R18 OWL	10PR	123/120	S	8J	D 1400 S 1550	D 3085 S 3415	550	80
	LT275/70R18 OWL	10PR	125/122	S	8J	D 1500 S 1650	D 3305 S 3640	550	80
	LT305/60R18 OWL	10PR	121/118	R	9J	D 1320 S 1450	D 2910 S 3195	450	65
	20	275/55R20 OWL		113	S	81/2J	1150	2535	300
275/60R20 OWL			115	T	8J	1215	2679	300	44
35X12.50R20LT OWL		10PR	121	Q	10J	1450	3195	450	65
LT275/55R20 OWL		10PR	120/117	Q	81/2J	D 1285 S 1400	D 2835 S 3085	550	80
LT275/60R20 OWL		10PR	123/120	Q	8J	D 1400 S 1550	D 3085 S 3415	550	80
LT275/65R20 OWL		10PR	126/123	S	8J	D 1550 S 1700	D 3415 S 3750	550	80
LT285/55R20		10PR	122/119	S	9J	D 1360 S 1500	D 3000 S 3305	550	80
LT305/55R20 OWL	10PR	121/118	R	91/2J	D 1320 S 1450	D 2910 S 3195	450	65	



# SAGITTA X/T

Extreme All-Terrain

# SAGITTA X/T

RIM	Size	Ply Rating	Load index	Speed Symbols	Standard Rim	Standard Load		Max Pressure	
						kg	lbs	kPa	psi
16	265/75R16		116	T	7 1/2J	1250	2756	300	44
	LT245/75R16	10PR	120/116	Q	7J	S 1400 D 1260	S 3085 D 2778	550	80
	LT265/75R16	10PR	123/120	Q	7 1/2J	S 1550 D 1400	S 3415 D 3085	550	80
	LT285/75R16	10PR	126/123	Q	8J	S 1700 D 1550	S 3750 D 3415	550	80
17	265/70R17		115	T	8J	1215	2679	300	44
	LT235/80R17	10PR	120/117	Q	6 1/2J	S 1400 D 1285	S 3085 D 2835	550	80
	LT245/70R17	10PR	119/116	S	7J	S 1360 D 1250	S 3000 D 2755	550	80
	LT245/75R17	10PR	121/118	Q	7J	S 1450 D 1320	S 3195 D 2910	550	80
	LT265/70R17	10PR	123/120	Q	8J	S 1550 D 1400	S 3415 D 3085	550	80
	LT285/70R17	8PR	122/119	Q	8 1/2J	S 1500 D 1360	S 3305 D 3000	450	65
18	35X12.50R17LT	10PR	125	R	10J	1650	3640	450	65
	275/65R18	XL	116	T	8J	1250	2756	340	50
	LT265/70R18	10PR	124/121	Q	8J	S 1600 D 1450	S 3525 D 3195	550	80
	LT275/65R18	10PR	123/120	Q	8J	S 1550 D 1400	S 3415 D 3085	550	80
	LT275/70R18	10PR	125/122	Q	8J	S 1650 D 1500	S 3640 D 3305	550	80
	LT285/65R18	10PR	125/122	Q	8 1/2J	S 1650 D 1500	S 3640 D 3305	550	80
	33X12.50R18LT	12PR	122	R	10J	1500	3305	550	80
20	35X12.50R18LT	10PR	123	R	10J	1550	3415	450	65
	275/55R20	XL	117	T	8 1/2J	1285	2833	340	50
	275/60R20		115	R	8J	1215	2679	300	44
	LT265/60R20	10PR	121/118	Q	8J	S 1450 D 1320	S 3195 D 2910	550	80
	LT275/55R20	10PR	120/117	S	8 1/2J	S 1400 D 1285	S 3085 D 2835	550	80
	LT275/60R20	10PR	123/120	Q	8J	S 1550 D 1400	S 3415 D 3085	550	80
	LT275/65R20	10PR	126/123	Q	8J	S 1700 D 1550	S 3750 D 3415	550	80
	LT285/55R20	10PR	122/119	S	9J	S 1500 D 1360	S 3305 D 3000	550	80
	33X12.50R20LT	12PR	119	R	10J	1360	3000	550	80
	35X12.50R20LT	12PR	125	Q	10J	1650	3640	550	80
22	33X12.50R22LT	12PR	114	R	10 1/2J	1180	2600	550	80
	35X12.50R22LT	12PR	121	R	10J	1450	3195	550	80



**Excellent handling performance, Strong mud/rock traction**

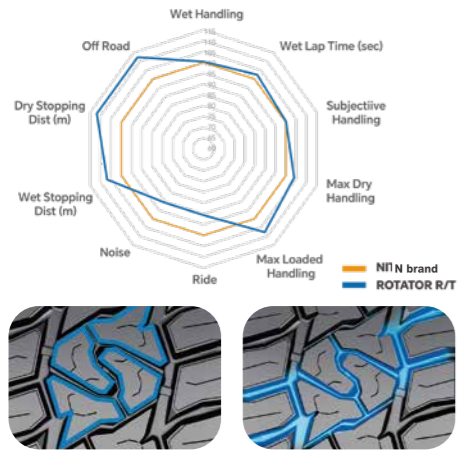
- › High floatation; High load-carrying capacity
- › Aggressive tread pattern and sidewall design
- › The open shoulder grooves and large trench volume ,improve the drainage of mud under bad road conditions





# ROTATOR R/T

Rugged-Terrain



## Outstanding off-road traction

- › Staggered angular blocks and ledges between lugs capable of removing sticky clods enhance off-road grip on muddy and sandy surfaces
- › Wide lateral zigzag grooves ensure superb off-road traction in the whole lifetime

## Durable construction

- › High-strength three-ply carcass design along with sidewall adopting E-L Max patented technology provides impact and puncture resistance
- › High strength cord protect sidewall from puncture of rugged rock, also can enhancing driving and riding safety



# ROTATOR R/T

RIM	Size	Ply Rating	Load index	Speed Symbols	Standard Rim	Standard Load		Max Pressure	
						kg	lbs	kPa	psi
15	31X10.50R15LT	6PR	109	Q	8 1/2J	1030	2270	350	51
16	LT235/85R16	12PR	123/120	Q	6 1/2J	D 1400 S 1550	D 3085 S 3415	650	94
	LT245/75R16	10PR	120/116	Q	7J	D 1250 S 1400	D 2755 S 3085	550	80
	LT265/75R16	10PR	123/120	Q	7 1/2J	D 1400 S 1550	D 3085 S 3415	550	80
	LT285/75R16	10PR	126/123	Q	8J	D 1550 S 1700	D 3415 S 3750	550	80
	LT305/70R16	12PR	128/125	Q	9J	D 1650 S 1800	D 3640 S 3970	450	65
17	LT315/75R16	10PR	127/124	Q	8 1/2J	D 1600 S 1750	D 3525 S 3860	450	65
	33X12.50R17LT	12PR	121	Q	10J	1450	3195	550	80
	35X12.50R17LT	12PR	121	Q	10J	1450	3195	550	80
	37X12.50R17LT	12PR	121	Q	10J	1450	3195	550	80
	LT235/80R17	10PR	120/117	Q	6 1/2J	D 1285 S 1400	D 2835 S 3085	550	80
	LT245/70R17	10PR	119/116	Q	7J	D 1250 S 1360	D 2755 S 3000	550	80
	LT255/80R17	10PR	121/118	Q	7J	D 1320 S 1450	D 2910 S 3195	550	80
	LT265/70R17	10PR	121/118	Q	8J	D 1320 S 1450	D 2910 S 3195	550	80
	LT285/70R17	10PR	121/118	Q	8 1/2J	D 1320 S 1450	D 2910 S 3195	550	80
	LT285/75R17	10PR	121/118	Q	8J	D 1320 S 1450	D 2910 S 3195	550	80
18	LT295/70R17	10PR	121/118	Q	8 1/2J	D 1320 S 1450	D 2910 S 3195	550	80
	LT305/70R17	10PR	121/118	Q	9J	D 1320 S 1450	D 2910 S 3195	450	65
	LT315/70R17	12PR	121/118	Q	9 1/2J	D 1320 S 1450	D 2910 S 3195	550	80
	33X12.50R18LT	12PR	122	Q	10J	1500	3305	550	80
	35X12.50R18LT	12PR	128	Q	10J	1800	3970	550	80
	37X12.50R18LT	12PR	128	Q	10J	1800	3970	550	80
	37X13.50R18LT	12PR	128	Q	11J	1800	3970	550	80
	LT275/65R18	10PR	123/120	Q	8J	D 1400 S 1550	D 3085 S 3415	550	80
	LT275/70R18	10PR	125/122	Q	8J	D 1500 S 1650	D 3305 S 3640	550	80
	LT285/60R18	10PR	122/119	Q	8 1/2J	D 1360 S 1500	D 3000 S 3305	550	80
LT285/65R18	10PR	125/122	Q	8 1/2J	D 1500 S 1650	D 3305 S 3640	550	80	

# ROTATOR R/T

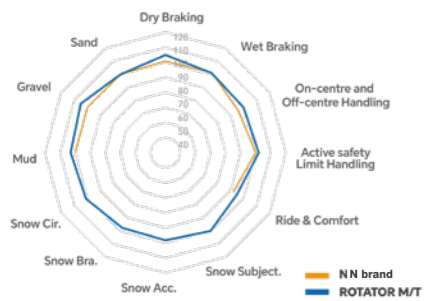
RIM	Size	Ply Rating	Load index	Speed Symbols	Standard Rim	Standard Load		Max Pressure	
						kg	lbs	kPa	psi
18	LT285/75R18	10PR	129/126	Q	8J	D 1700 S 1850	D 3750 S 4080	550	80
	LT295/70R18	10PR	129/126	Q	8 1/2J	D 1700 S 1850	D 3750 S 4080	550	80
	LT325/65R18	10PR	127/124	Q	9 1/2J	D 1600 S 1750	D 3525 S 3860	450	65
20	33X12.50R20LT	12PR	119	Q	10J	1360	3000	550	80
	35X11.50R20LT	10PR	124	Q	9J	1600	3525	550	80
	35X12.50R20LT	12PR	125	Q	10J	1650	3640	550	80
	35X13.50R20LT	12PR	126	Q	11J	1700	3750	550	80
	37X12.50R20LT	12PR	128	Q	10J	1800	3970	550	80
	37X13.50R20LT	12PR	128	Q	11J	1800	3970	550	80
	38X13.50R20LT	10PR	128	Q	11J	1800	3970	450	65
	LT265/60R20	10PR	121/118	Q	8J	D 1320 S 1450	D 2910 S 3195	550	80
	LT275/55R20	12PR	122/119	Q	8 1/2J	D 1360 S 1500	D 3000 S 3305	650	95
	LT275/55R20	10PR	120/117	R	8 1/2J	D 1285 S 1400	D 2835 S 3085	550	80
	LT275/60R20	10PR	123/120	Q	8J	D 1400 S 1550	D 3085 S 3415	550	80
	LT275/65R20	12PR	128/125	R	8J	D 1650 S 1800	D 3640 S 3970	650	95
	LT285/55R20	12PR	124/121	S	9J	D 1450 S 1600	D 3195 S 3525	650	95
	LT285/55R20	8PR	117/114	Q	9J	D 1400 S 1180	D 3085 S 2600	450	65
	LT285/60R20	10PR	125/122	Q	8 1/2J	D 1500 S 1650	D 3305 S 3640	550	80
	LT285/65R20	10PR	127/124	Q	8 1/2J	D 1600 S 1750	D 3525 S 3860	550	80
	LT295/55R20	10PR	123/120	Q	9 1/2J	D 1400 S 1550	D 3085 S 3415	550	80
	LT295/60R20	10PR	126/123	Q	8 1/2J	D 1550 S 1700	D 3415 S 3750	550	80
LT295/65R20	10PR	129/126	Q	8 1/2J	D 1700 S 1850	D 3750 S 4080	550	80	
LT305/55R20	12PR	125/122	S	9 1/2J	D 1500 S 1650	D 3305 S 3640	550	80	
LT315/60R20	10PR	125/122	Q	9 1/2J	D 1500 S 1650	D 3305 S 3640	450	65	
LT325/60R20	10PR	126/123	Q	9 1/2J	D 1550 S 1700	D 3415 S 3750	450	65	
22	33X12.50R22LT	12PR	114	Q	10J	1180	2600	550	80
	35X12.50R22LT	12PR	121	Q	10J	1450	3195	550	80

# ROTATOR R/T

RIM	Size	Ply Rating	Load index	Speed Symbols	Standard Rim	Standard Load		Max Pressure	
						kg	lbs	kPa	psi
22	37X12.50R22LT	12PR	127	Q	10J	1750	3860	550	80
	37X13.50R22LT	12PR	128	Q	11J	1800	3970	550	80
	38X13.50R22LT	12PR	128	Q	11J	1800	3970	550	80
	38X15.50R22LT	10PR	128	Q	12 1/2J	1800	3970	450	65
	LT295/50R22	10PR	122/119	Q	9 1/2J	D 1360 S 1500	D 3000 S 3305	550	80
	LT295/55R22	10PR	125/122	Q	9 1/2J	D 1500 S 1650	D 3305 S 3640	550	80
24	LT325/50R22	12PR	127	Q	10J	1750	3860	550	80
	33X12.50R24LT	12PR	106	Q	11 1/2J	950	2095	550	80
	33X13.50R24LT	12PR	110	Q	11J	1060	2335	550	80
	35X12.50R24LT	12PR	116	Q	10 1/2J	1250	2755	550	80
	35X13.50R24LT	12PR	116	Q	12J	1250	2755	550	80
	37X13.50R24LT	12PR	124	Q	11J	1600	3525	550	80
26	38X15.50R24LT	12PR	128	Q	12 1/2J	1800	3970	550	80
	35X13.50R26LT	12PR	111	Q	11J	1090	2405	550	80
	37X13.50R26LT	12PR	117	Q	11J	1285	2835	450	65

# ROTATOR M/T

Mud-Terrain



### Good cut & chip resistance in mud-terrain

- › Slanted biting edges prevent stone from sticking at the bottom of grooves
- › The high strength construction and innovative tread formula improve tire robustness in the rugged terrain with gravel
- › Buttress design from extended shoulder and high strength cord ply protect sidewall from puncture on rugged road surface

### Great mud clearance capabilities with maximized off-road traction

- › Patented continuous groove design and optimized void-to-fill ratio ensure sufficient mud clearance capability for higher traction



RIM	Size	Ply Rating	Load index	Speed Symbols	Standard Rim	Standard Load		Max Pressure	
						kg	lbs	kPa	psi
15	LT215/75R15	6PR	100/97	Q	6J	D 730 S 800	D 1610 S 1765	350	50
	LT235/75R15	6PR	104/101	Q	61/2J	D 825 S 900	D 1820 S 1985	350	50
	30X9.50R15LT	6PR	104	Q	71/2J	900	1985	350	50
	31*10.50R15LT	6PR	109	Q	81/2J	1030	2270	350	50
	33*12.50R15LT	6PR	108	Q	10J	1000	2205	250	35
16	LT225/75R16	8PR	110/107	Q	6J	D 975 S 1060	D 2150 S 2335	450	65
	LT235/85R16 OWL	10PR	120/116	S	61/2J	D 1260 S 1380	D 2778 S 3042	550	80
	LT245/75R16	10PR	120/116	Q	7J	D 1260 S 1380	D 2778 S 3042	550	80
	LT265/70R16	6PR	110/107	Q	8J	D 975 S 1060	D 2150 S 2335	350	50
	LT265/75R16	10PR	123/120	Q	7 1/2J	D 1400 S 1550	D 3085 S 3415	550	80
	LT285/75R16	10PR	126/123	Q	8J	D 1550 S 1700	D 3415 S 3750	550	80
	LT305/70R16	10PR	124/121	Q	9J	D 1450 S 1600	D 3195 S 3525	450	65
	LT315/75R16	10PR	127/124	Q	8 1/2J	D 1600 S 1750	D 3525 S 3860	450	65
17	LT235/80R17	10PR	120/117	Q	6 1/2J	D 1285 S 1400	D 2835 S 3085	550	80
	LT265/70R17	10PR	121/118	Q	8J	D 1320 S 1450	D 2910 S 3195	550	80
	LT285/70R17	10PR	121/118	Q	8 1/2J	D 1320 S 1450	D 2910 S 3195	550	80
	LT305/70R17	8PR	119/116	Q	9J	D 1250 S 1360	D 2755 S 3000	350	50
	33X12.50R17LT	10PR	120	Q	10J	1400	3085	450	65
	35X12.50R17LT	10PR	121	Q	10J	1450	3195	450	65
18	37X13.50R17LT	10PR	121	Q	10J	1450	3195	450	65
	LT275/70R18	10PR	125/122	Q	8J	D 1500 S 1650	D 3305 S 3640	550	80
	33X12.50R18LT	10PR	118	Q	10J	1320	2910	450	65
	33X12.50R18LT	12PR	122	Q	10J	1500	3305	550	80
	35X12.50R18LT	10PR	123	Q	10J	1550	3415	450	65
	LT275/55R20	10PR	120/117	Q	81/2J	D 1285 S 1400	D 2835 S 3085	550	80
	LT285/55R20	10PR	122/119	Q	9J	D 1360 S 1500	D 3000 S 3305	550	80
	LT285/65R20	10PR	127/124	Q	81/2J	D 1600 S 1750	D 3525 S 3860	550	80
	LT305/55R20	10PR	121/118	Q	91/2J	D 1320 S 1450	D 2910 S 3195	450	65
	33X12.50R20LT	10PR	114	Q	10J	1180	2600	450	65
	33X12.50R20LT	12PR	119	Q	10J	1360	3000	550	80
	35X12.50R20LT	10PR	121	Q	10J	1450	3195	450	65
35X12.50R20LT	12PR	125	Q	10J	1650	3640	550	80	
37X13.50R20LT	10PR	127	Q	11J	1750	3860	450	65	
37X13.50R20LT	12PR	128	Q	11J	1800	3970	550	80	
22	33X12.50R22LT	10PR	109	Q	10J	1030	2270	450	65
	33X12.50R22LT	12PR	114	Q	10J	1180	2600	550	80
	35X12.50R22LT	10PR	117	Q	10J	1285	2835	450	65
	35X12.50R22LT	12PR	121	Q	10J	1450	3195	550	80
	37X13.50R22LT	10PR	123	Q	11J	1550	3415	450	65
	37X13.50R22LT	12PR	128	Q	11J	1800	3970	550	80
24	37X13.50R24LT	10PR	120	Q	11J	1400	3085	450	65
	37X13.50R24LT	12PR	124	Q	11J	1600	3525	550	80
26	37X13.50R26LT	10PR	114	Q	11J	1180	2600	450	65

**Warranty Eligibility**

This limited warranty applies to all the qualified replacement market Passenger and Light Truck Tires produced by Shandong Linglong Tyre Co., Ltd. and all its subsidiaries. This Limited Warranty only applies to the original purchaser, and the tire has a complete brand identification, DOT or barcode. and it is valid if all of the following apply:

- The tires are manufactured after January 1, 2025, and are shipped to North America for sale and use.
- The tire fails due to the workmanship or materials.
- The tire shall not exceed the warranty period, and the remaining pattern shall not be less than TWI.

**What is warranted and for how long**

If the tire covered by this limited warranty become unusable due to a workmanship or material related condition during its usable tread depth is more than TWI, LingLong will provide compensation on the following conditions:

- The warranty period is 6 years from the date of purchase, or 7 years from the date of production, whichever comes first, and the remaining pattern depth is not less than TWI.
- If the tire fails due to manufacturing reasons and meets the warranty scope and conditions, the remaining pattern depth exceeds TWI, the new tire of the same specification will be covered free of charge.

**What is not covered**

1. Road hazard injuries or damages caused by obstacles or debris, such as cuts, punctures (whether repairable or not), snags, bruises, tears, abrasions or impact breaks.
2. Improper repairs or repairs that have failed.
3. Improper inflation or other maintenance abuses.
4. Improper mounting/dismounting.
5. Mechanical irregularities such as bent wheel assemblies, misalignment worn or faulty components.
6. Accident, corrosion, tire alteration, vandalism, fire, theft or damages cause by nature.
7. Damage from over-inflation or under-inflation, overloading, defective vehicle mechanical conditions.
8. Non-racing or off-road tires that are misused or abused for racing or off-road purposes.
9. Ozone or weather cracking or other abuse, misuse, tire alteration, run flat.
10. Tire which D.O.T identification number and/or brand name removed intentionally.
11. Tires that have been modified after leaving the factory, such as fillers, sealants, balancing substances and external tire treatments or materials of any kind. If the added material is the cause of a failure, a tire will not be accepted for warranty claim.
12. Abnormal tread wear resulting from improper installation, wheel misalignment, tire/wheel assembly imbalance, etc.
13. Vehicles or tires operated in excess of the rated Work Capacity Factor.
14. Additional monetary loss, such as damage of the vehicle or time, etc.

**Road Hazard Warranty**

If a tire is rendered unserviceable due to a non-repairable road hazard, it must meet following guidelines:

- Tire must be within one year from date of purchase. The tire purchase certificate must be provided.
- For qualifying tires, 50% of the claim will be given based on the total of the tire FOB price and freight. Calculation method: Compensation =(FOB+Freight)\*50%

**Treadwear Mileage Warranty**

If an eligible tire evenly wears out before the warranty miles under the normal passenger use, and within the Limited Warranty time period, if the tire pattern is worn to TWI and does not reach the warranty mileage, the unused service will be subsidized on a pro-rata basis to purchase a new tire. To make a claim, installation record, tire rotation record, and the removal record must all be forwarded with the claimed tire.

- Tires must be rotated every 6,000 to 8,000 miles or less.
- This warranty is not applicable to original equipment tires.
- Treadwear Mileage Warranty only applies to the original purchaser/owner of the tires.
- Mileage Warranty does not apply to tires used in commercial applications, including, but not limited to: law enforcement, taxi services, courier services ect.
- Tires must be evenly worn, with a depth difference of less than 2/32nds across the tread.
- Mileage warranty product list:

NO.	Brand	Pattern	Mileage Warranty(miles)
1	EVOLUXX	CAPRICORN HP	60,000
2	EVOLUXX	CAPRICORN UHP	50,000
3	EVOLUXX	CAPRICORN 4X4 HP	60,000
4	EVOLUXX	ROTATOR H/T	65,000
5	EVOLUXX	ROTATOR A/T	65,000
6	EVOLUXX	ROTATOR R/T	50,000
7	EVOLUXX	SAGITTA X/T	55,000

**90-DAY Customer Satisfaction Trial**

LingLong offers a 90 Day Free Trial as the following :

- Applies Passenger Tires (Excluding tires for commercial and racing purposes, etc.), Light Truck tires not included.
- This satisfaction guarantee applies to the original purchaser who purchases at least four new passenger tires at one-time and not to the tires provided under this guarantee.
- Not applicable to tires that are intentionally damaged or damaged due to improper use.
- How do you return your tires during the trial period?
- Within the authorized time frame from the date of purchase, you must return your tires to the tire dealer where you purchased your tires.
- Present the original sales receipt and proof-of-purchase.
- Truthfully state reason for dissatisfaction (such as appearance,driving, etc.).

**To make a claim under this limited warranty**

1. Present your tires and the original purchase receipt to point of purchase or any the Company’s dealer.
2. Complete and sign the Claim Adjustment form provided, keep a copy for your records and leave the tire with the dealer to process the warranty claim.

**Owner’s obligation**

1. At the time of purchase, tires must be properly installed with recommended inflation and balanced. Observe rotation and alignment regularly according to recommendations.
2. Refer to any authorized the Company’s dealer or point of purchase for adjustment claim.
3. Owner is responsible for service charges and applicable taxes.
4. Submit a copy of the original purchase receipt to support the adjustment claim.

**Tire safety and maintenance**

Tire failure can result in serious damage and/or personal injury. To reduce these risks we recommend the following:

1. Maintain proper inflation, do not under or over inflate. Always maintain inflation according to the vehicle manufacturer’s or the Company’s recommendations.
2. Wheel alignment and balancing should be checked at regular intervals.
3. Do not overload, refer to load carrying capacity information molded on tire sidewall.
4. Avoid spinning, driving over curbs, potholes, obstacles and edges of pavement.
5. Never drive with smooth(bald) tires. By law, tires must be replaced when worn to TWI (tread wear indicator).
6. Check your tires frequently for any damage such as scrapes, cuts, foreign objects, separations or bulges. If damaged replace it with spare and refer to an authorized dealer.
7. Do not drive in excess of permitted speed limits and beyond the maximum specified by tire.
8. To achieve proper wear and optimize tread life, rotate your tires at least every 6000 miles.

**Exclusions, Limitations, and Legal Rights**

No representative or dealer is authorized to make any representation, promise, or agreement on behalf of Linglong, except as expressly stated in this document. Any tire, regardless of construction quality, may fail in service or otherwise become unserviceable due to conditions beyond the manufacturer’s control. This warranty does not constitute a representation that tire failure will not occur under any circumstances.

**DISCLAIMER:** This warranty is provided in lieu of all other warranties and representations, express or implied. Linglong expressly disclaims any and all implied warranties, including but not limited to the implied warranties of merchantability and fitness for a particular purpose. No other warranty or representation of any kind shall be deemed to exist or arise by operation of law.

**LIMITATION OF DAMAGES:** Under no circumstances shall Linglong be liable for any indirect, special, incidental, consequential, or punitive damages, including but not limited to loss of profits, business interruption, loss of reputation or goodwill, or costs related to replacement transportation or other associated expenses. Certain states or provinces do not allow the exclusion or limitation of incidental or consequential damages; therefore, some portions of this limitation may not be enforceable in specific jurisdictions.

This warranty sets forth specific legal obligations, and additional rights may apply depending on the governing state or provincial law.