

CATALOG



Tires | Lubricants | Batteries | Tools and supplies | Car care products
Equipment | Brake pads | Filters | Car accessories | Wiper blades

The ROVELO logo is displayed in a white rounded rectangle. It consists of the word "ROVELO" in a bold, green, sans-serif font, followed by a small green leaf-like icon.

Since 1960

81 88 81 81

05 40 00 08

CUSTOMER SERVICE:

81 81 81 11

SECTOR 32 - STREET 49
CHOUEIFAT - LEBANON

INFO@SAKA.COM.LB

WWW.SAKA.COM.LB

**TIRE
MAINTENANCE
AND SAFETY**

Tire maintenance can help to improve the performance and extend the life of your tires. More importantly, taking just a few minutes a month to inspect your tires can help you to avoid tire failures. Some of the key aspects of preventative maintenance include:

1. Inflation Pressure - It's important to maintain the correct inflation pressure in your tires as under-inflation or over-inflation may lead to a tire failure. The correct inflation pressure of your tires is specified by the vehicle manufacturer and is typically shown on the vehicle door ledge or in the owner's manual.

Tires may lose air over time due to the permeability of rubber so it is important to check your tire pressure regularly, at least once a month including the spare. Ensure to check the pressure when the tires are cold (i.e. have not been driven on).

2. Loading - Do not overload your vehicle. Overloading creates excessive stress leading to heat generation and can eventually lead to a tire failure. Please check the tire placard or vehicle owner's manual for the maximum recommended load for your vehicle.

SPEED RATING

The speed symbol indicates the maximum speed rating at which a tire can carry a load corresponding to its Load Index under specific service conditions.

** For tires with speed symbols W and Y, "ZR" may or may not appear within the size designation. For tires with a maximum speed above 186 MPH, a "ZR" must appear in the size designation.

Examples of similar size markings, with and without service descriptions, and showing different maximum speeds are shown.

Speed Rating	Max. Speed	Speed Rating	Max. Speed
F	80 km/h	R	170 km/h
G	90 km/h	S	180 km/h
J	100 km/h	T	190 km/h
K	110 km/h	U	200 km/h
L	120 km/h	H	210 km/h
M	130 km/h	V	240 km/h
N	140 km/h	W	270 km/h
P	150 km/h	Y	300 km/h
Q	160 km/h	ZR	>240 km/h

TABLE OF CONTENTS

HIGH PERFORMANCE TIRE

RHP-A68 03
 RHP-780 07
 RHP-780P 09
 RHP-778 11

ULTRA HIGH PERFORMANCE TIRE

RPX-988 15
 SPORT A1 19

COMMERCIAL TIRE

RCM-836 23
 RCM-X+ 25

ON/OFF ROAD LIGHT TRUCK & SUV TIRE

ROAD QUEST HT 27
 MONTARE HT RV08 29
 ROAD QUEST AT 31
 RIDGETRAK AT 33
 ROAD QUEST RMT810 35

FOUR SEASONS TIRE

ALL WEATHER R4S 37

WINTER TIRE

RWS-677 Studdable Winter Tire 39
 RWT-768 Studless Winter Tire 43

HIGH PERFORMANCE TIRE

ROVELO
TIRE



HIGH PERFORMANCE TIRE

RHP-A68



Asymmetrical Tread Pattern
Provides excellent cornering stability while maintaining superior wet traction.



Tread Sipes
Drastically improve braking in all weather conditions.



Reinforced Shoulder Ribs
Engineered for high-speed cornering while extending tread life.

	SIZE	L.I./S.R.	O.D.mm	S.W. mm	T.D.mm	R.W.inch	UTQG
12	155/70R12	73T	523	157	7.4	4.50B	460/A/B
13	155/65R13	73T	532	157	7.4	4.50B	460/A/B
	155/70R13	75T	548	157	7.4	4.50B	460/A/B
	165/60R13	73H	528	170	7.8	5.00B	420/A/A
	165/70R13	79T	562	170	7.8	5.00B	460/A/B
	175/70R13	82T	576	177	7.8	5.00B	460/A/B
	185/70R13	86T	590	189	8.0	5.50B	460/A/B
	165/55R14	72V	538	170	7.8	5J	420/A/A
	165/60R14	75H	554	170	7.8	5J	420/A/A
	14	165/65R14	79T	570	170	7.8	5J
165/70R14		81T	588	170	7.8	5J	460/A/B
175/65R14		82H	584	177	7.8	5J	420/A/A
175/70R14		84T	602	177	7.8	5J	460/A/B
185/60R14		82H	578	189	8.0	5 1/2J	420/A/A
185/65R14		86H	596	189	8.0	5 1/2J	420/A/A
185/70R14		88H	616	189	8.0	5 1/2J	460/A/B
195/65R14		89H	610	201	8.0	6J	420/A/A
195/70R14		91H	630	201	8.0	6J	460/A/B
205/70R14		95T	644	209	8.0	6J	460/A/B

HIGH PERFORMANCE TIRE

ROVELO
TIRE



	SIZE	L.I./S.R.	O.D.mm	S.W. mm	T.D.mm	R.W.inch	UTQG
15	165/50R15	72V	547	170	7.8	5J	420/A/A
	175/50R15	75V	557	182	7.8	5 1/2J	420/A/A
	185/55R15	82H	585	194	8.0	6J	420/A/A
	185/60R15	84H	603	189	8.0	5 1/2J	420/A/A
	185/65R15	88H	621	189	8.0	5 1/2J	420/A/A
	195/50R15	82H	577	201	8.0	6J	420/A/A
	195/55R15	85H	595	201	8.0	6J	420/A/A
	195/60R15	88V	615	201	8.0	6J	420/A/A
	195/65R15	91H	635	201	8.0	6J	420/A/A
	205/60R15	91V	627	209	8.0	6J	420/A/A
	205/65R15	94V	647	209	8.0	6J	420/A/A
	205/70R15	96T	669	209	8.0	6J	460/A/B
	215/70R15	98T	683	221	8.2	6 1/2J	460/A/B
	225/60R15	96H	651	228	8.2	6 1/2J	420/A/A

	SIZE	L.I./S.R.	O.D.mm	S.W. mm	T.D.mm	R.W.inch	UTQG	
16	195/50R16	84V	602	201	8.0	6J	420/A/A	
	195/55R16	87H	620	201	8.0	6J	420/A/A	
	205/55R16	91V	632	214	8.0	6 1/2J	420/A/A	
	205/60R16	96V	652	209	8.0	6J	420/A/A	
	205/65R16	95H	672	209	8.0	6J	420/A/A	
	215/60R16	99V	664	221	8.2	6 1/2J	420/A/A	
	215/65R16	98T	686	221	8.2	6 1/2J	460/A/B	
	225/60R16	98H	676	228	8.2	6 1/2J	420/A/A	
	17	215/50R17	95V	648	226	8.2	7J	420/A/A
		215/55R17	94V	668	226	8.2	7J	420/A/A
215/60R17		96T	690	221	8.2	6 1/2J	460/A/B	
225/60R17		99T	702	228	8.2	6 1/2J	460/A/B	
18	225/45ZR18	95W	659	225	8.2	7 1/2J	360/A/A	

HIGH PERFORMANCE TIRE

ROVELO
TIRE



HIGH PERFORMANCE TIRE

RHP-780



Wet Performance
Four main grooves effectively drain water for improved traction on wet roads.



All-Season Performance
The tread design and compound evenly distribute ground pressure in all weather conditions to provide excellent driving performance.



Driving Comfort
Unique pattern design effectively reduces tire vibration and noise emissions for increased driving comfort.

	SIZE	L.I./S.R.	O.D.mm	S.W. mm	T.D.mm	R.W.inch	UTQG
13	155/65R13	73T	532	157	7.6	4.50B	360/A/A
	155/70R13	75T	548	157	7.3	4.50B	360/A/A
	155/80R13	79T	578	157	8.0	4.50B	360/A/A
	165/65R13	77T	544	170	7.6	5.00B	360/A/A
	165/70R13	79T	562	170	7.5	5.00B	360/A/A
	165/80R13	83T	594	165	8.0	4.50B	360/A/A
	175/70R13	82T	576	177	8.0	5.00B	360/A/A
14	165/60R14	75H	554	170	7.6	5J	360/A/A
	165/70R14	81T	588	170	7.5	5J	360/A/A
	175/65R14	82T	584	177	8.0	5J	360/A/A
	175/65R14	82H	584	177	8.0	5J	360/A/A
	175/65R14	86T	584	177	8.0	5J	360/A/A
	175/70R14	84T	602	177	8.0	5J	360/A/A
	185/70R14	88H	616	189	8.0	5 1/2J	360/A/A
15	195/70R14	91T	630	201	8.4	6J	360/A/A
	195/70R14	91H	630	201	8.4	6J	360/A/A
15	205/70R15	96T	669	209	8.5	6J	360/A/A
16	215/60R16	95V	664	221	8.8	6 1/2J	360/A/A

HIGH PERFORMANCE TIRE

ROVELO
TIRE



HIGH PERFORMANCE TIRE

RHP-780P



Hydroplaning Resistance
Optimal four channel grooves maximize hydroplaning resistance to ensure efficient drainage and greater safety on wet roads.



Stability
The specialized bead design ensures closer contact between the inflated tire and rim to improve driving safety.



Handling
The center rib and enhanced tread block design increases grip and operating stability for greater maneuverability and braking performance. Wet and dry grip is improved due to the widened rubber-to-road contact area.

	SIZE	L.I./S.R.	O.D.mm	S.W. mm	T.D.mm	R.W.inch	UTQG
14	155/65R14	75T	558	157	7.0	4 1/2J	400/A/A
	165/65R14	79T	570	170	7.6	5J	400/A/A
	185/55R14	80V	560	194	8.0	6J	400/A/A
	185/60R14	82H	578	189	8.4	5 1/2J	400/A/A
	185/65R14	86H	596	189	8.0	5 1/2J	400/A/A
	195/65R14	89H	610	201	8.0	6J	400/A/A
15	175/65R15	88H	609	177	8.0	5J	400/A/A
	175/65R15	84H	609	177	8.0	5J	400/A/A
	175/65R15	84T	609	177	8.0	5J	400/A/A
	185/55R15	82V	585	194	8.0	6J	400/A/A
	185/55R15	82H	585	194	8.0	6J	400/A/A
	185/60R15	84H	603	189	8.0	5 1/2J	400/A/A
	185/60R15	88H	603	189	8.0	5 1/2J	400/A/A
	185/65R15	88H	621	189	8.0	5 1/2J	400/A/A
	185/65R15	88T	621	189	8.0	5 1/2J	400/A/A
	185/65R15	92T	621	189	8.0	5 1/2J	400/A/A
	195/50R15	82V	577	201	8.0	6J	400/A/A
	195/50R15	82H	577	201	8.0	6J	400/A/A
	195/55R15	85V	595	201	8.0	6J	400/A/A
	195/60R15	88V	615	201	8.4	6J	400/A/A
	195/60R15	88H	615	201	8.4	6J	400/A/A
195/65R15	91H	635	201	8.0	6J	400/A/A	
195/65R15	91V	635	201	8.0	6J	400/A/A	
195/65R15	95T	635	201	8.0	6J	400/A/A	
205/60R15	91V	627	209	8.5	6J	400/A/A	
205/60R15	91H	627	209	8.5	6J	400/A/A	
205/65R15	94V	647	209	8.5	6J	400/A/A	
16	195/50R16	88V	602	201	8.0	6J	400/A/A
	195/55R16	87V	620	201	8.0	6J	400/A/A
	205/55R16	91V	632	214	8.0	6 1/2J	400/A/A
	205/55R16	94V	632	214	8.0	6 1/2J	400/A/A
	205/55R16	91H	632	214	8.0	6 1/2J	400/A/A
	205/60R16	92V	652	209	8.2	6J	400/A/A
	205/60R16	92H	652	209	8.2	6J	400/A/A
	205/60R16	96V	652	209	8.2	6J	400/A/A
	215/65R16	98H	686	221	8.8	6 1/2J	400/A/A

HIGH PERFORMANCE TIRE

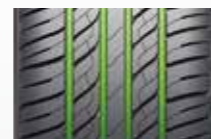


HIGH PERFORMANCE TIRE

RHP-778



	SIZE	L.I./S.R.	O.D.mm	S.W. mm	T.D.mm	R.W.inch	UTQG
13	155/70R13	75T	548	157	7.8	4.50B	460/A/B
	165/65R13	77T	544	170	7.8	5.00B	460/A/B
	165/70R13	79T	562	170	7.8	5.00B	460/A/B
	175/70R13	82T	576	177	8.0	5.00B	460/A/B
	185/70R13	86T	590	189	8.0	5.50B	460/A/B
	205/60R13	86T	576	209	8.0	6.00B	460/A/B



Four Wide Circumferential Grooves:
Improved wet traction and water expulsion.



Variable Angle Sipes:
Designed to ensure a quiet, smooth ride.



Solid Centre Rib:
Reduces irregular wear and improves high speed stability.



Symmetrical Wide Shoulders:
Enhanced cornering and braking performance.

HIGH PERFORMANCE TIRE

ROVELO
TIRE



	SIZE	L.I./S.R.	O.D.mm	S.W. mm	T.D.mm	R.W.inch	UTQG
14	165/60R14	75H	554	170	7.8	5J	420/A/A
	175/65R14	82H	584	177	8.0	5J	420/A/A
	175/65R14	86T	584	177	8.0	5J	420/A/A
	175/70R14	84T	602	177	8.0	5J	460/A/B
	175/80R14	88T	636	177	8.0	5J	460/A/B
	185/50R14	77V	542	194	8.0	6J	420/A/A
	185/60R14	82H	578	189	8.0	5 1/2J	420/A/A
	185/65R14	86H	596	189	8.0	5 1/2J	420/A/A
	185/70R14	88T	616	189	8.0	5 1/2J	460/A/B
	195/60R14	86H	590	201	8.2	6J	420/A/A
	195/70R14	91T	630	201	8.0	6J	420/A/A
	205/70R14	95T	644	209	8.0	6J	460/A/B
	215/60R14	91H	614	221	8.2	6 1/2J	420/A/A
	215/70R14	96T	658	221	8.2	6 1/2J	460/A/B
15	175/65R15	84H	609	177	8.0	5J	420/A/A
	185/55R15	82V	585	194	8.0	6J	420/A/A
	185/60R15	84H	603	189	8.0	5 1/2J	420/A/A
	185/65R15	88H	621	189	8.0	5 1/2J	420/A/A
	195/50R15	82V	577	201	8.0	6J	420/A/A
	195/55R15	85V	595	201	8.0	6J	420/A/A
	195/60R15	88H	615	201	8.0	6J	420/A/A
	195/65R15	91H	635	201	8.0	6J	420/A/A
	205/60R15	91H	627	209	8.2	6J	420/A/A
	205/65R15	94H	647	209	8.2	6J	420/A/A
	205/70R15	96T	669	209	8.2	6J	460/A/B
	215/60R15	94H	639	221	8.2	6 1/2J	420/A/A
	215/70R15	98T	683	221	8.2	6 1/2J	460/A/B

	SIZE	L.I./S.R.	O.D.mm	S.W. mm	T.D.mm	R.W.inch	UTQG
16	195/50R16	84V	602	201	8.0	6J	420/A/A
	195/55R16	87H	620	201	8.0	6J	420/A/A
	205/55R16	91V	632	214	8.2	6 1/2J	420/A/A
	205/55R16	91H	632	214	8.2	6 1/2J	420/A/A
	205/60R16	92V	652	209	8.2	6J	420/A/A
	205/60R16	92H	652	209	8.2	6J	420/A/A
	205/65R16	95H	672	209	8.2	6J	420/A/A
	215/55R16	97V	642	226	8.2	7J	420/A/A
	215/60R16	95V	664	221	8.2	6 1/2J	420/A/A
	215/65R16	98T	686	221	8.2	6 1/2J	460/A/B
	225/50R16	92V	632	233	8.2	7J	420/A/A
	225/60R16	98H	676	228	8.2	6 1/2J	420/A/A
	235/65R16	103T	712	240	8.2	7J	460/A/B
	17	205/50R17	89V	638	214	8.2	6 1/2J
215/50R17		95V	648	226	8.2	7J	420/A/A
215/55R17		94V	668	226	8.2	7J	420/A/A
215/60R17		96T	690	221	8.2	6 1/2J	460/A/B
215/65R17		99T	712	221	8.2	6 1/2J	460/A/B
225/50R17		94V	658	233	8.2	7J	420/A/A
225/55R17		97T	680	233	8.2	7J	460/A/B
225/60R17		99T	702	228	8.2	6 1/2J	460/A/B
225/65R17		102T	724	228	8.2	6 1/2J	460/A/B
18	235/55R17	99H	690	245	8.2	7 1/2J	420/A/A
	235/60R17	102T	714	240	8.2	7J	460/A/B
	225/45ZR18	95W	659	225	8.2	7 1/2J	380/AA/A
	235/50ZR18	97W	693	245	8.2	7 1/2J	380/AA/A
	245/45ZR18	100W	677	243	8.2	8J	380/AA/A

ULTRA HIGH PERFORMANCE TIRE

ROVELO
TIRE



ULTRA HIGH PERFORMANCE TIRE

RPX-988

	SIZE	L.I./S.R.	O.D.mm	S.W. mm	T.D.mm	R.W.inch	UTQG
15	195/45R15	78V	557	195	8.0	6 1/2J	340/A/A
16	195/45R16	84V	582	195	8.0	6 1/2J	340/A/A
	205/45R16	87Y	590	206	8.2	7J	340/A/A
	205/50ZR16	87W	612	214	8.2	6 1/2J	340/A/A
	205/55ZR16	91W	632	214	8.3	6 1/2J	340/A/A
	215/55ZR16	97W	642	226	8.2	7J	340/A/A
	225/55ZR16	99W	654	233	8.2	7J	340/A/A



Asymmetrical Tread Pattern
Provides excellent cornering stability while maintaining superior wet traction.



Multi-Dimensional Rib Sipes
Drastically improves braking in all weather conditions.



Reinforced Shoulder Ribs
Engineered for high-speed cornering while extending tread life.



Wavy Tread Sipes
Reduces vibrations for improved driving comfort.

ULTRA HIGH PERFORMANCE TIRE

ROVELO
TIRE



	SIZE	L.I./S.R.	O.D.mm	S.W. mm	T.D.mm	R.W.inch	UTQG
17	205/40ZR17	84Y	596	212	8.2	7 1/2J	340/A/A
	205/45ZR17	88Y	616	206	8.2	7J	340/A/A
	205/50ZR17	93W	638	214	8.2	6 1/2J	340/A/A
	215/40ZR17	87W	604	218	8.0	7 1/2J	340/A/A
	215/40ZR17	87Y	604	218	8.0	7 1/2J	340/A/A
	215/45ZR17	91W	626	213	8.0	7J	340/A/A
	215/45ZR17	91Y	626	213	8.0	7J	340/A/A
	215/50ZR17	95W	648	226	8.2	7J	340/A/A
	215/55ZR17	98W	668	226	8.2	7J	340/A/A
	225/45ZR17	94W	634	225	8.2	7 1/2J	340/A/A
	225/45ZR17	94Y	634	225	8.2	7 1/2J	340/A/A
	225/50ZR17	98W	658	233	8.2	7J	340/A/A
	225/55R17	101V	680	233	8.2	7J	340/A/A
	225/55ZR17	101W	680	233	8.2	7J	340/A/A
	235/45ZR17	97W	644	236	8.2	8J	340/A/A
	235/45ZR17	97Y	644	236	8.2	8J	340/A/A
	235/55ZR17	99W	690	245	8.2	7 1/2J	340/A/A
245/40ZR17	95Y	628	248	8.2	8 1/2J	340/A/A	
245/45ZR17	99Y	652	243	8.2	8J	340/A/A	
18	215/35ZR18	84Y	607	218	8.0	7 1/2J	340/A/A
	225/40ZR18	92W	637	230	8.2	8J	340/A/A
	225/40ZR18	92Y	637	230	8.2	8J	340/A/A
	225/45ZR18	95W	659	225	8.2	7 1/2J	340/A/A
	225/45ZR18	95Y	659	225	8.2	7 1/2J	340/A/A
	235/40ZR18	95W	645	241	8.2	8 1/2J	340/A/A

	SIZE	L.I./S.R.	O.D.mm	S.W. mm	T.D.mm	R.W.inch	UTQG
18	235/40ZR18	95Y	645	241	8.2	8 1/2J	340/A/A
	245/40ZR18	97Y	653	248	8.2	8 1/2J	340/A/A
	245/45ZR18	100W	677	243	8.2	8J	340/A/A
	245/45ZR18	100Y	677	243	8.2	8J	340/A/A
	255/35ZR18	94W	635	260	8.2	9J	340/A/A
	255/35ZR18	94Y	635	260	8.2	9J	340/A/A
	235/35ZR19	91W	647	241	8.2	8 1/2J	340/A/A
19	235/35ZR19	91Y	647	241	8.2	8 1/2J	340/A/A
	245/40ZR19	98W	679	248	8.2	8 1/2J	340/A/A
	245/45ZR19	98W	703	243	8.2	8J	340/A/A
	255/35ZR19	96Y	661	260	8.2	9J	340/A/A
	245/35ZR20	95W	680	248	8.2	8 1/2J	340/A/A
20	245/35ZR20	95Y	680	248	8.2	8 1/2J	340/A/A
	245/45ZR20	103W	728	243	8.2	8J	340/A/A
	255/35ZR20	97W	686	260	8.2	9J	340/A/A
	255/35ZR20	97Y	686	260	8.2	9J	340/A/A

ULTRA HIGH PERFORMANCE TIRE

ROVELO
TIRE



ULTRA HIGH PERFORMANCE TIRE

SPORT A1

	SIZE	L.I./S.R.	O.D.mm	S.W. mm	T.D.mm	R.W.inch	UTQG
15	195/45R15	78V	557	195	8.0	6 1/2J	340/A/A
	195/50R15	82V	577	201	8.0	6J	340/A/A
	195/55R15	85V	595	201	8.0	6J	340/A/A
16	195/45R16	84V	582	195	8.0	6 1/2J	340/A/A
	195/50R16	88V	602	201	8.0	6J	340/A/A
	205/45ZR16	87W	590	206	8.0	7J	340/A/A
	205/50R16	87V	612	214	8.0	6 1/2J	340/A/A
	205/55R16	91W	632	214	8.0	6 1/2J	340/A/A
	215/55ZR16	97W	642	226	8.2	7J	340/A/A
	225/55ZR16	99W	654	233	8.2	7J	340/A/A



Asymmetrical Tread Pattern
Provides excellent cornering stability while maintaining superior wet traction.



Groove Design
Efficiently drains water for safer driving on wet roads.



Shoulder Groove Design
Wave-like design on the shoulder helps reduce noise emissions and increases cornering capabilities.

ULTRA HIGH PERFORMANCE TIRE

ROVELO
TIRE



	SIZE	L.I./S.R.	O.D.mm	S.W. mm	T.D.mm	R.W.inch	UTQG
16	195/45R17	85V	608	195	8.0	6 1/2J	340/A/A
	205/40ZR17	84W	596	212	8.0	7 1/2J	340/A/A
	205/45ZR17	88W	616	206	8.0	7J	340/A/A
	205/50ZR17	93W	638	214	8.0	6 1/2J	340/A/A
	215/40ZR17	87W	604	218	8.0	7 1/2J	340/A/A
17	215/45ZR17	91W	626	213	8.2	7J	340/A/A
	215/50R17	95V	648	226	8.2	7J	340/A/A
	215/55ZR17	98W	668	226	8.2	7J	340/A/A
	225/45ZR17	94W	634	225	8.2	7 1/2J	340/A/A
	225/50ZR17	98W	658	233	8.2	7J	340/A/A
	225/55R17	101V	680	233	8.2	7J	340/A/A
	235/45ZR17	97W	644	236	8.2	8J	340/A/A
	235/50ZR17	96W	668	245	8.2	7 1/2J	340/A/A
	235/55ZR17	103W	690	245	8.2	7 1/2J	340/A/A
	245/40ZR17	95W	628	240	8.2	8 1/2J	340/A/A
	245/45ZR17	99W	652	243	8.2	8J	340/A/A
	215/40ZR18	89W	629	218	8.0	7 1/2J	340/A/A
	225/40ZR18	92W	637	230	8.2	8J	340/A/A
	225/45ZR18	95W	659	225	8.2	7 1/2J	340/A/A
	225/50ZR18	95W	683	233	8.2	7J	340/A/A
	235/40ZR18	95W	645	241	8.2	8 1/2J	340/A/A
	235/45R18	98V	669	236	8.2	8J	340/A/A
	235/50ZR18	97W	693	245	8.2	7 1/2J	340/A/A
	245/40ZR18	97Y	653	248	8.2	8 1/2J	340/A/A
	245/45ZR18	100W	677	243	8.2	8J	340/A/A
18	245/50ZR18	104Y	703	253	8.2	7 1/2J	340/A/A
	255/35ZR18	94W	635	260	8.2	9J	340/A/A
	255/45ZR18	103W	687	255	8.5	8 1/2J	340/A/A
	265/35ZR18	97Y	643	271	8.2	9 1/2J	340/A/A

	SIZE	L.I./S.R.	O.D.mm	S.W. mm	T.D.mm	R.W.inch	UTQG	
19	225/35ZR19	88W	641	230	8.2	8J	340/A/A	
	225/40ZR19	93Y	663	230	8.2	8J	340/A/A	
	235/35ZR19	91W	647	241	8.2	8 1/2J	340/A/A	
	235/40R19	96V	671	241	8.2	8 1/2J	340/A/A	
	245/35ZR19	93W	655	248	8.2	8 1/2J	340/A/A	
	245/40ZR19	98Y	679	248	8.2	8 1/2J	340/A/A	
	245/45ZR19	98W	703	243	8.2	8J	340/A/A	
	255/35ZR19	96W	661	260	8.2	9J	340/A/A	
	255/40R19	100W	687	260	8.2	9J	340/A/A	
	255/50R19	107W	739	265	8.5	8J	340/A/A	
	265/30ZR19	93Y	643	271	8.2	9 1/2J	340/A/A	
	275/30ZR19	96Y	649	278	8.2	9 1/2J	340/A/A	
	275/35ZR19	100W	675	278	8.2	9 1/2J	340/A/A	
	275/40ZR19	105Y	703	278	8.5	9 1/2J	340/A/A	
	275/45ZR19	108Y	731	273	8.5	9J	340/A/A	
	20	225/30ZR20	85Y	644	230	8.2	8J	340/A/A
		225/35ZR20	90W	666	230	8.2	8J	340/A/A
245/30ZR20		90W	656	248	8.2	8 1/2J	340/A/A	
245/35ZR20		95W	680	248	8.2	8 1/2J	340/A/A	
245/40ZR20		99Y	704	248	8.2	8 1/2J	340/A/A	
245/45ZR20		103W	728	243	8.2	8J	340/A/A	
245/50ZR20		102W	754	253	8.2	7 1/2J	340/A/A	
255/35ZR20		97W	686	260	8.2	9J	340/A/A	
255/40ZR20		97W	712	260	8.2	9J	340/A/A	
255/45ZR20		105W	738	255	8.5	8 1/2J	340/A/A	
275/30ZR20		97W	674	278	8.2	9 1/2J	340/A/A	
22	275/35ZR20	102W	700	278	8.2	9 1/2J	340/A/A	
	275/40ZR20	106W	728	278	8.5	9 1/2J	340/A/A	
	275/45ZR20	110W	756	273	8.2	9J	340/A/A	
	245/30ZR22	92W	707	248	8.2	8 1/2J	340/A/A	



COMMERCIAL TIRE

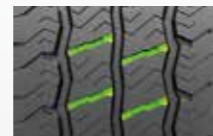
RCM-836



Three Channel Zigzag Grooves
Maximizes traction and water drainage in wet conditions.



Multi-Angle Sipe System
Sipes provide superior traction in snow and mud.



Full-Depth Acoustic Channels
Reduces vibrations to maximize passenger comfort.



Extra Wide Shoulders
Minimizes irregular wear and improves high-speed stability.

	SIZE	L.I./S.R.	O.D.mm	S.W. mm	T.D.mm	R.W.inch	UTQG
14	165/70R14C	89/87T	588	170	8.5	5J	/
	175/65R14C	90/88T	584	177	8.5	5J	/
15	195/70R15C	104/102R	655	201	9.5	6J	/
	195/70R15C	104/102T	655	201	9.5	6J	/
	205/65R15C	102/100T	647	209	9.5	6J	/
	205/70R15C	106/104R	669	209	9.5	6J	/
	205/70R15C	106/104T	669	209	9.5	6J	/
	215/70R15C	109/107R	683	221	10.0	6 1/2J	/
	215/70R15C	109/107T	683	221	10.0	6 1/2J	/
	225/70R15C	112/110R	697	228	10.0	6 1/2J	/
16	225/70R15C	112/110T	697	228	10.0	6 1/2J	/
	195/60R16C	99/97H	640	201	9.5	6J	/
	195/65R16C	104/102T	660	201	9.5	6J	/
	195/75R16C	107/105Q	698	196	9.5	5 1/2J	/
	195/75R16C	107/105T	698	196	9.5	5 1/2J	/
	205/65R16C	107/105T	672	209	9.5	6J	/
	205/75R16C	110/108T	714	203	9.5	5 1/2J	/
	215/65R16C	109/107R	686	221	9.5	6 1/2J	/
	215/65R16C	109/107T	686	221	9.5	6 1/2J	/
	215/70R16C	108/106T	708	221	10.0	6 1/2J	/
	215/75R16C	113/111R	728	216	10.0	6J	/
	215/75R16C	113/111T	728	216	10.0	6J	/
225/65R16C	112/110R	698	228	10.0	6 1/2J	/	
225/65R16C	112/110T	698	228	10.0	6 1/2J	/	
235/65R16C	115/113T	712	240	10.0	7J	/	

COMMERCIAL TIRE

ROVELO
TIRE

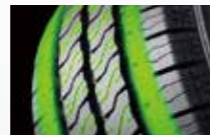


COMMERCIAL TIRE

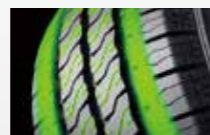
RCM-X+



Closed Shoulder Design
Enhances handling performance and promotes even wear.



Improved Handling and Lifetime
The closed shoulder design helps to improve overall handling and promote even wear for a longer tread life.



Wet Performance
The sipe design is optimized to improve handling and traction in wet weather conditions for greater overall safety.

	SIZE	L.I./S.R.	O.D.mm	S.W. mm	T.D.mm	R.W.inch	UTQG
12	155R12C	88/86N	550	157	8.0	4.50B	/
13	155R13C	90/88N	578	157	8.0	4 1/2J	/
	165R13C	94/93P	596	167	8.0	4 1/2J	/
14	185R14C	102/100Q	650	188	9.0	5 1/2J	/
	195R14C	106/104Q	666	198	9.0	5 1/2J	/
15	195/70R15C	104/102R	655	201	9.0	6J	/
	195/80R15C	108/106S	693	196	9.0	5 1/2J	/
	195R15C	106/104S	690	198	9.0	5 1/2J	/
	225/70R15C	112/110R	697	228	9.5	6 1/2J	/
16	195/75R16C	110/108Q	698	196	9.0	5 1/2J	/
	215/75R16C	116/114R	728	216	9.5	6J	/

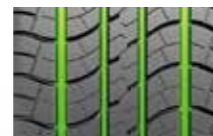
ON/OFF ROAD LIGHT TRUCK & SUV TIRE

ROVELO
TIRE



ON/OFF ROAD LIGHT TRUCK & SUV TIRE

ROAD QUEST HT



Main Groove Design
The main grooves are designed to efficiently expel water and reduce rolling resistance, thus offering greater fuel economy, high-speed stability, and wet traction.



Greater Comfort
Fine sipe design increases driving comfort on asphalt and concrete roads.



Open Shoulder Design
Improves stability and traction when cornering on wet and dry roads.

	SIZE	L.I./S.R.	O.D.mm	S.W. mm	T.D.mm	R.W.inch	UTQG
15	205/70R15	96H	669	209	8.8	6J	440/A/A
	235/75R15	105T	733	235	9.0	6 1/2J	500/A/B
16	215/65R16	102H	686	221	8.8	6 1/2J	440/A/A
	215/70R16	100H	708	221	9.0	6 1/2J	500/A/B
	225/70R16	103T	722	228	9.0	6 1/2J	500/A/B
	235/60R16	100H	688	240	8.8	7J	440/A/A
	235/70R16	106T	736	240	9.0	7J	500/A/B
	235/70R16	106H	736	240	9.0	7J	500/A/B
	245/70R16	111T	750	248	9.0	7J	500/A/B
	245/70R16	111H	750	248	9.0	7J	500/A/B
	245/75R16	111T	774	248	9.0	7J	500/A/B
	255/70R16	111T	764	260	9.0	7 1/2J	500/A/B
	265/70R16	112T	778	272	9.0	8J	500/A/B
17	265/75R16	116T	804	267	9.0	7 1/2J	500/A/B
	215/60R17	96H	690	221	8.8	6 1/2J	440/A/A
	225/60R17	99H	702	228	8.8	6 1/2J	440/A/A
	225/65R17	102H	724	228	8.2	6 1/2J	500/A/B
	235/55R17	99V	690	245	8.0	7 1/2J	420/A/A
	235/65R17	108H	738	240	9.0	7J	500/A/B
	245/65R17	111T	750	248	9.0	7J	500/A/B
	245/70R17	110T	776	248	9.0	7J	500/A/A
	265/65R17	112T	776	272	9.0	8J	500/A/B
	265/70R17	115T	804	272	9.0	8J	500/A/B
18	225/55R18	98V	705	233	8.0	7J	420/A/A
	235/55R18	100V	715	245	8.2	7 1/2J	420/A/A
	235/60R18	103V	739	240	9.0	7J	420/A/A
	245/60R18	105H	751	248	9.0	7J	500/A/A
	255/55R18	109Y	737	265	8.0	8J	420/A/A
	255/65R18	111T	789	260	9.0	7 1/2J	500/A/B
	255/70R18	113T	815	260	9.0	7 1/2J	500/A/B
	265/60R18	110T	775	272	9.0	8J	500/A/A
	265/65R18	114T	801	272	9.0	8J	500/A/B
	275/65R18	116T	815	279	9.0	8J	500/A/B
19	255/50R19	107V	739	265	8.0	8J	420/A/A
20	265/50R20	107V	774	277	9.0	8 1/2J	420/A/A
	275/55R20	117T	810	284	9.0	8 1/2J	500/A/B
	275/60R20	115T	838	279	9.0	8J	500/A/B

ON/OFF ROAD LIGHT TRUCK & SUV TIRE

ROVELO
TIRE



ON/OFF ROAD LIGHT TRUCK & SUV TIRE

MONTARE HT RV08



Handling
The main channel groove design improves grip and driving stability for greater maneuverability and braking performance on various road conditions.



Comfort
Unique pattern design ensures good vibration and noise absorption to increase driving comfort.

	SIZE	L.I./S.R.	O.D.mm	S.W. mm	T.D.mm	R.W.inch	UTQG
15	215/75R15	100S	703	216	8.7	6J	460/A/A
	235/75R15	105T	733	235	8.7	6 1/2J	460/A/A
16	235/70R16	106H	736	240	8.7	7J	460/A/A
17	215/60R17	96H	690	221	8.2	6 1/2J	460/A/A
	225/60R17	99H	702	228	8.2	6 1/2J	460/A/A
	225/65R17	102H	724	228	8.2	6 1/2J	460/A/A
	235/55R17	103V	690	245	8.5	7 1/2J	600/A/A
	235/65R17	108H	738	240	8.7	7J	460/A/A
	255/60R17	106H	738	260	9.0	7 1/2J	600/A/A
18	215/55R18	95V	693	226	8.5	7J	600/A/A
	225/55R18	102W	705	233	8.5	7J	600/A/A
	225/60R18	100H	727	228	8.5	6 1/2J	600/A/A
	235/50R18	97V	693	245	8.5	7 1/2J	600/A/A
	235/50RF18	97V	693	245	8.5	7 1/2J	600/A/A
	235/55R18	104W	715	245	8.5	7 1/2J	600/A/A
	235/60R18	103V	739	240	8.2	7J	460/A/A
	255/55R18	109V	737	265	9.0	8J	600/A/A
	255/55RF18	105H	737	265	9.0	8J	600/A/A
	19	235/50R19	103W	719	245	8.5	7 1/2J
235/55R19		101W	741	245	8.5	7 1/2J	600/A/A
245/55R19		103V	753	253	9.0	7 1/2J	600/A/A
255/50R19		103V	739	265	9.0	8J	600/A/A
255/50RF19		103V	739	265	9.0	8J	600/A/A



ON/OFF ROAD LIGHT TRUCK & SUV TIRE

ROAD QUEST AT

	SIZE	L.I./S.R.	O.D.mm	S.W. mm	T.D.mm	R.W.inch	UTQG
15	31×10.50R15LT	109S	775	268	13.0	8 1/2J	/
16	245/70R16	107S	750	248	10.5	7J	500/A/B
	265/70R16	112T	778	272	10.5	8J	500/A/B
17	265/65R17	112S	776	272	10.5	8J	500/A/B
18	265/60R18	110T	775	272	10.5	8J	500/A/B
20	265/50R20	111T	774	277	10.5	8 1/2J	500/A/B
	275/55R20	117T	810	284	10.5	8 1/2J	500/A/B



Strong Sidewall
Widened running surface ensures superior traction performance on all types of road surfaces.



- 1 Shoulder Design**
Widened shoulder grooves and nodules within the tread grooves effectively eject mud, sand, gravel, and other debris to improve grip.
- 2 Climbing Performance**
Tread blocks maintain a staggered bite to improve traction and climbing ability.
- 3 Traction Performance:**
Lengthened tread shoulder employs a multi-layered protruding design that improves strength and prevents damage to the carcass, allowing for a safe off-roading experience.

ON/OFF ROAD LIGHT TRUCK & SUV TIRE

ROVELO
TIRE



ON/OFF ROAD LIGHT TRUCK & SUV TIRE

RIDGETRAK AT



The NEW RIDGETRAK AT 3PMS is designed to deliver superior traction for SUVs, pickups and vans both off and on the road. The NEW RIDGETRAK AT 3PMS provides the same exceptional handling, on-and-off-road stability and quiet, comfortable ride as the original RIDGETRAK AT with the added bonus that it is winter tire tested and approved!



Versatile Applications

The aggressive open shoulder design efficiently expels snow, water, slush, and mud for optimum traction on all-terrain conditions.



Grip and Traction

The serrated tread block design provides excellent grip and traction on various road conditions.



Comfort

Solid center rib and read block sipes offer greater handling and comfort.

	SIZE	L.I./S.R.	O.D.mm	S.W. mm	T.D.mm	R.W.inch	UTQG
15	235/75R15	109S	733	235	10.5	6 1/2J	500/A/B
	30x9.50R15LT	104S	750	240	13.0	7 1/2J	/
	31x10.50R15LT	109S	775	268	13.0	8 1/2J	/
	LT235/75R15	104/101R	733	235	13.0	6 1/2J	/
16	235/70R16	106S	736	240	10.5	7J	500/A/B
	245/75R16	111S	774	248	10.5	7J	500/A/B
	255/70R16	111T	764	260	10.5	7 1/2J	500/A/A
	265/70R16	112T	778	272	10.5	8J	500/A/B
	265/75R16	116S	804	267	10.5	7 1/2J	500/A/B
	LT225/75R16	115/112R	744	223	13.0	6J	/
	LT235/85R16	120/116R	806	235	13.0	6 1/2J	/
	LT245/75R16	120/116S	774	248	13.0	7J	/
	LT265/75R16	123/120S	804	267	13.0	7 1/2J	/
	LT285/75R16	126/123R	834	286	13.0	8J	/
17	235/65R17	104S	738	240	10.5	7J	500/A/B
	245/65R17	107S	750	248	10.5	7J	500/A/B
	245/70R17	110T	776	248	10.5	7J	500/A/B
	265/65R17	112S	776	272	10.5	8J	500/A/B
	265/70R17	115S	804	272	10.5	8J	500/A/B
	285/65R17	116H	802	292	10.5	8 1/2J	500/A/A
	LT235/80R17	120/117R	808	235	13.0	6 1/2J	/
	LT245/70R17	119/116S	776	248	13.0	7J	/
	LT245/75R17	121/118S	800	248	13.0	7J	/
	LT265/70R17	121/118S	804	272	13.0	8J	/
LT285/70R17	121/118R	832	292	13.0	8 1/2J	/	
18	235/60R18	107T	739	240	10.5	7J	500/A/A
	265/65R18	114T	801	272	10.5	8J	500/A/B
	275/65R18	116T	815	279	10.5	8J	500/A/B
	LT265/70R18	124/121R	829	272	13.0	8J	/
	LT275/65R18	123/120R	815	279	13.0	8J	/
	LT275/70R18	125/122R	843	279	13.0	8J	/
	LT285/60R18	118/115S	799	292	13.0	8 1/2J	/
19	255/55R19	111H	763	265	10.5	8J	500/A/A
	265/50R20	111T	774	277	10.5	8 1/2J	500/A/B
	275/55R20	117T	810	284	10.5	8 1/2J	500/A/B
	275/60R20	115T	838	279	10.5	8J	500/A/B
	LT265/60R20	121/118R	826	272	13.0	8J	/
	LT275/55R20	120/117S	810	284	13.0	8 1/2J	/
	LT275/60R20	123/120R	838	279	13.0	8J	/
	LT275/65R20	126/123R	866	279	13.0	8J	/
	LT305/55R20	121/118R	844	316	13.0	9 1/2J	/
	LT325/60R20	126/123R	898	331	13.0	9 1/2J	/

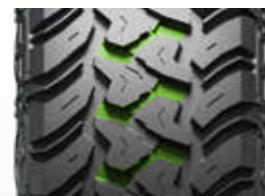
ON/OFF ROAD LIGHT TRUCK & SUV TIRE



ON/OFF ROAD LIGHT TRUCK & SUV TIRE

ROADQUEST RMT810

	SIZE	L.I./S.R.	O.D.mm	S.W. mm	T.D.mm	R.W.inch	UTQG
15	31x10.50R15LT	109Q	775	268	15.3	8 1/2J	/
16	LT245/75R16	120/116Q	774	248	15.3	7J	/
	LT265/70R16	121/118Q	773	272	15.3	8J	/
	LT265/75R16	123/120Q	804	267	15.3	7 1/2J	/
17	LT265/65R17	120/117Q	776	272	15.3	8J	/
18	LT265/65R18	117/114Q	801	272	15.3	8J	/



OFF-ROAD PERFORMANCE

The z-shaped grooves between blocks is designed to enhance off-road driving capabilities by improving grip and climbing ability.



OFF-ROAD GRIP

Deepened grooves allows mud to easily be discharged from the tread at both high and low speeds. The design also offers better grip when traveling on rocky or rugged roads.



OFF-ROAD STABILITY

Large blocks on the shoulder vastly enhance handling on muddy and rock roads.



OFF-ROAD DURABILITY

The shield pattern which extends from the sidewall protects the sidewall from abrasions and increase traction on mud roads. The carcass is designed with three layers of polyester fabric to make it rugged and resistant to strong impacts.

FOUR SEASONS TIRE



FOUR SEASONS TIRE

ALL WEATHER R4S



Safety

New sipe designs greatly improve grip and braking responsiveness.

Driving Comfort

Tread design is optimized for a comfortable drive year-round.

Overall Performance

New groove design pattern greatly improves handling and stability.



Inner Pattern
Improved handling in snow and rain

Outer Pattern
Handling performance and stability in dry conditions

	SIZE	L.I./S.R.	O.D.mm	S.W. mm	T.D.mm	R.W.inch	UTQG
13	1155/70R13	75T	548	157	8.0	4.50B	300/A/A
	155/80R13	79T	578	157	8.0	4.50B	300/A/A
14	155/65R14	75T	558	157	8.0	4 1/2J	300/A/A
	165/65R14	79T	570	170	8.0	5J	300/A/A
	165/70R14	85T	588	170	8.0	5J	300/A/A
	175/65R14	82T	584	177	8.5	5J	300/A/A
	175/70R14	88T	602	177	8.5	5J	300/A/A
	185/60R14	82T	578	189	8.5	5 1/2J	300/A/A
	185/65R14	86T	596	189	8.5	5 1/2J	300/A/A
15	175/65R15	84H	609	177	8.5	5J	300/A/A
	185/55R15	82H	585	194	8.5	6J	300/A/A
	185/60R15	88H	603	189	8.5	5 1/2J	300/A/A
	185/65R15	88H	621	189	8.5	5 1/2J	300/A/A
	195/50R15	82H	577	201	8.5	6J	300/A/A
	195/55R15	85H	595	201	8.5	6J	300/A/A
	195/60R15	88H	615	201	8.5	6J	300/A/A
	195/65R15	91H	635	201	8.5	6J	300/A/A
	16	195/55R16	87V	620	201	8.5	6J
205/45R16		87V	590	206	8.5	7J	300/A/A
205/55R16		94V	632	214	8.5	6 1/2J	300/A/A
205/60R16		96V	652	209	8.5	6J	300/A/A
215/55R16		97V	642	226	8.5	7J	300/A/A
215/60R16		99V	664	221	8.5	6 1/2J	300/A/A
17	205/50R17	93V	638	214	8.5	6 1/2J	300/A/A
	225/45R17	94V	634	225	8.5	7 1/2J	300/A/A
	225/50R17	98V	658	233	8.5	7J	300/A/A

STUDDABLE WINTER TIRE

ROVELO
TIRE



STUDDABLE WINTER TIRE

RWS-677

	SIZE	L.I./S.R.	O.D.mm	S.W. mm	T.D.mm	R.W.inch	UTQG
14	175/65R14	82T	584	177	10.0	5J	/
	175/70R14	84T	602	177	10.0	5J	/
	185/60R14	82T	578	189	10.0	5 1/2J	/
	185/65R14	86T	596	189	10.0	5 1/2J	/
	185/70R14	86T	616	189	10.0	5 1/2J	/



Winter Performance

The tread pattern is designed to improve traction on snow and ice while also reducing noise emissions.



Winter Safety

Tread grooves effectively channel slush, snow, and water out of the tire for improved traction and braking performance.



Winter Grip

The tire stud locations and quantity are optimized to provide effective grip in winter weather conditions.

STUDDABLE WINTER TIRE

ROVELO
TIRE



	SIZE	L.I./S.R.	O.D.mm	S.W. mm	T.D.mm	R.W.inch	UTQG
15	175/65R15	84T	609	177	10.0	5J	/
	185/55R15	82T	585	194	10.0	6J	/
	185/60R15	84T	603	189	10.0	5 1/2J	/
	185/65R15	88T	621	189	10.0	5 1/2J	/
	195/60R15	88T	615	201	10.0	6J	/
	195/65R15	91T	635	201	10.0	6J	/
	205/65R15	94T	647	209	10.0	6J	/
	215/70R15	98T	683	221	10.0	6 1/2J	/
	235/75R15	105S	733	235	11.0	6 1/2J	/
	16	205/55R16	91T	632	214	10.0	6 1/2J
205/60R16		92T	652	209	10.0	6J	/
215/55R16		97H	642	226	10.0	7J	/
215/60R16		95T	664	221	10.0	6 1/2J	/
215/65R16		98T	686	221	10.0	6 1/2J	/
215/70R16		100S	708	221	11.0	6 1/2J	/
225/60R16		98T	676	228	10.0	6 1/2J	/
225/65R16		100T	698	228	10.0	6 1/2J	/
225/70R16		103S	722	228	11.0	6 1/2J	/
235/70R16		106S	736	240	11.0	7J	/
245/75R16	111S	774	248	11.0	7J	/	

	SIZE	L.I./S.R.	O.D.mm	S.W. mm	T.D.mm	R.W.inch	UTQG
17	215/60R17	96T	690	221	10.0	6 1/2J	/
	225/45R17	94H	634	225	10.0	7 1/2J	/
	225/50R17	98H	658	233	10.0	7J	/
	225/60R17	99T	702	228	10.0	6 1/2J	/
	225/65R17	102S	724	228	11.0	6 1/2J	/
	235/60R17	102H	714	240	10.0	7J	/
	235/65R17	104S	738	240	11.0	7J	/
	265/65R17	112T	776	272	11.2	8J	/
	265/70R17	115S	804	272	11.0	8J	/
	18	225/40R18	92H	637	230	10.0	8J
225/55R18		98T	705	233	10.0	7J	/
225/60R18		100T	727	228	10.0	6 1/2J	/
235/60R18		107T	739	240	10.0	7J	/
235/65R18		106T	763	240	11.2	7J	/
245/60R18		105T	751	248	11.2	7J	/
255/55R18		105H	737	265	10.0	8J	/
265/60R18		110T	775	272	11.2	8J	/
275/65R18		116S	815	279	11.2	8J	/
19		235/55R19	101H	741	245	10.0	7 1/2J
	255/50R19	107H	739	265	10.0	8J	/
20	275/40R20	106H	728	278	11.2	9 1/2J	/

STUDLESS WINTER TIRE

ROVELO
TIRE



STUDLESS WINTER TIRE

RWT-768



Winter Safety

Multi-angle tread and shoulder grooves divert slush and snow out of the tire for improved overall handling and safety.



Improved Ground Contact

The zigzag center rib improves the tire's ground contact area allowing for better braking performance.



Winter Grip

The high-density of angled sipes are designed to provide maximum traction during acceleration, braking, and turning.

	SIZE	L.I./S.R.	O.D.mm	S.W. mm	T.D.mm	R.W.inch	UTQG
13	155/70R13	75T	548	157	8.0	4.50B	/
	155/80R13	79T	578	157	8.0	4.50B	/
	165/70R13	79T	562	170	8.0	5.00B	/
	165/70R13	83T	562	170	8.0	5.00B	/
	175/70R13	82T	576	177	8.7	5.00B	/
14	155/65R14	75T	558	157	8.0	4 1/2J	/
	165/70R14	81T	588	170	8.0	5J	/
	175/65R14	82T	584	177	8.7	5J	/
	175/70R14	84T	602	177	8.7	5J	/
	185/60R14	82T	578	189	8.7	5 1/2J	/
	185/65R14	86T	596	189	8.7	5 1/2J	/
15	175/65R15	84T	609	177	8.7	5J	/
	185/55R15	82H	585	194	8.7	6J	/
	185/60R15	84T	603	189	8.7	5 1/2J	/
	185/60R15	88T	603	189	8.7	5 1/2J	/
	185/65R15	88T	621	189	8.7	5 1/2J	/
	195/55R15	85H	595	201	8.7	6J	/
	195/60R15	88H	615	201	8.7	6J	/
	195/65R15	91T	635	201	8.7	6J	/
	195/65R15	95T	635	201	8.7	6J	/
	205/65R15	94T	647	209	9.1	6J	/
16	195/55R16	87H	620	201	8.7	6J	/
	205/55R16	91T	632	214	9.1	6 1/2J	/
	205/55R16	91H	632	214	9.1	6 1/2J	/
	205/55R16	94H	632	214	9.1	6 1/2J	/
	205/60R16	92H	652	209	9.1	6J	/
	205/60R16	96H	652	209	9.1	6J	/
	215/55R16	93H	642	226	9.1	7J	/
	215/60R16	95H	664	221	9.1	6 1/2J	/
	215/65R16	98H	686	221	9.1	6 1/2J	/
	225/55R16	99H	654	233	9.1	7J	/
17	225/60R16	98H	676	228	9.1	6 1/2J	/
	225/45R17	94H	634	225	9.1	7 1/2J	/
	225/50R17	98H	658	233	9.1	7J	/
	225/55R17	97H	680	233	9.1	7J	/

ROVELO
TIRE

ROVELO

RADIAL TRUCK TIRES CATALOG



RADIAL TRUCK TIRES
CATALOG

REV 23.01

CONTENTS



LONG HAUL / REGIONAL

RSL1-LF.....07	RSR68.....20
RSR21.....08	SAR3.....21
SSR1.....09	RDR01.....22
SSR2.....10	RDR02.....23
SSR4.....11	RDR37.....24
RAR97.....12	RDR37A.....25
RFR36.....13	RDR4.....26
RSR4.....14	RDR72.....27
RSR6.....15	RDR3.....28
RSR7.....16	SDR1.....29
RSR7-LF.....17	RAR7-WB.....30
RSR61.....18	RTR96.....31
RSR62.....19	SSR3.....32

ON & OFF ROAD

RAM1.....35	SAM2.....44
RAM2.....37	SAM3.....45
RAM27.....38	RDM3.....46
RAM61.....39	RDM19.....47
RAM80.....40	RDM25.....48
RAM86.....41	SDR2.....49
RAM89.....42	RDM68.....50
SAM1.....43	RAR8-WB.....51

OFF ROAD

RDM1.....55	RDO28.....56
-------------	--------------

LONG HUAL/REGIONAL

Steer/All-position



Drive



Trailer





RSL1-LF



TIRE FEATURES:

- Four main groove design improves handling and driving stability for overall better driving comfort.
- The outer contour design is optimally balanced to greatly improve heat dissipation and high speed performance.
- The tread rubber is specially designed to improve wear resistance

Plant	Size	L.I&S.R	P.R	T.D/ mm	RIM/ inch	O.D/ mm	S.W/ mm	S.L.R/ inch	Single/ kg	Dual/ kg	A.P/ Kpa	A.P/ Psi
VN	11R22.5	144/142M	14	14.5	8.25	1054	279	19.33	2800	2650	720	105
VN	11R22.5	146/143M	16	14.5	8.25	1054	279	19.33	3000	2725	830	120
VN	11R24.5	146/143M	14	14.5	8.25	1104	279	20.31	3000	2725	720	105
VN	11R24.5	149/146M	16	14.5	8.25	1104	279	20.31	3250	3000	830	120
VN	285/75R24.5	144/141M	14	14.5	8.25	1050	283	19.41	2800	2575	760	110
VN	295/75R22.5	144/141M	14	14.5	9.00	1014	298	18.66	2800	2575	760	110



RSR21



TIRE FEATURES:

- Groove and sipe design improve tire grip.
- The widened running surface improves pressure distribution for better traction.
- Groove nodules improve handling and driving comfort.
- The widened shoulders and shallow groove design effectively dissipate heat to promote even shoulder wear.

Plant	Size	L.I&S.R	P.R	T.D/ mm	RIM/ inch	O.D/ mm	S.W/ mm	S.L.R/ inch	Single/ kg	Dual/ kg	A.P/ Kpa	A.P/ Psi
VN	295/80R22.5	152/149M	18	16	9.00	1044	298	19.17	3550	3250	900	130



SSR1



TIRE FEATURES:

- Broad tread pattern improves handling for stable highway performance.
- Four wide main grooves effectively expel water to improve driving safety.
- Solid shoulder design promotes even wear.



SSR2



TIRE FEATURES:

- Extra wide shoulder design improves tire durability.
- Tread block grooves and sipes effectively expel water for greater traction on wet roads.
- Optimized tread profile reduces rolling resistance for improved fuel economy.
- Tread groove nodules reduce stone retention.

Plant	Size	L.I&S.R	P.R	T.D/ mm	RIM/ inch	O.D/ mm	S.W/ mm	S.L.R/ inch	Single/ kg	Dual/ kg	A.P/ Kpa	A.P/ Psi
CN	11R22.5	144/142M	14	14.5	8.25	1054	279	19.33	2800	2650	720	105
CN	11R22.5	146/143M	16	14.5	8.25	1054	279	19.33	3000	2725	830	120
CN	11R22.5	148/145M	16	14.5	8.25	1054	279	19.33	3150	2900	850	123
CN	11R24.5	149/146L	16	14.5	8.25	1104	279	20.31	3250	3000	830	120
CN	295/75R22.5	144/141M	14	14.5	9.00	1014	298	18.66	2800	2575	760	110

Plant	Size	L.I&S.R	P.R	T.D/ mm	RIM/ inch	O.D/ mm	S.W/ mm	S.L.R/ inch	Single/ kg	Dual/ kg	A.P/ Kpa	A.P/ Psi
CN	12R22.5	152/148M	16	15.5	9.00	1085	300	19.84	3550	3150	850	123
CN	12R22.5	152/149L	18	15.5	9.00	1085	300	19.84	3550	3250	930	135
CN	295/80R22.5	152/149M	18	14.5	9.00	1044	298	19.17	3550	350	900	130
CN	315/80R22.5	157/154K	20	15	9.00	1076	312	19.69	4125	3750	900	130



SSR4



TIRE FEATURES:

- Optimized tread profile improves ground contract pressure distribution to promote even tread wear.
- Tread compound reduces rolling resistance for improved fuel economy.
- Tread groove nodules reduce stone retention.
- Four main grooves improve driving stability and comfort.

Plant	Size	L.I&S.R	P.R	T.D/ mm	RIM/ inch	O.D/ mm	S.W/ mm	S.L.R/ inch	Single/ kg	Dual/ kg	A.P/ Kpa	A.P/ Psi
CN	215/75R17.5	135/133L	16	13	6.00	767	211	14.17	2180	2060	860	125
CN	225/70R19.5	125/123M	12	13	6.75	811	226	15.43	1650	1550	660	95
CN	225/70R19.5	128/126L	14	13	6.75	811	226	15.43	1800	1700	760	110
CN	235/75R17.5	132/130M	14	13.5	6.75	797	233	14.69	2000	1900	760	110
CN	235/75R17.5	143/141L	16	13.5	6.75	797	233	14.69	2725	2575	860	125
CN	245/70R19.5	129/127M	12	13.5	7.50	839	248	15.39	1850	1750	660	95
CN	245/70R19.5	133/131L	14	13.5	7.50	839	248	15.39	2060	1950	760	110
CN	245/70R19.5	135/133L	16	13.5	7.50	839	248	15.39	2180	2060	860	125
CN	255/70R22.5	140/137L	16	13.5	7.50	930	255	17.13	2500	2300	830	120
CN	275/70R22.5	148/145M	16	15	8.25	958	275	17.56	3150	2900	900	130



RAR97



TIRE FEATURES:

- Tread compound and shoulder design effectively extends service life.
- Tread sipe design improves traction and wet skid resistance.
- Groove design improves performance in various regional applications.

Plant	Size	L.I&S.R	P.R	T.D/ mm	RIM/ inch	O.D/ mm	S.W/ mm	S.L.R/ inch	Single/ kg	Dual/ kg	A.P/ Kpa	A.P/ Psi
CN	7.50R16LT	122/118L	14	10	6.00G	805	215	14.76	1320	1180	770	112



RFR36



TIRE FEATURES:

- Tread sipe design is engineered to reduce heat buildup while also providing exceptional grip and wet skid resistance.
- Jagged tread groove design offers exceptional handling and improves hydroplaning resistance.
- Groove shoulders are reinforced to promote even tread wear.
- Widened running surface and deepened tread improve wear resistance for greater overall mileage.

Plant	Size	L.I&S.R	P.R	T.D/ mm	RIM/ inch	O.D/ mm	S.W/ mm	S.L.R/ inch	Single/ kg	Dual/ kg	A.P/ Kpa	A.P/ Psi
VN	10.00R20	149/146K	18	16	7.5	1054	278	19.13	3250	3000	930	135



RSR4



TIRE FEATURES:

- Wide main grooves effectively expel water for greater driving performance on wet roads.
- Widened footprint effectively distributes weight for improved stability and even tread wear.
- Improved tread compound increases durability delivering longer tread life.

Plant	Size	L.I&S.R	P.R	T.D/ mm	RIM/ inch	O.D/ mm	S.W/ mm	S.L.R/ inch	Single/ kg	Dual/ kg	A.P/ Kpa	A.P/ Psi
VN	215/75R17.5	135/133L	16	13	6.00	767	211	14.17	2180	2060	860	125
VN	225/70R19.5	128/126L	14	13	6.75	811	226	15.43	1800	1700	760	110
VN	235/75R17.5	143/141L	18	13.5	6.75	797	233	14.69	2725	2575	860	125
VN	245/70R19.5	133/131L	14	13.5	7.50	839	248	15.39	2060	1950	760	110
CN	245/70R19.5	136/134J	16	13.5	7.50	839	248	15.39	2240	2120	850	125
VN	245/70R19.5	135/133L	16	13.5	7.50	839	248	15.39	2180	2060	860	125
VN	255/70R22.5	140/137L	16	14	7.50	930	255	17.13	2500	2300	830	120
VN	275/70R22.5	148/145M	18	15	8.25	958	275	17.56	3150	2900	900	130



RSR6



TIRE FEATURES:

- Main groove and sipe designs offer great wet skid resistance and improved handling.
- Shoulder sipes and heat-resistant rubber compound effectively reduce heat buildup and improve tire durability.
- Tread compound significantly improves wear resistance.



RSR7



TIRE FEATURES:

- Main groove and sipe designs offer great wet skid resistance and improved handling.
- Shoulder sipes and heat-resistant rubber offer significantly improve tire durability.
- Tread compound significantly improves wear resistance.

Plant	Size	L.I&S.R	P.R	T.D/ mm	RIM/ inch	O.D/ mm	S.W/ mm	S.L.R/ inch	Single/ kg	Dual/ kg	A.P/ Kpa	A.P/ Psi
VN	12R22.5	152/149K	18	16	9.00	1085	300	19.84	3550	3250	930	135
VN	315/80R22.5	156/153L	20	16	9.00	1076	312	19.69	4000	3650	850	125
VN	315/80R22.5	157/154L	20	16	9.00	1076	312	19.69	4125	3750	900	130

Plant	Size	L.I&S.R	P.R	T.D/ mm	RIM/ inch	O.D/ mm	S.W/ mm	S.L.R/ inch	Single/ kg	Dual/ kg	A.P/ Kpa	A.P/ Psi
VN	245/70R17.5	143/141K	18	13	7.50	789	248	14.41	2725	2575	875	127
VN	255/70R22.5	140/137M	16	13.5	7.50	930	255	17.13	2500	2300	830	120
VN	275/70R22.5	148/145M	18	14.5	8.25	958	275	17.56	3150	2900	900	130



RSR7-LF



TIRE FEATURES:

- Main groove and sipe designs offer great wet skid resistance and improved handling.
- Shoulder sipes and heat-resistant rubber offer significantly improved tire durability.
- Tread compound significantly improves wear resistance.



RSR61



TIRE FEATURES:

- Reduced rolling resistance improves fuel economy.
- The shoulder pattern is designed to promote even shoulder wear for a longer usage life.
- Strengthened materials used in the tire structure help improve overall safety.

Plant	Size	L.I.&S.R	P.R	T.D/ mm	RIM/ inch	O.D/ mm	S.W/ mm	S.L.R/ inch	Single/ kg	Dual/ kg	A.P/ Kpa	A.P/ Psi
VN	11R22.5	144/142L	14	14.5	8.25	1054	279	19.33	2800	2650	720	105
VN	11R22.5	146/143L	16	14.5	8.25	1054	279	19.33	3000	2725	830	120
VN	295/75R22.5	144/141L	14	14.5	9.00	1014	298	18.66	2800	2575	760	110
VN	295/75R22.5	146/143L	16	14.5	9.00	1014	298	18.66	3000	2725	830	120

Plant	Size	L.I.&S.R	P.R	T.D/ mm	RIM/ inch	O.D/ mm	S.W/ mm	S.L.R/ inch	Single/ kg	Dual/ kg	A.P/ Kpa	A.P/ Psi
CN	11.00R20	150/147L	16	14.5	8.0	1085	293	19.65	3350	3075	830	120
CN	11.00R20	152/149L	18	14.5	8.0	1085	293	19.65	3550	3250	930	135



RSR62



TIRE FEATURES:

- Main groove design reduces rolling resistance for improved fuel economy.
- Tread compound promotes even tread wear for a longer tire life.
- Tread groove nodules reduce stone retention.



RSR68



TIRE FEATURES:

- Tread sipes improve heat dissipation, grip and wet skid resistance.
- Upgraded groove design helps to reduce stone retention.
- Tread pattern is optimized to improve handling at high speeds.

Plant	Size	L.I&S.R	P.R	T.D/ mm	RIM/ inch	O.D/ mm	S.W/ mm	S.L.R/ inch	Single/ kg	Dual/ kg	A.P/ Kpa	A.P/ Psi
CN	11.00R20	152/149L	18	14.5	8.0	1059	293	19.65	3550	3250	930	135
CN	11R22.5	148/145M	16	14	8.25	1054	279	19.33	3150	2900	850	123
CN	295/80R22.5	152/149M	18	15	9.00	1044	298	19.17	3550	3250	900	130

Plant	Size	L.I&S.R	P.R	T.D/ mm	RIM/ inch	O.D/ mm	S.W/ mm	S.L.R/ inch	Single/ kg	Dual/ kg	A.P/ Kpa	A.P/ Psi
CN	315/80R22.5	156/153K	20	15	9.00	1076	312	19.69	4000	3650	850	123



SAR3



TIRE FEATURES:

- The specialized groove design effectively improves grip and wet skid resistance.
- Wave-like design located at the bottom of the groove offers improved handling and driving comfort.
- Widened running surface offers greater traction and grip.
- The wider shoulder and specialized grooves increase heat dissipation and promote even wear.

Plant	Size	L.I&S.R	P.R	T.D/ mm	RIM/ inch	O.D/ mm	S.W/ mm	S.L.R/ inch	Single/ kg	Dual/ kg	A.P/ Kpa	A.P/ Psi
CN	11.00R20	150/147L	16	15	8.0	1085	293	19.65	3350	3075	830	120
CN	11.00R20	152/149L	18	15	8.0	1085	293	19.65	3550	3250	930	135



RDR01



TIRE FEATURES:

- Optimized pattern design provides better driving and braking performance.
- Open shoulder design improves heat dissipation.
- Deep tread and special tread compound improve overall durability.

Plant	Size	L.I&S.R	P.R	T.D/ mm	RIM/ inch	O.D/ mm	S.W/ mm	S.L.R/ inch	Single/ kg	Dual/ kg	A.P/ Kpa	A.P/ Psi
VN	10.00R20	149/146K	18	19	7.5	1054	278	19.13	3250	3000	930	135



RDR02



TIRE FEATURES:

- The optimized profile design and wide tread delivers improved abrasion resistance for longer service life.
- Low rolling resistance tread rubber compound improves overall fuel economy.
- Optimized dynamic material distribution reduces heat build up for improved safety.

Plant	Size	L.I.&S.R	P.R	T.D/ mm	RIM/ inch	O.D/ mm	S.W/ mm	S.L.R/ inch	Single/ kg	Dual/ kg	A.P/ Kpa	A.P/ Psi
VN	10.00R20	149/146K	18	18	7.5	1054	278	19.13	3250	3000	930	135



RDR37



TIRE FEATURES:

- Tread blocks have an added sipe which helps to reduce hardness and offer greater wet traction.
- Wide and deep tread grooves improve the tire's self-cleaning capabilities, promote even wear, and offer greater mileage.
- The number of groove nodules connecting tread blocks have increased to promote even wear.

Plant	Size	L.I.&S.R	P.R	T.D/ mm	RIM/ inch	O.D/ mm	S.W/ mm	S.L.R/ inch	Single/ kg	Dual/ kg	A.P/ Kpa	A.P/ Psi
CN	295/80R22.5	152/149L	18	20	9.00	1050	298	19.17	3550	3250	900	130
CN	315/80R22.5	157/154K	20	21.5	9.00	1082	312	19.69	4125	3750	900	130



RDR37A



TIRE FEATURES:

- Tread blocks have an added sipe which helps to reduce hardness and offer greater wet traction.
- Wide and deep tread grooves improve the tire's self-cleaning capabilities, promote even wear, and offer greater mileage.
- The number of groove nodules connecting tread blocks have increased to promote even wear.



RDR4



TIRE FEATURES:

- Aggressive, open-shoulder tread improves self cleaning capabilities for exceptional traction in mud and snow.
- Staggered tread blocks evenly distribute pressure to promote even wear.
- Deep 25/32" tread depth improves service life.

Plant	Size	L.I&S.R	P.R	T.D/ mm	RIM/ inch	O.D/ mm	S.W/ mm	S.L.R/ inch	Single/ kg	Dual/ kg	A.P/ Kpa	A.P/ Psi
CN	11R22.5	148/145M	16	19.5	8.25	1065	279	19.33	3150	2900	850	123
CN	12R22.5	152/149L	18	22.5	9.00	1096	300	19.84	3550	3250	930	135

Plant	Size	L.I&S.R	P.R	T.D/ mm	RIM/ inch	O.D/ mm	S.W/ mm	S.L.R/ inch	Single/ kg	Dual/ kg	A.P/ Kpa	A.P/ Psi
VN	11R22.5	144/142M	14	20	8.25	1065	279	19.33	2800	2650	720	105
VN	11R22.5	146/143M	16	20	8.25	1065	279	19.33	3000	2725	830	120
VN	11R24.5	146/143M	14	20	8.25	1116	279	20.31	3000	2725	720	105
VN	11R24.5	149/146M	16	20	8.25	1116	279	20.31	3250	3000	830	120
VN	255/70R22.5	140/137L	16	20	7.50	930	255	17.13	2500	2300	830	120



RDR72



TIRE FEATURES:

- Widened tread grooves effectively improve grip.
- Optimized tread width improves traction and helps to reduce fuel consumption.
- The transverse sipe design improves wet traction.



RDR3



TIRE FEATURES:

- Tread block sipe design improves heat dissipation.
- Wide tread grooves effectively improve self-cleaning performance and traction.
- Wide tread improve handling and driving safety.
- Rib connectors between the tread blocks improve rigidity and promote even wear.

Plant	Size	L.I&S.R	P.R	T.D/ mm	RIM/ inch	O.D/ mm	S.W/ mm	S.L.R/ inch	Single/ kg	Dual/ kg	A.P/ Kpa	A.P/ Psi
CN	315/80R22.5	156/153K	20	19.5	9.00	1076	312	19.69	4000	3650	850	123

Plant	Size	L.I&S.R	P.R	T.D/ mm	RIM/ inch	O.D/ mm	S.W/ mm	S.L.R/ inch	Single/ kg	Dual/ kg	A.P/ Kpa	A.P/ Psi
VN	295/80R22.5	152/149L	18	22	9.00	1050	298	19.17	3550	3250	900	130



SDR1



TIRE FEATURES:

- Solid shoulder ribs offer superior driving stability and promote even wear.
- Aggressive tread block design improves block rigidity and offers excellent traction.
- Wide tread groove design effectively channels water for improved traction on wet roads.



RAR7-WB



TIRE FEATURES:

- Four belt structure offers superior shock and puncture resistance.
- Aggressive tread design provides excellent on and off-road traction.
- Main grooves enhance wet traction.
- Central groove nodules reduce stone retention.

Plant	Size	L.I&S.R	P.R	T.D/ mm	RIM/ inch	O.D/ mm	S.W/ mm	S.L.R/ inch	Single/ kg	Dual/ kg	A.P/ Kpa	A.P/ Psi
CN	11R22.5	144/142M	14	20	8.25	1065	279	19.33	2800	2650	720	105
CN	11R22.5	146/143M	16	20	8.25	1065	279	19.33	3000	2725	830	120
CN	11R22.5	148/145M	16	20	8.25	1065	279	19.33	3150	2900	850	123
CN	11R24.5	149/146L	16	20	8.25	1116	279	20.31	3250	3000	830	120
CN	295/75R22.5	144/141M	14	20	9	1020	298	18.66	2800	2575	760	110

Plant	Size	L.I&S.R	P.R	T.D/ mm	RIM/ inch	O.D/ mm	S.W/ mm	S.L.R/ inch	Single/ kg	Dual/ kg	A.P/ Kpa	A.P/ Psi
VN	385/55R22.5	160K	20	14.5	12.25	996	386	18.39	4500		900	130
VN	385/65R22.5	160K	20	15.5	11.75	1072	389	19.45	4500		900	130



RTR96



TIRE FEATURES:

- Tread and shoulder sipe designs reduce heat buildup and increase tire durability.
- Groove design improves highway performance and self cleaning capabilities.



SSR3



TIRE FEATURES:

- Tread block and rib sipes effectively reduce heat build-up and offer better grip on wet roads.
- Tread groove nodules reduce stone retention.
- Optimized tread profile improves ground contract pressure distribution to promote even tread wear.

Plant	Size	L.I.&S.R	P.R	T.D/ mm	RIM/ inch	O.D/ mm	S.W/ mm	S.L.R/ inch	Single/ kg	Dual/ kg	A.P/ Kpa	A.P/ Psi
CN	385/65R22.5	160K	20	15.5	11.75	1072	389	19.45	4500	-	900	130
CN	385/65R22.5	164K	24	15.5	11.75	1072	389	19.45	5000	-	900	130

Plant	Size	L.I.&S.R	P.R	T.D/ mm	RIM/ inch	O.D/ mm	S.W/ mm	S.L.R/ inch	Single/ kg	Dual/ kg	A.P/ Kpa	A.P/ Psi
CN	11R22.5	148/145M	16	14.5	8.25	1054	279	19.33	3150	2900	850	123

ON & OFF ROAD

Steer/All-position



Drive



Trailer





RAM1



TIRE FEATURES:

- Varying tread pitch promotes even tread wear and reduces noise emissions.
- Reinforced bead improves load bearing capabilities.
- Closed shoulder design improves driving stability and promotes even wear.
- Tread compound improves the tire's puncture and abrasion resistance.
- Tread groove design improves traction for more responsive braking and acceleration.

Plant	Size	L.I.&S.R	P.R	T.D/ mm	RIM/ inch	O.D/ mm	S.W/ mm	S.L.R/ inch	Single/ kg	Dual/ kg	A.P/ Kpa	A.P/ Psi
CN	7.00R16LT	118/114L	14	11.5	5.50F	775	200	14.25	1320	1180	770	112
CN	7.00R16LT	118/114N	14	11.5	5.50F	775	200	14.25	1320	1180	770	112
CN	7.50R16LT	122/118L	14	12.5	6.00G	805	215	14.76	1500	1320	770	112
CN	8.25R16LT	128/124L	16	14	6.50H	865	235	15.63	1800	1600	770	112
CN	8.25R20	139/137K	16	13	6.5	974	236	17.8	2430	2300	930	135
CN	9.00R20	141/139K	14	15	7.0	1019	259	18.54	2575	2430	790	115
CN	9.00R20	144/142K	16	15	7.0	1019	259	18.54	2800	2650	900	130
CN	10.00R20	149/146K	18	16	7.5	1054	278	19.13	3250	3000	930	135
CN	11.00R20	150/147K	16	16.5	8.0	1085	293	19.65	3350	3075	830	120
CN	11.00R20	152/149K	18	16.5	8.0	1085	293	19.65	3550	3250	930	135
VN	11R22.5	148/145M	16	16	8.25	1059	279	19.33	3150	2900	850	123
VN	11R24.5	149/146M	16	16	8.25	1110	279	20.31	3250	3000	850	123
CN	12.00R20	154/151K	18	17	8.5	1125	315	20.31	3750	3450	830	120
VN	12.00R24	160/157K	20	14	8.5	1238	315	22.52	4500	4125	900	130
CN	12R22.5	152/149K	18	17.5	9.00	1085	300	19.84	3550	3250	930	135
CN	13R22.5	156/150K	20	16	9.75	1124	320	20.51	4000	3350	900	130



RAM2



TIRE FEATURES:

- Groove angle and nodules reduce stone retention while also maximizing traction for on and off-road applications.
- Sidewall design better protects the tire casing.
- Shoulder grooves improve traction and improve heat dissipation.



RAM27



TIRE FEATURES:

- Tread block sipes are designed to improve overall wet performance.
- Optimized tread angle reduces rolling resistance for greater fuel economy.
- Main tread grooves effectively improve handling and traction performance.
- The central rib is equipped with rubber nodules that effectively reduce stone retention.

Plant	Size	L.I&S.R	P.R	T.D/ mm	RIM/ inch	O.D/ mm	S.W/ mm	S.L.R/ inch	Single/ kg	Dual/ kg	A.P/ Kpa	A.P/ Psi
CN	13R22.5	156/150L	18	17.5	9.75	1124	320	20.51	4000	3350	875	125
VN	255/70R22.5	140/137L	16	16	7.50	930	255	17.13	2500	2300	830	120
VN	275/70R22.5	148/145K	18	17	8.25	958	275	17.56	3150	2900	900	130
VN	315/80R22.5	157/154K	20	17	9.00	1076	312	19.69	4125	3750	900	130
VN	315/80R22.5	161/157G	20	17	9.00	1076	312	19.69	4625	4125	900	130

Plant	Size	L.I&S.R	P.R	T.D/ mm	RIM/ inch	O.D/ mm	S.W/ mm	S.L.R/ inch	Single/ kg	Dual/ kg	A.P/ Kpa	A.P/ Psi
CN	12.00R24	162/160K	22	16	8.5	1238	315	22.52	4750	4500	850	125



RAM61



TIRE FEATURES:

- Shallow shoulder grooves improve grip and wet skid resistance.
- Multi-layer shoulder design improves heat dissipation and durability.
- Tread compound improves cut and puncture resistance for greater adaptability between applications.
- Tire carcass design effectively promotes even shoulder wear.

Plant	Size	L.I&S.R	P.R	T.D/ mm	RIM/ inch	O.D/ mm	S.W/ mm	S.L.R/ inch	Single/ kg	Dual/ kg	A.P/ Kpa	A.P/ Psi
CN/VN	325/95R24	162/160K	22	15.5	9.00	1228	325	22.36	4750	4500	850	125



RAM80



TIRE FEATURES:

- Main groove design improves overall handling and wet traction.
- Tread pitch has been altered to reduce noise vibrations.
- Widened running surface improves traction and handling performance.
- Outer profiles design helps to promote even wear.

Plant	Size	L.I&S.R	P.R	T.D/ mm	RIM/ inch	O.D/ mm	S.W/ mm	S.L.R/ inch	Single/ kg	Dual/ kg	A.P/ Kpa	A.P/ Psi
CN	11R22.5	148/145L	16	17	8.25	1059	279	19.33	3150	2900	850	123



RAM86



TIRE FEATURES:

- The shoulder design promotes even wear.
- The reinforced belt design improves tread rigidity, wear resistance and impact resistance on non-paved roads.
- Main pattern design improves tire adaptability.

Plant	Size	L.I&S.R	P.R	T.D/ mm	RIM/ inch	O.D/ mm	S.W/ mm	S.L.R/ inch	Single/ kg	Dual/ kg	A.P/ Kpa	A.P/ Psi
CN	315/80R22.5	156/153K	20	16.5	9.00	1076	312	19.69	4000	3650	850	123



RAM89



TIRE FEATURES:

- Small sipes improve overall grip and traction on wet surfaces.
- Widened tread and special tread compound effectively improve wear resistance.
- Groove design reduces stone retention for greater safety.

Plant	Size	L.I&S.R	P.R	T.D/ mm	RIM/ inch	O.D/ mm	S.W/ mm	S.L.R/ inch	Single/ kg	Dual/ kg	A.P/ Kpa	A.P/ Psi
VN	10.00R20	149/146K	18	16.5	7.5	1054	278	19.13	3250	3000	930	135
CN	11R22.5	148/145L	16	16	8.25	1050	279	19.33	3150	2900	850	123



SAM1



TIRE FEATURES:

- Reinforced bead design improves load bearing capabilities.
- Closed shoulder design improves driving stability and promotes even wear.
- Varying tread pitch promotes even tread wear and reduces noise emissions.
- Tread compound and rigid design improve puncture and abrasion resistance.



SAM2



TIRE FEATURES:

- Chip-resistant tread compound makes the tire suitable for various mixed service applications.
- Tread pattern design effectively reduces stone retention and improves traction on both on and off-road applications.
- Improved sidewall design better protects the tire casing.
- Wide footprint and interlocking lug design offer greater driving stability and promote even wear.

Plant	Size	L.I&S.R	P.R	T.D/ mm	RIM/ inch	O.D/ mm	S.W/ mm	S.L.R/ inch	Single/ kg	Dual/ kg	A.P/ Kpa	A.P/ Psi
CN	11R22.5	148/145M	16	16	8.25	1065	279	19.33	3150	2900	850	123
CN	11R24.5	149/146L	16	16	8.25	1104	279	20.31	3250	3000	830	120
CN	9.00R20	144/142K	16	15	7.0	1019	259	18.54	2800	2650	900	130
CN	10.00R20	149/146K	18	16	7.5	1054	278	19.13	3250	3000	930	135

Plant	Size	L.I&S.R	P.R	T.D/ mm	RIM/ inch	O.D/ mm	S.W/ mm	S.L.R/ inch	Single/ kg	Dual/ kg	A.P/ Kpa	A.P/ Psi
CN	11.00R20	150/147K	16	16.5	8.0	1085	293	19.65	3350	3075	830	120
CN	11.00R20	152/149K	18	16.5	8.0	1085	293	19.65	3550	3250	930	135
CN	12.00R24	160/157K	20	16	8.5	1226	315	22.52	4500	4125	900	130
CN	315/80R22.5	157/154K	20	17	9.00	1076	312	19.69	4125	3750	900	130



SAM3



TIRE FEATURES:

- Varying tread pitch promotes even tread wear and reduces noise emissions.
- Reinforced carcass and tire bead extend tire service life.
- Tread groove nodules reduce stone retention.
- Tread and shoulder groove designs improve overall grip and driving stability.

Plant	Size	L.I&S.R	P.R	T.D/ mm	RIM/ inch	O.D/ mm	S.W/ mm	S.L.R/ inch	Single/ kg	Dual/ kg	A.P/ Kpa	A.P/ Psi
CN	10.00R20	147/143K	16	16	7.5	1054	278	19.13	3075	2725	800	116
CN	10.00R20	149/146K	18	16	7.50	1054	278	19.13	3250	3000	930	135
CN	11.00R20	150/147K	16	16	8.0	1085	293	19.65	3350	3075	830	120
CN	11.00R20	152/149K	18	16	8.0	1085	293	19.65	3550	3250	930	135
CN	12.00R20	154/151K	18	17	8.5	1125	315	20.31	3750	3450	830	120



RDM3



TIRE FEATURES:

- The deep tread grooves and sipes effectively improve overall traction.
- The groove rubber nodules and open shoulder design efficiently reduce stone retention as well as improve the tire's overall self-cleaning capabilities.

Plant	Size	L.I&S.R	P.R	T.D/ mm	RIM/ inch	O.D/ mm	S.W/ mm	S.L.R/ inch	Single/ kg	Dual/ kg	A.P/ Kpa	A.P/ Psi
VN	315/80R22.5	156/153K	20	20.5	9.00	1076	312	19.69	4000	3650	850	123



RDM19



TIRE FEATURES:

- Small block grooves reduce block stiffness and increase grip on wet road surfaces.
- Main groove design improves overall grip.
- Shoulder blocks are connected to ribs that help improve tear resistance and promote even wear.
- Wide running surface and deep tread effectively increase tread wear resistance and tire mileage.

Plant	Size	L.I&S.R	P.R	T.D/ mm	RIM/ inch	O.D/ mm	S.W/ mm	S.L.R/ inch	Single/ kg	Dual/ kg	A.P/ Kpa	A.P/ Psi
VN	12.00R24	160/157K	20	20	8.5	1238	315	22.52	4500	4125	900	130



RDM25



TIRE FEATURES:

- Wide running surface and tread groove design improve traction and grip.
- Deep grooves improve driving safety.
- Groove nodules effectively reduce stone retention.
- Strengthened structure design improves load bearing capacity.
- Open shoulder design and rubber compound effectively dissipate heat.

Plant	Size	L.I&S.R	P.R	T.D/ mm	RIM/ inch	O.D/ mm	S.W/ mm	S.L.R/ inch	Single/ kg	Dual/ kg	A.P/ Kpa	A.P/ Psi
CN	10.00R20	149/146K	18	18	7.5	1054	278	19.13	3250	3000	930	135
CN	11.00R20	150/147K	16	18.5	8.0	1085	293	19.65	3350	3075	830	120
CN	11.00R20	152/149K	18	18.5	8.0	1085	293	19.65	3550	3250	930	135
CN	12.00R20	154/151K	18	19.5	8.5	1125	315	20.31	3750	3450	830	120



SDR2



TIRE FEATURES:

- Strengthened carcass improves load-bearing capabilities.
- Tread sipe design reduces tread stiffness and increases grip on wet roads.
- The long tread grooves extending to the shoulder improve acceleration and braking performance for greater safety.
- Shoulder block design improves tear resistance and promotes even tread wear.

Plant	Size	L.I.&S.R	P.R	T.D/ mm	RIM/ inch	O.D/ mm	S.W/ mm	S.L.R/ inch	Single/ kg	Dual/ kg	A.P/ Kpa	A.P/ Psi
CN	11.00R20	150/147K	16	18	8.0	1096	293	19.65	3350	3075	830	120
CN	11.00R20	152/149K	18	18	8.0	1096	293	19.65	3550	3250	930	135



RDM68



TIRE FEATURES:

- Widened running surface and tread groove design improve traction and grip.
- Deep grooves improve driving safety.
- Groove nodules effectively reduce stone retention.
- Strengthened structure design improves load bearing capacity.
- Open shoulder design and rubber compound effectively dissipate heat.

Plant	Size	L.I.&S.R	P.R	T.D/ mm	RIM/ inch	O.D/ mm	S.W/ mm	S.L.R/ inch	Single/ kg	Dual/ kg	A.P/ Kpa	A.P/ Psi
VN	325/95R24	162/160K	22	20	9.00	1228	325	22.36	4750	4500	850	125



RAR8-WB



TIRE FEATURES:

- Four belt structure offers superior shock and puncture resistance.
- Aggressive tread design provides excellent on and off-road traction.
- Main groove design enhances wet traction.
- Central groove nodules reduce stone retention.

Plant	Size	L.I&S.R	P.R	T.D/ mm	RIM/ inch	O.D/ mm	S.W/ mm	S.L.R/ inch	Single/ kg	Dual/ kg	A.P/ Kpa	A.P/ Psi
VN	385/65R22.5	160K	20	16.5	11.75	1072	389	19.45	4500		900	130
CN	425/65R22.5	165K	20	17.5	12.25	1124	422	20.28	5150		830	120

OFF ROAD

Steer/All-position



RDM1 → 55



RDO28 → 56



RDM1



TIRE FEATURES:

- Aggressive multi-lug design and enhanced rubber compound improve cut and chunking resistance.
- Open shoulder design improves stability and promotes even wear.
- Deep tread grooves offer a longer tread life and exceptional fuel efficiency.

Plant	Size	L.I&S.R	P.R	T.D/ mm	RIM/ inch	O.D/ mm	S.W/ mm	S.L.R/ inch	Single/ kg	Dual/ kg	A.P/ Kpa	A.P/ Psi
CN/VN	11R22.5	148/145G	16	23.5	8.25	1065	279	19.33	3150	2900	850	123
VN	11R24.5	149/146G	16	23.5	8.25	1116	279	20.31	3250	3000	830	120



RDO28



TIRE FEATURES:

- Large tread blocks and deep grooves improve off-road traction and braking performance.
- Open shoulder design improves self-cleaning capabilities.
- Central connecting rib increases block rigidity and improves tear resistance.

Plant	Size	L.I&S.R	P.R	T.D/ mm	RIM/ inch	O.D/ mm	S.W/ mm	S.L.R/ inch	Single/ kg	Dual/ kg	A.P/ Kpa	A.P/ Psi
CN	11.00R20	150/147F	16	23.5	8.0	1096	293	19.65	3350	3075	830	120
CN	11.00R20	152/149F	18	23.5	8.0	1085	293	19.65	3550	3250	930	135
CN	12.00R20	154/151F	18	23.5	8.5	1125	315	20.31	3750	3450	830	120

ROVELO 

PASSENGER &
LIGHT TRUCK TIRE
CATALOG

REV 23.01

ROVELO 
TIRE

PASSENGER & LIGHT TRUCK TIRE CATALOG

HP / UHP / SUV / LT / 4S / WINTER TIRE



**TIRE
MAINTENANCE
AND SAFETY**

Tire maintenance can help to improve the performance and extend the life of your tires. More importantly, taking just a few minutes a month to inspect your tires can help you to avoid tire failures. Some of the key aspects of preventative maintenance include:

1. Inflation Pressure - It's important to maintain the correct inflation pressure in your tires as under-inflation or over-inflation may lead to a tire failure. The correct inflation pressure of your tires is specified by the vehicle manufacturer and is typically shown on the vehicle door ledge or in the owner's manual.

Tires may lose air over time due to the permeability of rubber so it is important to check your tire pressure regularly, at least once a month including the spare. Ensure to check the pressure when the tires are cold (i.e. have not been driven on).

2. Loading - Do not overload your vehicle. Overloading creates excessive stress leading to heat generation and can eventually lead to a tire failure. Please check the tire placard or vehicle owner's manual for the maximum recommended load for your vehicle.

SPEED RATING

The speed symbol indicates the maximum speed rating at which a tire can carry a load corresponding to its Load Index under specific service conditions.

** For tires with speed symbols W and Y, "ZR" may or may not appear within the size designation. For tires with a maximum speed above 186 MPH, a "ZR" must appear in the size designation.

Examples of similar size markings, with and without service descriptions, and showing different maximum speeds are shown.

Speed Rating	Max. Speed
F	80 km/h
G	90 km/h
J	100 km/h
K	110 km/h
L	120 km/h
M	130 km/h
N	140 km/h
P	150 km/h
Q	160 km/h

Speed Rating	Max. Speed
R	170 km/h
S	180 km/h
T	190 km/h
U	200 km/h
H	210 km/h
V	240 km/h
W	270 km/h
Y	300 km/h
ZR	>240 km/h

TABLE OF CONTENTS

PASSENGER

SUMMER	RHP-A68	4
	INSTINCT AS01	8
	RPX-988	12
	SPORT A1	16
	ROAD RACER R1	20
ALL SEASON	RHP-780	22
	RHP-780P	24
	ALL WEATHER R4S	26
WINTER	RWS-677 STUDDABLE	28
	RWT-768 STUDLESS	32

SUV/4X4

ON ROAD	ROAD QUEST H/T	34
	MONTARE HT RV08	36
4X4/OFF ROAD	ROAD QUEST AT	38
	RIDGETRAK AT	40
	ROAD QUEST RMT-810	42

VAN / COMMERCIAL

SUMMER	RCM-836	44
	RCM-X+	46
	MONTARE LT RL02	48

HIGH PERFORMANCE

ROVELO
TIRE



RHP-A68



Asymmetrical Tread Pattern

Provides excellent cornering stability while maintaining superior wet traction.



Tread Sipes

Drastically improve braking in all weather conditions.



Reinforced Shoulder Ribs

Engineered for high-speed cornering while extending tread life.

RIM	SIZE	PR	LI	SS	XL OR NOT	SIDEWALL	STANDARD RINM	UTQG	MAX LOAD (kg)	PRESSURE (kpa)	PLANT
12	155/70R12		73	T		BSW	4.50B	460/A/B	365	300	VN
13	165/60R13		73	H		BSW	5.00B	420/A/A	365	300	VN
13	155/65R13		73	T		BSW	4.50B	460/A/B	365	300	VN
13	155/70R13		75	T		BSW	4.50B	460/A/B	387	300	VN
13	165/70R13		79	T		BSW	5.00B	460/A/B	437	300	VN
13	175/70R13		82	T		BSW	5.00B	460/A/B	475	300	VN
13	185/70R13		86	T		BSW	5.50B	460/A/B	530	300	VN
14	165/55R14		72	V		BSW	5J	420/A/A	355	300	VN
14	165/60R14		75	H		BSW	5J	420/A/A	387	300	VN
14	185/60R14		82	H		BSW	5 1/2J	420/A/A	475	300	VN
14	165/65R14		79	T		BSW	5J	460/A/B	437	300	VN
14	175/65R14		82	H		BSW	5J	420/A/A	475	300	VN
14	185/65R14		86	H		BSW	5 1/2J	420/A/A	530	300	VN
14	195/65R14		89	H		BSW	6J	420/A/A	580	300	VN
14	165/70R14		81	T		BSW	5J	460/A/B	462	300	VN
14	175/70R14		84	T		BSW	5J	460/A/B	500	300	VN
14	185/70R14		88	H		BSW	5 1/2J	460/A/B	560	300	VN
14	195/70R14		91	H		BSW	6J	460/A/B	615	300	VN
14	205/70R14		95	T		BSW	6J	460/A/B	690	300	VN

HIGH PERFORMANCE

ROVELO
TIRE



RIM	SIZE	PR	LI	SS	XL OR NOT	SIDEWALL	STANDARD RINM	UTQG	MAX LOAD (kg)	PRESSURE (kpa)	PLANT
15	165/50R15		72	V		BSW	5J	420/A/A	355	300	VN
15	175/50R15		75	V		BSW	5 1/2J	420/A/A	387	300	VN
15	195/50R15		82	H		BSW	6J	420/A/A	475	300	VN
15	185/55R15		82	H		BSW	6J	420/A/A	475	300	VN
15	195/55R15		85	H		BSW	6J	420/A/A	515	300	VN
15	185/60R15		84	H		BSW	5 1/2J	420/A/A	500	300	VN
15	195/60R15		88	V		BSW	6J	420/A/A	560	300	VN
15	205/60R15		91	V		BSW	6J	420/A/A	615	300	VN
15	225/60R15		96	H		BSW	6 1/2J	420/A/A	710	300	VN
15	185/65R15		88	H		BSW	5 1/2J	420/A/A	560	300	VN
15	195/65R15		91	H		BSW	6J	420/A/A	615	300	VN
15	205/65R15		94	V		BSW	6J	420/A/A	670	300	VN
15	205/70R15		96	T		BSW	6J	460/A/B	710	300	VN
15	215/70R15		98	T		BSW	6 1/2J	460/A/B	750	300	VN

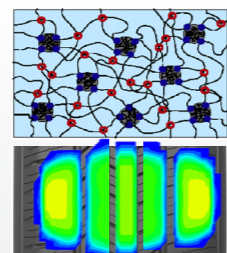
RIM	SIZE	PR	LI	SS	XL OR NOT	SIDEWALL	STANDARD RINM	UTQG	MAX LOAD (kg)	PRESSURE (kpa)	PLANT
16	195/50R16		84	V		BSW	6J	420/A/A	500	300	VN
16	195/55R16		87	H		BSW	6J	420/A/A	545	300	VN
16	205/55R16		91	V		BSW	6 1/2J	420/A/A	615	300	VN
16	205/60R16		96	V	XL	BSW	6J	420/A/A	710	340	VN
16	215/60R16		99	V	XL	BSW	6 1/2J	420/A/A	775	340	VN
16	225/60R16		98	H		BSW	6 1/2J	420/A/A	750	300	VN
16	205/65R16		95	H		BSW	6J	420/A/A	690	300	VN
16	215/65R16		98	T		BSW	6 1/2J	460/A/B	750	300	VN
17	215/50R17		95	V	XL	BSW	7J	420/A/A	690	340	VN
17	215/55R17		94	V		BSW	7J	420/A/A	670	300	VN
17	215/60R17		96	T		BSW	6 1/2J	460/A/B	710	300	VN
17	225/60R17		99	T		BSW	6 1/2J	460/A/B	775	300	VN
18	225/45ZR18		95	W	XL	BSW	7 1/2J	360/A/A	690	340	VN

HIGH PERFORMANCE

ROVELO
TIRE



INSTINCT AS01



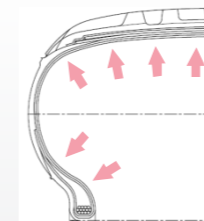
Long Mileage

The special all-weather tread compound is designed to offer exceptional wear and cut resistance while the upgraded tire contour and varying tread block angles are optimized to promote even wear. This combination of designs provides overall extended mileage.



Driving Comfort

Tread Variable pitch tread blocks are optimized with 5 variations and are equipped with sound-dampening sipes that improve handling and reduce noise emissions.



Handling Stability

The wide central ribs and improved contour design improve handling stability by evenly distributing ground pressure and increase the tire footprint.



All-Weather Performance

The tread rubber compound is durable and designed to perform in a full range of temperatures while tread sipes help to break through water film for improved braking performance.

HIGH PERFORMANCE

ROVELO
TIRE



RIM	SIZE	PR	LI	SS	XL OR NOT	SIDEWALL	STANDARD RINM	UTQG	MAX LOAD (kg)	PRESSURE (kpa)	PLANT
14	175/65R14		86	T	XL	BSW	5J	420/A/A	530	340	VN
14	185/65R14		86	H		BSW	5 1/2J	420/A/A	530	300	VN
14	175/70R14		84	T		BSW	5J	420/A/A	500	300	VN
14	195/70R14		91	T		BSW	6J	420/A/A	615	300	VN
15	175/55R15		77	H		BSW	5 1/2J	420/A/A	412	300	VN
15	185/55R15		82	V		BSW	6J	420/A/A	475	300	VN
15	185/60R15		88	H	XL	BSW	5 1/2J	420/A/A	560	340	VN
15	195/60R15		88	H		BSW	6J	420/A/A	560	300	VN
15	205/60R15		95	H	XL	BSW	6J	420/A/A	690	340	VN
15	175/65R15		84	H		BSW	5J	420/A/A	500	300	VN
15	185/65R15		92	H	XL	BSW	5 1/2J	420/A/A	630	340	VN
15	195/65R15		91	H		BSW	6J	420/A/A	615	300	VN
15	205/65R15		94	H		BSW	6J	420/A/A	670	300	VN
15	205/70R15		96	T		BSW	6J	420/A/A	710	300	VN
15	215/70R15		98	T		BSW	6 1/2J	420/A/A	750	300	VN
16	195/50R16		84	V		BSW	6J	420/A/A	500	300	VN
16	205/50R16		87	H		BSW	6 1/2J	420/A/A	545	300	VN
16	195/55R16		87	H		BSW	6J	420/A/A	545	300	VN
16	205/55R16		91	H		BSW	6 1/2J	420/A/A	615	300	VN
16	215/55R16		97	H	XL	BSW	7J	420/A/A	730	340	VN
16	205/60R16		92	H		BSW	6J	420/A/A	630	300	VN
16	215/60R16		95	H		BSW	6 1/2J	420/A/A	690	300	VN
16	225/60R16		98	H		BSW	6 1/2J	420/A/A	750	300	VN
16	235/60R16		100	V		BSW	7J	420/A/A	800	300	VN
16	205/65R16		95	H		BSW	6J	420/A/A	690	300	VN

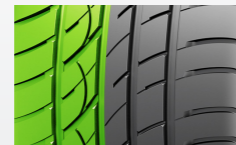
RIM	SIZE	PR	LI	SS	XL OR NOT	SIDEWALL	STANDARD RINM	UTQG	MAX LOAD (kg)	PRESSURE (kpa)	PLANT
16	215/65R16		98	T		BSW	6 1/2J	420/A/A	750	300	VN
16	225/65R16		100	H		BSW	6 1/2J	420/A/A	800	300	VN
16	235/65R16		103	T		BSW	7J	420/A/A	875	300	VN
17	215/45R17		87	W		BSW	7J	420/A/A	545	300	VN
17	225/45R17		91	V		BSW	7 1/2J	420/A/A	615	300	VN
17	235/45R17		97	W	XL	BSW	8J	420/A/A	730	340	VN
17	205/50R17		89	V		BSW	6 1/2J	420/A/A	580	300	VN
17	215/50R17		91	V		BSW	7J	420/A/A	615	300	VN
17	225/50R17		94	V		BSW	7J	420/A/A	670	300	VN
17	215/55R17		94	V		BSW	7J	420/A/A	670	300	VN
17	225/55R17		97	V		BSW	7J	420/A/A	730	300	VN
17	235/55R17		99	V		BSW	7 1/2J	420/A/A	775	300	VN
17	215/60R17		96	T		BSW	6 1/2J	420/A/A	710	300	VN
17	225/60R17		99	H		BSW	6 1/2J	420/A/A	775	300	VN
17	215/65R17		99	T		BSW	6 1/2J	420/A/A	775	300	VN
17	225/65R17		102	T		BSW	6 1/2J	420/A/A	850	300	VN
18	225/40R18		92	W	XL	BSW	8J	420/A/A	630	340	VN
18	245/40R18		97	W	XL	BSW	8 1/2J	420/A/A	730	340	VN
18	235/45R18		94	V		BSW	8J	420/A/A	670	300	VN
18	245/45R18		100	W	XL	BSW	8J	420/A/A	800	340	VN
18	225/50R18		95	H		BSW	7J	420/A/A	690	300	VN
18	235/50R18		97	V		BSW	7 1/2J	420/A/A	730	300	VN
18	235/55R18		100	V		BSW	7 1/2J	420/A/A	800	300	VN
18	235/60R18		103	H		BSW	7J	420/A/A	875	300	VN
19	235/55R19		105	V	XL	BSW	7 1/2J	420/A/A	925	340	VN

ULTRA HIGH PERFORMANCE

ROVELO
TIRE

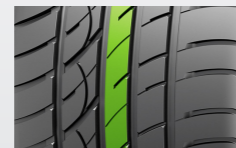


RPX-988



Asymmetrical Tread Pattern

Provides excellent cornering stability while maintaining superior wet traction.



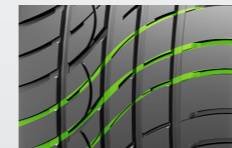
Multi-Dimensional Rib Sipes

Drastically improves braking in all weather conditions.



Reinforced Shoulder Ribs

Engineered for high-speed cornering while extending tread life.



Wavy Tread Sipes

Reduces vibrations for improved driving comfort.

ULTRA HIGH PERFORMANCE

ROVELO
TIRE

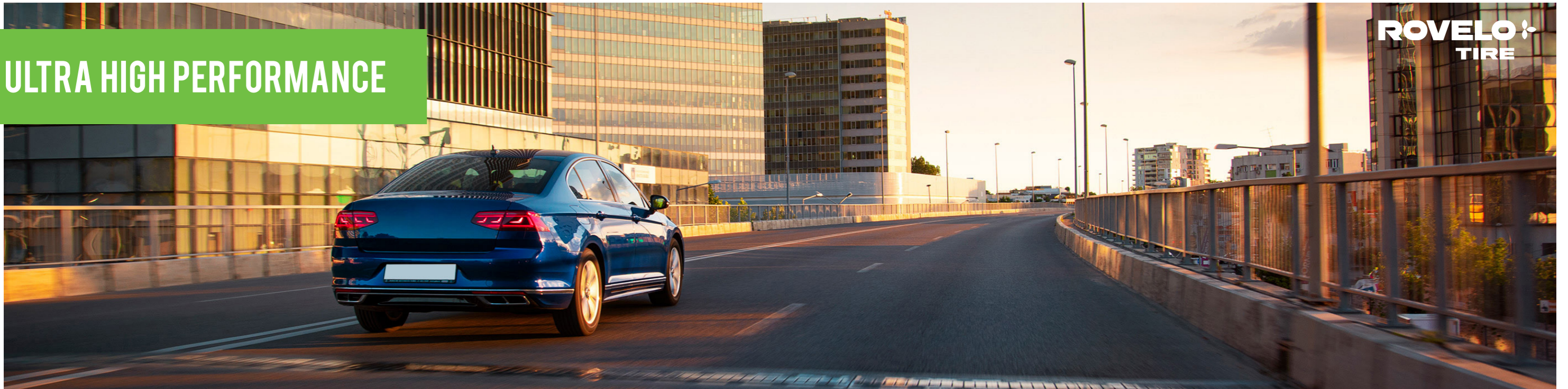


RIM	SIZE	PR	LI	SS	XL OR NOT	SIDEWALL	STANDARD RINM	UTQG	MAX LOAD (kg)	PRESSURE (kpa)	PLANT
15	195/45R15		78	V		BSW	6 1/2J	340/A/A	425	300	CN
16	195/45R16		84	V	XL	BSW	6 1/2J	340/A/A	500	340	CN
16	205/45R16		87	Y	XL	BSW	7J	340/A/A	545	340	CN
16	205/50ZR16		87	W		BSW	6 1/2J	340/A/A	545	300	CN
16	205/55ZR16		91	W		BSW	6 1/2J	340/A/A	615	300	CN
16	215/55ZR16		97	W	XL	BSW	7J	340/A/A	730	340	CN
16	225/55ZR16		99	W	XL	BSW	7J	340/A/A	775	340	CN
17	205/40ZR17		84	Y	XL	BSW	7 1/2J	340/A/A	500	340	CN
17	215/40ZR17		87	W	XL	BSW	7 1/2J	340/A/A	545	340	CN
17	215/40ZR17		87	Y	XL	BSW	7 1/2J	340/A/A	545	340	CN
17	245/40ZR17		95	Y	XL	BSW	8 1/2J	340/A/A	690	340	CN
17	205/45ZR17		88	Y	XL	BSW	7J	340/A/A	560	340	CN
17	215/45ZR17		91	W	XL	BSW	7J	340/A/A	615	340	CN
17	215/45ZR17		91	Y	XL	BSW	7J	340/A/A	615	340	CN
17	225/45ZR17		94	W	XL	BSW	7 1/2J	340/A/A	670	340	CN
17	225/45ZR17		94	Y	XL	BSW	7 1/2J	340/A/A	670	340	CN
17	235/45ZR17		97	W	XL	BSW	8J	340/A/A	730	340	CN
17	235/45ZR17		97	Y	XL	BSW	8J	340/A/A	730	340	CN
17	245/45ZR17		99	Y	XL	BSW	8J	340/A/A	775	340	CN
17	205/50ZR17		93	W	XL	BSW	6 1/2J	340/A/A	650	340	CN
17	215/50ZR17		95	W	XL	BSW	7J	340/A/A	690	340	CN
17	225/50ZR17		98	W	XL	BSW	7J	340/A/A	750	340	CN
17	215/55ZR17		98	W	XL	BSW	7J	340/A/A	750	340	CN
17	225/55R17		101	V	XL	BSW	7J	340/A/A	825	340	CN

RIM	SIZE	PR	LI	SS	XL OR NOT	SIDEWALL	STANDARD RINM	UTQG	MAX LOAD (kg)	PRESSURE (kpa)	PLANT
17	225/55ZR17		101	W	XL	BSW	7J	340/A/A	825	340	CN
17	235/55ZR17		99	W		BSW	7 1/2J	340/A/A	775	300	CN
18	215/35ZR18		84	Y	XL	BSW	7 1/2J	340/A/A	500	340	CN
18	255/35ZR18		94	W	XL	BSW	9J	340/A/A	670	340	CN
18	255/35ZR18		94	Y	XL	BSW	9J	340/A/A	670	340	CN
18	225/40ZR18		92	W	XL	BSW	8J	340/A/A	630	340	CN
18	225/40ZR18		92	Y	XL	BSW	8J	340/A/A	630	340	CN
18	235/40ZR18		95	W	XL	BSW	8 1/2J	340/A/A	690	340	CN
18	235/40ZR18		95	Y	XL	BSW	8 1/2J	340/A/A	690	340	CN
18	245/40ZR18		97	Y	XL	BSW	8 1/2J	340/A/A	730	340	CN
18	225/45ZR18		95	W	XL	BSW	7 1/2J	340/A/A	690	340	CN
18	225/45ZR18		95	Y	XL	BSW	7 1/2J	340/A/A	690	340	CN
18	245/45ZR18		100	W	XL	BSW	8J	340/A/A	800	340	CN
18	245/45ZR18		100	Y	XL	BSW	8J	340/A/A	800	340	CN
19	235/35ZR19		91	W	XL	BSW	8 1/2J	340/A/A	615	340	CN
19	235/35ZR19		91	Y	XL	BSW	8 1/2J	340/A/A	615	340	CN
19	255/35ZR19		96	Y	XL	BSW	9J	340/A/A	710	340	CN
19	245/40ZR19		98	W	XL	BSW	8 1/2J	340/A/A	750	340	CN
19	245/45ZR19		98	W		BSW	8J	340/A/A	750	300	CN
20	245/35ZR20		95	W	XL	BSW	8 1/2J	340/A/A	690	340	CN
20	245/35ZR20		95	Y	XL	BSW	8 1/2J	340/A/A	690	340	CN
20	255/35ZR20		97	W	XL	BSW	9J	340/A/A	730	340	CN
20	255/35ZR20		97	Y	XL	BSW	9J	340/A/A	730	340	CN
20	245/45ZR20		103	W	XL	BSW	8J	340/A/A	875	340	CN

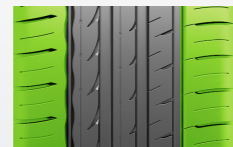
ULTRA HIGH PERFORMANCE

ROVELO
TIRE



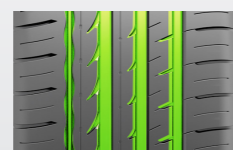
ULTRA HIGH PERFORMANCE TIRE

SPORT A1



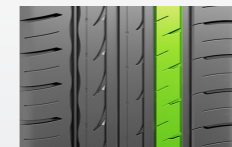
Asymmetrical Tread Pattern

Provides excellent cornering stability while maintaining superior wet traction.



Groove Design

Efficiently drains water for safer driving on wet roads.



Shoulder Groove Design

Wave-like design on the shoulder helps reduce noise emissions and increases cornering capabilities.

ULTRA HIGH PERFORMANCE

ROVELO
TIRE



RIM	SIZE	PR	LI	SS	XL OR NOT	SIDEWALL	STANDARD RINM	UTQG	MAX LOAD (kg)	PRESSURE (kpa)	PLANT
15	195/50R15		82	V		BSW	6J	340/A/A	475	300	VN
15	195/55R15		85	V		BSW	6J	340/A/A	515	300	VN
16	205/45ZR16		87	W	XL	BSW	7J	340/A/A	545	340	KH
16	195/50R16		88	V	XL	BSW	6J	340/A/A	560	340	VN
16	205/50R16		87	V		BSW	6 1/2J	340/A/A	545	300	KH
16	205/55R16		91	W		BSW	6 1/2J	340/A/A	615	300	KH
16	215/55ZR16		97	W	XL	BSW	7J	340/A/A	730	340	KH
17	205/40ZR17		84	W	XL	BSW	7 1/2J	340/A/A	500	340	KH
17	195/45R17		85	V	XL	BSW	6 1/2J	340/A/A	515	340	VN
17	205/45ZR17		88	W	XL	BSW	7J	340/A/A	560	340	KH
17	215/45ZR17		91	W	XL	BSW	7J	340/A/A	615	340	KH
17	225/45ZR17		94	W	XL	BSW	7 1/2J	340/A/A	670	340	KH
17	235/45ZR17		97	W	XL	BSW	8J	340/A/A	730	340	KH
17	245/45ZR17		99	W	XL	BSW	8J	340/A/A	775	340	KH
17	205/50ZR17		93	W	XL	BSW	6 1/2J	340/A/A	650	340	KH
17	215/50R17		95	V	XL	BSW	7J	340/A/A	690	340	KH
17	225/50ZR17		98	W	XL	BSW	7J	340/A/A	750	340	KH
17	235/50ZR17		96	W		BSW	7 1/2J	340/A/A	710	300	KH
17	215/55ZR17		98	W	XL	BSW	7J	340/A/A	750	340	KH
17	225/55R17		101	V	XL	BSW	7J	340/A/A			KH
17	225/55ZR17		101	W	XL	BSW	7J	340/A/A	825	340	KH
18	255/35ZR18		94	W	XL	BSW	9J	340/A/A	670	340	KH
18	265/35ZR18		97	Y	XL	BSW	9 1/2J	340/A/A	730	340	VN
18	215/40ZR18		89	W	XL	BSW	7 1/2J	340/A/A	580	340	VN
18	225/40ZR18		92	W	XL	BSW	8J	340/A/A	630	340	KH
18	235/40ZR18		95	W	XL	BSW	8 1/2J	340/A/A	690	340	KH
18	245/40ZR18		97	Y	XL	BSW	8 1/2J	340/A/A	730	340	KH
18	225/45ZR18		95	W	XL	BSW	7 1/2J	340/A/A	690	340	KH
18	245/45ZR18		100	W	XL	BSW	8J	340/A/A	800	340	KH
18	255/45ZR18		103	W	XL	BSW	8 1/2J	340/A/A	875	340	KH

RIM	SIZE	PR	LI	SS	XL OR NOT	SIDEWALL	STANDARD RINM	UTQG	MAX LOAD (kg)	PRESSURE (kpa)	PLANT
18	225/50ZR18		95	W		BSW	7J	340/A/A	690	300	VN/KH
18	235/50ZR18		97	W		BSW	7 1/2J	340/A/A	730	300	KH
18	245/50ZR18		104	Y	XL	BSW	7 1/2J	340/A/A	900	340	KH
19	265/30ZR19		93	Y	XL	BSW	9 1/2J	340/A/A	650	340	VN
19	275/30ZR19		96	Y	XL	BSW	9 1/2J	340/A/A	710	340	VN
19	235/35ZR19		91	W	XL	BSW	8 1/2J	340/A/A	615	340	KH
19	245/35ZR19		93	W	XL	BSW	8 1/2J	340/A/A	650	340	VN
19	255/35ZR19		96	W	XL	BSW	9J	340/A/A	710	340	KH
19	275/35ZR19		100	W	XL	BSW	9 1/2J	340/A/A	800	340	VN
19	225/40ZR19		93	Y	XL	BSW	8J	340/A/A	650	340	VN
19	235/40R19		96	V	XL	BSW	8 1/2J	340/A/A	710	340	KH
19	245/40ZR19		98	Y	XL	BSW	8 1/2J	340/A/A	750	340	KH
19	255/40R19		100	W	XL	BSW	9J	340/A/A	800	340	KH
19	275/40ZR19		105	Y	XL	BSW	9 1/2J	340/A/A	925	340	VN
19	245/45ZR19		98	W		BSW	8J	340/A/A	750	300	CN/KH
19	255/50R19		107	W	XL	BSW	8J	340/A/A	975	340	KH
20	225/30ZR20		85	Y	XL	BSW	8J	340/A/A	515	340	KH
20	245/30ZR20		90	W	XL	BSW	8 1/2J	340/A/A	600	340	VN
20	275/30ZR20		97	W	XL	BSW	9 1/2J	340/A/A	730	340	VN
20	225/35ZR20		90	W	XL	BSW	8J	340/A/A	600	340	KH
20	245/35ZR20		95	W	XL	BSW	8 1/2J	340/A/A	690	340	KH
20	255/35ZR20		97	W	XL	BSW	9J	340/A/A	730	340	KH
20	275/35ZR20		102	W	XL	BSW	9 1/2J	340/A/A	850	340	VN/KH
20	245/40ZR20		99	Y	XL	BSW	8 1/2J	340/A/A	775	340	VN
20	255/40ZR20		97	W		BSW	9J	340/A/A	730	300	VN/KH
20	245/45ZR20		103	W	XL	BSW	8J	340/A/A	875	340	KH
20	255/45ZR20		105	W	XL	BSW	8 1/2J	340/A/A	925	340	KH
20	275/45ZR20		110	W	XL	BSW	9J	340/A/A	1060	340	VN/KH
20	245/50ZR20		102	W		BSW	7 1/2J	340/A/A	850	300	VN/KH
22	245/30ZR22		92	W	XL	BSW	8 1/2J	340/A/A	630	340	VN

ULTRA HIGH PERFORMANCE

ROVELO
TIRE



ROAD RACER R1



RIM	SIZE	PR	LI	SS	XL OR NOT	SIDEWALL	STANDARD RINM	UTQG	MAX LOAD (kg)	PRESSURE (kpa)	PLANT
15	195/50R15		82	V		BSW	6J	180/AA/A	475	300	CN
15	195/55R15		89	V	XL	BSW	6J	180/AA/A	580	340	CN
17	215/45ZR17		91	W	XL	BSW	7J	180/AA/A	615	340	CN
18	265/35R18		97	W	XL	BSW	9 1/2J	180/AA/A	730	340	CN
18	225/40ZR18		92	W	XL	BSW	8J	180/AA/A	630	340	CN
18	235/40R18		95	W	XL	BSW	8 1/2J	180/AA/A	690	340	CN

Sport Aesthetics

High-end product with unique sidewall design; employs curved incisions which fully reflects its sporty and urban look.

High-Speed Performance

Wide tread and wave-like central rib design ensure greater high-speed stability.

Wet Grip

Sleek and wide shoulder grooves effectively drain water.

Cornering Performance

Big shoulder blocks improve stability and handling to meet performance needs.

Durability

Curved grooves improve abrasion resistance and the rounded corners on the tread block edges protects the tire from damage.

HIGH PERFORMANCE



RHP-780



Wet Performance

Four main grooves effectively drain water for improved traction on wet roads.



All-Season Performance

The tread design and compound evenly distribute ground pressure in all weather conditions to provide excellent driving performance.



Driving Comfort

Unique pattern design effectively reduces tire vibration and noise emissions for increased driving comfort.

RIM	SIZE	PR	LI	SS	XL OR NOT	SIDEWALL	STANDARD RINM	UTQG	MAX LOAD (kg)	PRESSURE (kpa)	PLANT
13	155/65R13		73	T		BSW	4.50B	360/A/A	365	300	CN
13	165/65R13		77	T		BSW	5.00B	360/A/A	412	300	CN
13	155/70R13		75	T		BSW	4.50B	360/A/A	387	300	CN
13	165/70R13		79	T		BSW	5.00B	360/A/A	437	300	CN
13	175/70R13		82	T		BSW	5.00B	360/A/A	475	300	CN
13	155/80R13		79	T		BSW	4.50B	360/A/A	437	300	CN
13	165/80R13		83	T		BSW	4.50B	360/A/A	487	300	CN
14	165/60R14		75	H		BSW	5J	360/A/A	387	300	CN
14	175/65R14		82	H		BSW	5J	360/A/A	475	300	CN
14	175/65R14		82	T		BSW	5J	360/A/A	475	300	CN
14	175/65R14		86	T	XL	BSW	5J	360/A/A	530	340	CN
14	165/70R14		81	T		BSW	5J	360/A/A	462	300	CN
14	175/70R14		84	T		BSW	5J	360/A/A	500	300	CN
14	185/70R14		88	H		BSW	5 1/2J	360/A/A	560	300	CN
14	195/70R14		91	H		BSW	6J	360/A/A	615	300	CN
14	195/70R14		91	T		BSW	6J	360/A/A	615	300	CN
15	205/70R15		96	T		BSW	6J	360/A/A	710	300	CN
16	215/60R16		95	V		BSW	6 1/2J	360/A/A	690	300	CN

HIGH PERFORMANCE

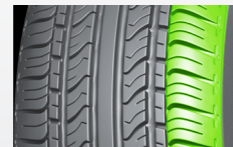


RHP-780P



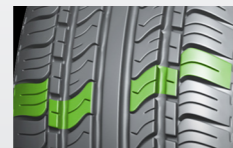
Hydroplaning Resistance

Optimal four channel grooves maximize hydroplaning resistance to ensure efficient drainage and greater safety on wet roads.



Stability

The specialized bead design ensures closer contact between the inflated tire and rim to improve driving safety.



Handling

The center rib and enhanced tread block design increases grip and operating stability for greater maneuverability and braking performance. Wet and dry grip is improved due to the wide tire-to-road contact area.

RIM	SIZE	PR	LI	SS	XL OR NOT	SIDEWALL	STANDARD RINM	UTQG	MAX LOAD (kg)	PRESSURE (kpa)	PLANT
14	185/55R14		80	V		BSW	6J	400/A/A	450	300	CN
14	185/60R14		82	H		BSW	5 1/2J	400/A/A	475	300	CN
14	155/65R14		75	T		BSW	4 1/2J	400/A/A	387	300	CN
14	165/65R14		79	T		BSW	5J	400/A/A	437	300	CN
14	185/65R14		86	H		BSW	5 1/2J	400/A/A	530	300	CN
14	195/65R14		89	H		BSW	6J	400/A/A	580	300	CN
15	195/50R15		82	H		BSW	6J	400/A/A	475	300	CN
15	195/50R15		82	V		BSW	6J	400/A/A	475	300	CN
15	185/55R15		82	H		BSW	6J	400/A/A	475	300	CN
15	185/55R15		82	V		BSW	6J	400/A/A	475	300	CN
15	195/55R15		85	V		BSW	6J	400/A/A	515	300	CN
15	185/60R15		84	H		BSW	5 1/2J	400/A/A	500	300	CN
15	185/60R15		88	H	XL	BSW	5 1/2J	400/A/A	560	340	CN
15	195/60R15		88	H		BSW	6J	400/A/A	560	300	CN
15	195/60R15		88	V		BSW	6J	400/A/A	560	300	CN
15	205/60R15		91	H		BSW	6J	400/A/A	615	300	CN
15	205/60R15		91	V		BSW	6J	400/A/A	615	300	CN
15	175/65R15		84	H		BSW	5J	400/A/A	500	300	CN
15	175/65R15		84	T		BSW	5J	400/A/A	500	300	CN
15	175/65R15		88	H	XL	BSW	5J	400/A/A	560	340	CN
15	185/65R15		88	H		BSW	5 1/2J	400/A/A	560	300	CN
15	185/65R15		88	T		BSW	5 1/2J	400/A/A	560	300	CN
15	185/65R15		92	T	XL	BSW	5 1/2J	400/A/A	630	340	CN
15	195/65R15		91	H		BSW	6J	400/A/A	615	300	CN
15	195/65R15		91	V		BSW	6J	400/A/A	615	300	CN
15	195/65R15		95	T	XL	BSW	6J	400/A/A	690	340	CN
15	205/65R15		94	V		BSW	6J	400/A/A	670	300	CN
16	195/50R16		88	V	XL	BSW	6J	400/A/A	560	340	CN
16	195/55R16		87	V		BSW	6J	400/A/A	545	300	CN
16	205/55R16		91	H		BSW	6 1/2J	400/A/A	615	300	CN
16	205/55R16		91	V		BSW	6 1/2J	400/A/A	615	300	CN
16	205/55R16		94	V	XL	BSW	6 1/2J	400/A/A	670	340	CN
16	205/60R16		92	H		BSW	6J	400/A/A	630	300	CN
16	205/60R16		92	V		BSW	6J	400/A/A	630	300	CN
16	205/60R16		96	V	XL	BSW	6J	400/A/A	710	340	CN
16	215/65R16		98	H		BSW	6 1/2J	400/A/A	750	300	CN

ALL SEASONS



ROVELO
TIRE

ALL WEATHER R4S



Safety

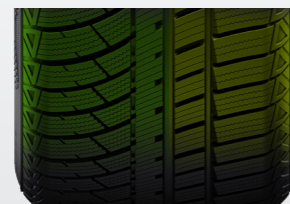
New sipe designs greatly improve grip and braking responsiveness.

Driving Comfort

Tread design is optimized for a comfortable drive year-round.

Overall Performance

New groove design pattern greatly improves handling and stability.



Inner Pattern

Improved handling in snow and rain.

Outer Pattern

Handling performance and stability in dry conditions.

RIM	SIZE	PR	LI	SS	XL OR NOT	SIDEWALL	STANDARD RINM	UTQG	MAX LOAD (kg)	PRESSURE (kpa)	PLANT
13	155/70R13		75	T		BSW	4.50B	300/A/A	387	300	CN
13	155/80R13		79	T		BSW	4.50B	300/A/A	437	300	CN
14	185/60R14		82	T		BSW	5 1/2J	300/A/A	475	300	CN
14	155/65R14		75	T		BSW	4 1/2J	300/A/A	387	300	CN
14	165/65R14		79	T		BSW	5J	300/A/A	437	300	CN
14	175/65R14		82	T		BSW	5J	300/A/A	475	300	CN
14	185/65R14		86	T		BSW	5 1/2J	300/A/A	530	300	CN
14	165/70R14		85	T	XL	BSW	5J	300/A/A	515	340	CN
14	175/70R14		88	T	XL	BSW	5J	300/A/A	560	340	CN
15	195/50R15		82	H		BSW	6J	300/A/A	475	300	CN
15	185/55R15		82	H		BSW	6J	300/A/A	475	300	CN
15	195/55R15		85	H		BSW	6J	300/A/A	515	300	CN
15	185/60R15		88	H	XL	BSW	5 1/2J	300/A/A	560	340	CN
15	195/60R15		88	H		BSW	6J	300/A/A	560	300	CN
15	175/65R15		84	H		BSW	5J	300/A/A	500	300	CN
15	185/65R15		88	H		BSW	5 1/2J	300/A/A	560	300	CN
15	195/65R15		91	H		BSW	6J	300/A/A	615	300	CN
16	205/45R16		87	V	XL	BSW	7J	300/A/A	545	340	CN
16	195/55R16		87	V		BSW	6J	300/A/A	545	300	CN
16	195/55R16		91	V	XL	BSW	6J		615	340	CN
16	205/55R16		94	V	XL	BSW	6 1/2J	300/A/A	670	340	CN
16	215/55R16		97	V	XL	BSW	7J	300/A/A	730	340	CN
16	205/60R16		96	V	XL	BSW	6J	300/A/A	710	340	CN
16	215/60R16		99	V	XL	BSW	6 1/2J	300/A/A	775	340	CN
17	225/45R17		94	V	XL	BSW	7 1/2J	300/A/A	670	340	CN
17	225/45R17		94	Y	XL	BSW	7 1/2J		670	340	CN
17	205/50R17		93	V	XL	BSW	6 1/2J	300/A/A	650	340	CN
17	225/50R17		98	V	XL	BSW	7J	300/A/A	750	340	CN
17	225/50R17		98	Y	XL	BSW	7J		750	340	CN
18	LT275/65R18	10PR	123/120	R		OWL	8J		1550/1400	550	CN

STUDDABLE WINTER

ROVELO
TIRE



RWS-677

RIM	SIZE	PR	LI	SS	XL OR NOT	SIDEWALL	STANDARD RINM	UTQG	MAX LOAD (kg)	PRESSURE (kpa)	PLANT
13	175/70R13		82	T		BSW	5.00B		475	300	CN
13	155/80R13		79	T		BSW	4.50B		437	300	CN
14	185/60R14		82	T		BSW	5 1/2J		475	300	CN
14	175/65R14		82	T		BSW	5J		475	300	CN
14	185/65R14		86	T		BSW	5 1/2J		530	300	CN
14	175/70R14		84	T		BSW	5J		500	300	CN
14	185/70R14		88	T		BSW	5 1/2J		560	300	CN



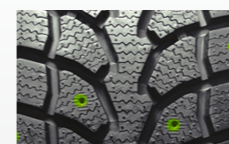
Winter Performance

The tread pattern is designed to improve traction on snow and ice while also reducing noise emissions.



Winter Safety

Tread grooves effectively channel slush, snow, and water out of the tire for improved traction and braking performance.



Winter Grip

The tire stud locations and quantity are optimized to provide effective grip in winter weather conditions.

STUDDABLE WINTER

ROVELO
TIRE



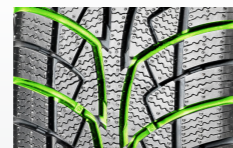
RIM	SIZE	PR	LI	SS	XL OR NOT	SIDEWALL	STANDARD RINM	UTQG	MAX LOAD (kg)	PRESSURE (kpa)	PLANT
15	185/55R15		82	T		BSW	6J		475	300	CN
15	185/60R15		84	T		BSW	5 1/2J		500	300	CN
15	195/60R15		88	T		BSW	6J		560	300	CN
15	175/65R15		84	T		BSW	5J		500	300	CN
15	185/65R15		88	T		BSW	5 1/2J		560	300	CN
15	195/65R15		91	T		BSW	6J		615	300	CN
15	205/65R15		94	T		BSW	6J		670	300	CN
15	205/70R15		96	T		BSW	6J		710	300	CN
15	215/70R15		98	T		BSW	6 1/2J		750	300	CN
15	235/75R15		105	S		BSW	6 1/2J		925	300	CN
16	205/55R16		91	T		BSW	6 1/2J		615	300	CN
16	215/55R16		97	H	XL	BSW	7J		730	340	CN
16	205/60R16		92	T		BSW	6J		630	300	CN
16	215/60R16		95	T		BSW	6 1/2J		690	300	CN
16	225/60R16		98	T		BSW	6 1/2J		750	300	CN
16	205/65R16		95	T		BSW	6J		690	300	CN
16	215/65R16		98	T		BSW	6 1/2J		750	300	CN
16	225/65R16		100	T		BSW	6 1/2J		800	300	CN
16	215/70R16		100	S		BSW	6 1/2J		800	300	CN
16	225/70R16		103	S		BSW	6 1/2J		875	300	CN
16	235/70R16		106	S		BSW	7J		950	300	CN
16	245/70R16		107	S		BSW	7J		975	300	CN
16	LT225/75R16	10PR	115/112	Q		BSW	6J		1215/1120	550	CN
16	245/75R16		111	S		BSW	7J		1090	300	CN
16	LT245/75R16	10PR	120/116	Q		BSW	7J		1380/1260	550	CN
17	215/45R17		91	T	XL	BSW	7J		615	340	CN
17	225/45R17		94	H	XL	BSW	7 1/2J		670	340	CN
17	215/50R17		95	T	XL	BSW	7J		690	340	CN
17	225/50R17		98	H	XL	BSW	7J		750	340	CN
17	215/55R17		94	T		BSW	7J		670	300	CN
17	225/55R17		97	T		BSW	7J		730	300	CN

RIM	SIZE	PR	LI	SS	XL OR NOT	SIDEWALL	STANDARD RINM	UTQG	MAX LOAD (kg)	PRESSURE (kpa)	PLANT
17	235/55R17		99	H		BSW	7 1/2J		775	300	CN
17	215/60R17		96	T		BSW	6 1/2J		710	300	CN
17	225/60R17		99	T		BSW	6 1/2J		775	300	CN
17	235/60R17		102	H		BSW	7J		850	300	CN
17	215/65R17		99	T		BSW	6 1/2J		775	300	CN
17	225/65R17		102	S		BSW	6 1/2J		850	300	CN
17	235/65R17		104	S		BSW	7J		900	300	CN
17	245/65R17		107	S		BSW	7J		975	300	CN
17	265/65R17		112	T		BSW	8J		1120	300	CN
17	245/70R17		110	S		BSW	7J		1060	300	CN
17	LT245/70R17	10PR	119/116	Q		BSW	7J		1360/1250	550	CN
17	265/70R17		115	S		BSW	8J		1215	300	CN
17	LT265/70R17	10PR	121/118	Q		BSW	8J		1450/1320	550	CN
17	LT245/75R17	10PR	121/118	R		BSW	7J		1450/1320	550	CN
18	225/40R18		92	H	XL	BSW	8J		630	340	CN
18	225/45R18		95	T	XL	BSW	7 1/2J		690	340	CN
18	225/55R18		98	T		BSW	7J		750	300	CN
18	235/55R18		100	H		BSW	7 1/2J		800	300	CN
18	255/55R18		105	H		BSW	8J		925	300	CN
18	225/60R18		100	T		BSW	6 1/2J		800	300	CN
18	235/60R18		107	T	XL	BSW	7J		975	340	CN
18	245/60R18		105	T		BSW	7J		925	300	CN
18	265/60R18		110	T		BSW	8J		1060	300	CN
18	235/65R18		106	T		BSW	7J		950	300	CN
18	275/65R18		116	S		BSW	8J		1250	300	CN
18	LT275/65R18	10PR	123/120	R		BSW	8J		1550/1400	550	CN
18	LT275/70R18	10PR	125/122	R		BSW	8J		1650/1500	550	CN
19	255/50R19		107	H	XL	BSW	8J		975	340	CN
19	235/55R19		101	H		BSW	7 1/2J		825	300	CN
20	275/40R20		106	H	XL	BSW	9 1/2J		950	340	CN
20	275/55R20		117	S	XL	BSW	8 1/2J		1285	340	CN

STUDLESS WINTER

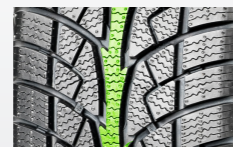


RWT-768



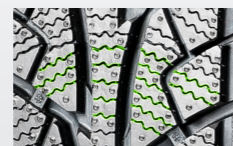
Winter Safety

Multi-angle tread and shoulder grooves divert slush and snow out of the tire for improved overall handling and safety.



Improved Ground Contact

The zigzag center rib improves the tire's ground contact area allowing for better braking performance.



Winter Grip

The high-density of angled sipes are designed to provide maximum traction during acceleration, braking, and turning.

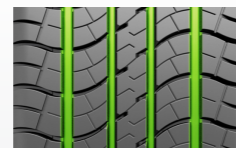
RIM	SIZE	PR	LI	SS	XL OR NOT	SIDEWALL	STANDARD RINM	UTQG	MAX LOAD (kg)	PRESSURE (kpa)	PLANT
13	155/70R13		75	T		BSW	4.50B		387	300	CN
13	165/70R13		79	T		BSW	5.00B		437	300	CN
13	165/70R13		83	T	XL	BSW	5.00B		487	340	CN
13	175/70R13		82	T		BSW	5.00B		475	300	CN
13	155/80R13		79	T		BSW	4.50B		437	300	CN
14	185/60R14		82	T		BSW	5 1/2J		475	300	CN
14	155/65R14		75	T		BSW	4 1/2J		387	300	CN
14	175/65R14		82	T		BSW	5J		475	300	CN
14	185/65R14		86	T		BSW	5 1/2J		530	300	CN
14	165/70R14		81	T		BSW	5J		462	300	CN
14	175/70R14		84	T		BSW	5J		500	300	CN
15	185/55R15		82	H		BSW	6J		475	300	CN
15	195/55R15		85	H		BSW	6J		515	300	CN
15	185/60R15		84	T		BSW	5 1/2J		500	300	CN
15	185/60R15		88	T	XL	BSW	5 1/2J		560	340	CN
15	195/60R15		88	H		BSW	6J		560	300	CN
15	175/65R15		84	T		BSW	5J		500	300	CN
15	185/65R15		88	T		BSW	5 1/2J		560	300	CN
15	195/65R15		91	T		BSW	6J		615	300	CN
15	195/65R15		95	T	XL	BSW	6J		690	340	CN
15	205/65R15		94	T		BSW	6J		670	300	CN
16	195/55R16		87	H		BSW	6J		545	300	CN
16	205/55R16		91	H		BSW	6 1/2J		615	300	CN
16	205/55R16		91	T		BSW	6 1/2J		615	300	CN
16	205/55R16		94	H	XL	BSW	6 1/2J		670	340	CN
16	215/55R16		93	H		BSW	7J		650	300	CN
16	225/55R16		99	H	XL	BSW	7J		775	340	CN
16	205/60R16		92	H		BSW	6J		630	300	CN
16	205/60R16		96	H	XL	BSW	6J		710	340	CN
16	215/60R16		95	H		BSW	6 1/2J		690	300	CN
16	225/60R16		98	H		BSW	6 1/2J		750	300	CN
16	215/65R16		98	H		BSW	6 1/2J		750	300	CN
17	225/45R17		94	H	XL	BSW	7 1/2J		670	340	CN
17	225/50R17		98	H	XL	BSW	7J		750	340	CN
17	225/55R17		97	H		BSW	7J		730	300	CN

ON ROAD SUV



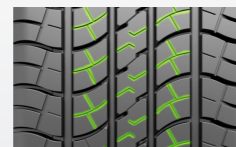
RIM	SIZE	PR	LI	SS	XL OR NOT	SIDEWALL	STANDARD RINM	UTQG	MAX LOAD (kg)	PRESSURE (kpa)	PLANT
15	205/70R15		96	H		BSW	6J	440/A/A	710	300	CN
15	235/75R15		105	T		OWL	6 1/2J	500/A/B	925	300	CN
16	235/60R16		100	H		BSW	7J	440/A/A	800	300	CN
16	215/65R16		102	H	XL	BSW	6 1/2J	440/A/A	850	340	CN
16	215/70R16		100	H		BSW	6 1/2J	500/A/B	800	300	CN
16	225/70R16		103	T		OWL	6 1/2J	500/A/B	875	300	CN
16	235/70R16		106	H		BSW	7J	500/A/B	950	300	CN
16	235/70R16		106	T		OWL	7J	500/A/B	950	300	CN
16	245/70R16		111	H	XL	BSW	7J	500/A/B	1090	340	CN
16	245/70R16		111	T	XL	OWL	7J	500/A/B	1090	340	CN
16	255/70R16		111	T		OWL	7 1/2J	500/A/B	1090	300	CN
16	265/70R16		112	T		OWL	8J	500/A/B	1120	300	CN
16	245/75R16		111	T		OWL	7J	500/A/B	1090	300	CN
16	265/75R16		116	T		OWL	7 1/2J	500/A/B	1250	300	CN
17	235/55R17		99	V		BSW	7 1/2J	420/A/A	775	300	CN
17	215/60R17		96	H		BSW	6 1/2J	440/A/A	710	300	CN
17	225/60R17		99	H		BSW	6 1/2J	440/A/A	775	300	CN
17	225/65R17		102	H		BSW	6 1/2J	500/A/B	850	300	CN
17	235/65R17		108	H	XL	BSW	7J	500/A/B	1000	340	CN
17	245/65R17		111	T	XL	OWL	7J	500/A/B	1090	340	CN
17	265/65R17		112	T		BSW	8J	500/A/B	1120	300	CN
17	245/70R17		110	T		OWL	7J	500/A/A	1060	300	CN
17	265/70R17		115	T		OWL	8J	500/A/B	1215	300	CN
18	225/55R18		98	V		BSW	7J	420/A/A	750	300	CN
18	235/55R18		100	V		BSW	7 1/2J	420/A/A	800	300	CN
18	255/55R18		109	Y	XL	BSW	8J	420/A/A	1030	340	CN
18	235/60R18		103	V		BSW	7J	420/A/A	875	300	CN
18	245/60R18		105	H		BSW	7J	500/A/A	925	300	CN
18	265/60R18		110	T		BSW	8J	500/A/A	1060	300	CN
18	255/65R18		111	T		BSW	7 1/2J	500/A/B	1090	300	CN
18	265/65R18		114	T		BSW	8J	500/A/B	1180	300	CN
18	275/65R18		116	T		OWL	8J	500/A/B	1250	300	CN
18	255/70R18		113	T		BSW	7 1/2J	500/A/B	1150	300	CN
19	255/50R19		107	V	XL	BSW	8J	420/A/A	975	340	CN
20	265/50R20		107	V		BSW	8 1/2J	420/A/A	975	300	CN
20	275/55R20		117	T	XL	BSW	8 1/2J	500/A/B	1285	340	CN
20	275/60R20		115	T		OWL	8J	500/A/B	1215	300	CN

ROAD QUEST HT



Main Groove Design

The main grooves are designed to efficiently expel water and reduce rolling resistance, thus offering greater fuel economy, high-speed stability, and wet traction.



Greater Comfort

Fine sipe design increases driving comfort on asphalt and concrete roads.



Open Shoulder Design

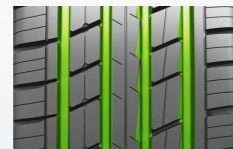
Improves stability and traction when cornering on wet and dry roads.

ON ROAD SUV



ROVELO
TIRE

MONTARE HT RV08



Handling

The main channel groove design improves grip and driving stability for greater maneuverability and braking performance on various road conditions.



Comfort

Unique pattern design ensures good vibration and noise absorption to increase driving comfort.

RIM	SIZE	PR	LI	SS	XL OR NOT	SIDEWALL	STANDARD RINM	UTQG	MAX LOAD (kg)	PRESSURE (kpa)	PLANT
15	215/75R15		100	S		BSW	6J	460/A/A	800	300	CN
15	235/75R15		105	T		BSW	6 1/2J	460/A/A	925	300	CN
16	235/70R16		106	H		BSW	7J	460/A/A	950	300	CN
17	235/55R17		103	V	XL	BSW	7 1/2J	600/A/A	875	340	CN
17	215/60R17		96	H		BSW	6 1/2J	460/A/A	710	300	CN
17	225/60R17		99	H		BSW	6 1/2J	460/A/A	775	300	CN
17	255/60R17		106	H		BSW	7 1/2J	600/A/A	950	300	CN
17	225/65R17		102	H		BSW	6 1/2J	460/A/A	850	300	CN
17	235/65R17		108	H	XL	BSW	7J	460/A/A	1000	340	CN
18	235/50R18		97	V		BSW	7 1/2J	600/A/A	730	300	CN
18	235/50RF18		97	V		BSW	7 1/2J	600/A/A	730	300	CN
18	215/55R18		95	V		BSW	7J	600/A/A	690	300	CN
18	225/55R18		102	W	XL	BSW	7J	600/A/A	850	340	CN
18	235/55R18		104	W	XL	BSW	7 1/2J	600/A/A	900	340	CN
18	255/55R18		109	V	XL	BSW	8J	600/A/A	1030	340	CN
18	255/55RF18		105	H		BSW	8J	600/A/A	925	300	CN
18	225/60R18		100	H		BSW	6 1/2J	600/A/A	800	300	CN
18	235/60R18		103	V		BSW	7J	460/A/A	875	300	CN
19	235/50R19		103	W	XL	BSW	7 1/2J	600/A/A	875	340	CN
19	255/50R19		103	V		BSW	8J	600/A/A	875	300	CN
19	255/50RF19		103	V		BSW	8J	600/A/A	875	300	CN
19	235/55R19		101	W		BSW	7 1/2J	600/A/A	825	300	CN
19	245/55R19		103	V		BSW	7 1/2J	600/A/A	875	300	CN

ON/OFF ROAD PICKUP & SUV



RIM	SIZE	PR	LI	SS	XL OR NOT	SIDEWALL	STANDARD RINM	UTQG	MAX LOAD (kg)	PRESSURE (kpa)	PLANT
15	31x10.50R15LT	6PR	109	S		OWL	8 1/2J		1030	350	VN
16	245/70R16		107	S		OWL	7J	500/A/B	975	300	VN
16	265/70R16		112	T		OWL	8J	500/A/B	1120	300	VN
17	265/65R17		112	S		OWL	8J	500/A/B	1120	300	VN
18	265/60R18		110	T		RWL	8J	500/A/B	1060	300	VN
18	265/60R18		110	T		BSW	8J	500/A/B	1060	300	VN
20	265/50R20		111	T	XL	RWL	8 1/2J	500/A/B	1090	340	VN
20	265/50R20		111	T	XL	BSW	8 1/2J	500/A/B	1090	340	VN
20	275/55R20		117	T	XL	RWL	8 1/2J	500/A/B	1285	340	VN
20	275/55R20		117	T	XL	BSW	8 1/2J	500/A/B	1285	340	VN

ROAD QUEST AT



Strong Sidewall

Wide running surface ensures superior traction performance on all types of road surfaces.



1 Shoulder Design

Wide shoulder grooves and nodules within the tread grooves effectively eject mud, sand, gravel, and other debris to improve grip.

2 Climbing Performance

Tread blocks maintain a staggered bite to improve traction and climbing ability.

3 Traction Performance

Lengthened tread shoulder employs a multi-layered protruding design that improves strength and prevents damage to the carcass, allowing for a safe off-roading experience.

ON/OFF ROAD PICKUP & SUV



RIM	SIZE	PR	LI	SS	XL OR NOT	SIDEWALL	STANDARD RINM	UTQG	MAX LOAD (kg)	PRESSURE (kpa)	PLANT
15	235/75R15		109	S	XL	OWL	6 1/2J	500/A/B	1030	340	CN
15	LT235/75R15	6PR	104/101	R		OWL	6 1/2J		900/825	350	CN
15	30x9.50R15LT	6PR	104	S		OWL	7 1/2J		900	350	CN
15	31x10.50R15LT	6PR	109	S		OWL	8 1/2J		1030	350	CN
16	235/70R16		106	S		OWL	7J	500/A/B	950	300	CN
16	255/70R16		111	T		OWL	7 1/2J	500/A/A	1090	300	CN
16	265/70R16		112	T		OWL	8J	500/A/B	1120	300	CN
16	LT225/75R16	10PR	115/112	R		BSW	6J		1215/1120	550	CN
16	245/75R16		111	S		OWL	7J	500/A/B	1090	300	CN
16	LT245/75R16	10PR	120/116	S		OWL	7J		1380/1260	550	CN
16	265/75R16		116	S		OWL	7 1/2J	500/A/B	1250	300	CN
16	LT265/75R16	10PR	123/120	S		OWL	7 1/2J		1550/1400	550	CN
16	LT285/75R16	10PR	126/123	R		OWL	8J		1700/1550	550	CN
16	LT235/85R16	10PR	120/116	R		BSW	6 1/2J		1380/1260	550	CN
17	235/65R17		104	S		OWL	7J	500/A/B	900	300	CN
17	245/65R17		107	S		OWL	7J	500/A/B	975	300	CN
17	265/65R17		112	S		OWL	8J	500/A/B	1120	300	CN
17	285/65R17		116	T		OWL	8 1/2J		1250	300	CN
17	245/70R17		110	T		OWL	7J	500/A/B	1060	300	CN
17	LT245/70R17	10PR	119/116	S		OWL	7J		1360/1250	550	CN
17	265/70R17		115	S		OWL	8J	500/A/B	1215	300	CN
17	LT265/70R17	10PR	121/118	S		OWL	8J		1450/1320	550	CN
17	LT285/70R17	10PR	121/118	R		OWL	8 1/2J		1450/1320	550	CN
17	LT245/75R17	10PR	121/118	S		OWL	7J		1450/1320	550	CN
17	LT235/80R17	10PR	120/117	R		OWL	6 1/2J		1400/1285	550	CN
18	235/60R18		107	T	XL	BSW	7J	500/A/A	975	340	CN
18	LT285/60R18	8PR	118/115	S		OWL	8 1/2J		1320/1215	450	CN
18	265/65R18		114	T		OWL	8J	500/A/B	1180	300	CN
18	275/65R18		116	T		OWL	8J	500/A/B	1250	300	CN
18	LT275/65R18	10PR	123/120	R		OWL	8J		1550/1400	550	CN
18	LT265/70R18	10PR	124/121	R		BSW	8J		1600/1450	550	CN
18	LT275/70R18	10PR	125/122	R		OWL	8J		1650/1500	550	CN
19	255/55R19		111	H	XL	BSW	8J	500/A/A	1090	340	CN
20	265/50R20		111	T	XL	OWL	8 1/2J	500/A/B	1090	340	CN
20	275/55R20		117	T	XL	BSW	8 1/2J	500/A/B	1285	340	CN
20	LT275/55R20	10PR	120/117	S		OWL	8 1/2J		1400/1285	550	CN
20	LT305/55R20	10PR	121/118	R		BSW	9 1/2J		1450/1320	450	CN
20	LT265/60R20	10PR	121/118	R		BSW	8J		1450/1320	550	CN
20	275/60R20		115	T		BSW	8J	500/A/B	1215	300	CN
20	LT275/60R20	10PR	123/120	R		BSW	8J		1550/1400	550	CN
20	LT325/60R20	10PR	126/123	R		OWL	9 1/2J		1700/1550	450	CN
20	LT275/65R20	10PR	126/123	R		BSW	8J		1700/1550	550	CN

RIDGETRAK AT



The NEW RIDGETRAK AT 3PMS is designed to deliver superior traction for SUVs, pickups and vans both off and on the road. The NEW RIDGETRAK AT 3PMS provides the same exceptional handling, on-and-off-road stability and quiet, comfortable ride as the original RIDGETRAK AT with the added bonus that it is winter tire tested and approved!



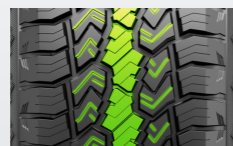
Versatile Applications

The aggressive open shoulder design efficiently expels snow, water, slush, and mud for optimum traction on all-terrain conditions.



Grip and Traction

The serrated tread block design provides excellent grip and traction on various road conditions.



Comfort

Solid center rib and read block sipes offer greater handling and comfort.

ON/OFF ROAD PICKUP & SUV



RIM	SIZE	PR	LI	SS	XL OR NOT	SIDEWALL	STANDARD RIMM	UTQG	MAX LOAD (kg)	PRESSURE (kpa)	PLANT
15	31×10.50R15LT	6PR	109	Q		OWL	8 1/2J		1030	350	CN
16	LT265/70R16	10PR	121/118	Q		OWL	8J		1450/1320	550	CN
16	LT245/75R16	10PR	120/116	Q		OWL	7J		1380/1260	550	CN
16	LT265/75R16	10PR	123/120	Q		OWL	7 1/2J		1550/1400	550	CN
17	LT265/65R17	10PR	120/117	Q		OWL	8J		1400/1285	550	CN
18	LT265/65R18	8PR	117/114	Q		OWL	8J		1285/1180	450	CN

ROAD QUEST RMT810



Off-Road Performance

The z-shaped grooves between blocks is designed to enhance off-road driving capabilities by improving grip and climbing ability.



Off-Road Grip

Deep grooves allows mud to easily be discharged from the tread at both high and low speeds. The design also offers better grip when traveling on rocky or rugged roads.



Off-Road Stability

Large blocks on the shoulder vastly enhance handling on muddy and rocky roads.

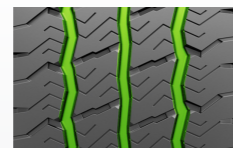


Off-Road Durability

The shield pattern which extends from the sidewall protects the sidewall from abrasions and increase traction in mud. The carcass is designed with three layers of polyester fabric to make it rugged and resistant to strong impacts.



RCM-836



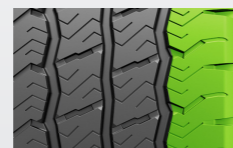
Three Channel Zigzag Grooves
Maximizes traction and water drainage in wet conditions.



Multi-Angle Sipe System
Sipes provide superior traction in snow and mud.



Full-Depth Acoustic Channels
Reduces vibrations to maximize passenger comfort.



Extra Wide Shoulders
Minimizes irregular wear and improves high-speed stability.

RIM	SIZE	PR	LI	SS	XL OR NOT	SIDEWALL	STANDARD RINM	UTQG	MAX LOAD (kg)	PRESSURE (kpa)	PLANT
14	175/65R14C	6PR	90/88	T		BSW	5J		600/560	375	CN
14	165/70R14C	6PR	89/87	T		BSW	5J		580/545	375	CN
15	205/65R15C	6PR	102/100	T		BSW	6J		850/800	375	CN
15	195/70R15C	8PR	104/102	R		BSW	6J		900/850	450	CN
15	195/70R15C	8PR	104/102	T		BSW	6J		900/850	450	CN
15	205/70R15C	8PR	106/104	R		BSW	6J		950/900	450	CN
15	205/70R15C	8PR	106/104	T		BSW	6J		950/900	450	CN
15	215/70R15C	8PR	109/107	R		BSW	6 1/2J		1030/975	450	CN
15	215/70R15C	8PR	109/107	T		BSW	6 1/2J		1030/975	450	CN
15	225/70R15C	8PR	112/110	R		BSW	6 1/2J		1120/1060	450	CN
15	225/70R15C	8PR	112/110	T		BSW	6 1/2J		1120/1060	450	CN
16	195/60R16C	6PR	99/97	H		BSW	6J		775/730	375	CN
16	195/65R16C	8PR	104/102	T		BSW	6J		900/850	475	CN
16	205/65R16C	8PR	107/105	T		BSW	6J		975/925	475	CN
16	215/65R16C	8PR	109/107	R		BSW	6 1/2J		1030/975	475	CN
16	215/65R16C	8PR	109/107	T		BSW	6 1/2J		1030/975	475	CN
16	225/65R16C	8PR	112/110	R		BSW	6 1/2J		1120/1060	475	CN
16	225/65R16C	8PR	112/110	T		BSW	6 1/2J		1120/1060	475	CN
16	235/65R16C	8PR	115/113	T		BSW	7J		1215/1150	475	CN
16	215/70R16C	6PR	108/106	T		BSW	6 1/2J		1000/950	375	CN
16	195/75R16C	8PR	107/105	Q		BSW	5 1/2J		975/925	475	CN
16	195/75R16C	8PR	107/105	T		BSW	5 1/2J		975/925	475	CN
16	205/75R16C	8PR	110/108	R		BSW	5 1/2J		1060/1000	475	CN
16	205/75R16C	8PR	110/108	T		BSW	5 1/2J		1060/1000	475	CN
16	215/75R16C	8PR	113/111	R		BSW	6J		1150/1090	475	CN
16	215/75R16C	8PR	113/111	T		BSW	6J		1150/1090	475	CN

COMMERCIAL

ROVELO
TIRE



RCM-X+



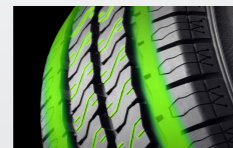
Closed Shoulder Design

Enhances handling performance and promotes even wear.



Improved Handling and Lifetime

The closed shoulder design helps to improve overall handling and promote even wear for a longer tread life.



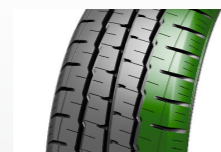
Wet Performance

The sipe design is optimized to improve handling and traction in wet weather conditions for greater overall safety.

RIM	SIZE	PR	LI	SS	XL OR NOT	SIDEWALL	STANDARD RINM	UTQG	MAX LOAD (kg)	PRESSURE (kpa)	PLANT
12	155R12C	8PR	88/86	N		BSW	4.50B		560/530	450	VN
13	155R13C	8PR	90/88	N		BSW	4 1/2J		600/560	450	VN
13	165R13C	8PR	94/93	P		BSW	4 1/2J		670/650	450	VN
14	185R14C	8PR	102/100	Q		BSW	5 1/2J		850/800	450	CN/VN
14	195R14C	8PR	106/104	Q		BSW	5 1/2J		950/900	450	CN/VN
15	195/70R15C	8PR	104/102	R		BSW	6J		900/850	450	VN
15	225/70R15C	8PR	112/110	R		BSW	6 1/2J		1120/1060	450	VN
15	195/80R15C	8PR	108/106	S		BSW	5 1/2J		1000/950	475	CN
15	195R15C	8PR	106/104	S		BSW	5 1/2J		950/900	450	CN/VN
16	195/75R16C	10PR	110/108	Q		BSW	5 1/2J		1060/1000	525	VN
16	215/75R16C	10PR	116/114	R		BSW	6J		1250/1180	525	VN



MONTARE LT RL02



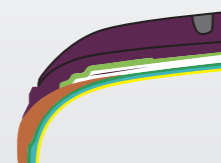
Extended Tire Life

The closed shoulder design combined with a wear resistant tread compound effectively improve handling performance and improve wear resistance for a longer tread life.



Wet Grip

The varied central and outer groove designs effectively expel water for better traction on wet roads.



Safety and Durability

The strengthened nylon caps and sturdy belt layers effectively improve safety and durability in extreme driving applications.

RIM	SIZE	PR	LI	SS	XL OR NOT	SIDEWALL	STANDARD RINM	UTQG	MAX LOAD (kg)	PRESSURE (kpa)	PLANT
14	165R14C	8PR	96/95	S		BSW	4 1/2J		710/690	450	CN

ROVELO 
TIRE

PASSENGER & LIGHT TRUCK TIRE CATALOG

HP / UHP / SUV / LT / 4S / WINTER TIRE

ROVELO 

PASSENGER &
LIGHT TRUCK TIRE
CATALOG

REV 22.01

